



CBD6DC HOMELINE[®]

User manual

Contents

Preface	3
Valid for	4
Important information	5
Safety instructions	5
Safety issues.....	6
Before installation, reinstallation or troubleshooting.....	6
Before start-up.....	6
During operation.....	6
Misc.....	6
Only for EU markets	7
Only for Non EU markets	7
Misuse	7
Informations importantes	8
Consignes de sécurité	8
Avant l'installation, ré-installation ou le dépannage.....	9
Avant de démarrage.....	9
Pendant le fonctionnement.....	9
Divers.....	9
Seulement pour les marchés au sein de l'UE	10
Seulement pour les marchés hors UE	10
Utilisation abusive	10
Repairs	11
Misc. on the CBD6DC HOMELINE	12
Description of the CBD6DC HOMELINE	12
Installation	13
Mounting the CBD6DC on the TD4/TD5 Advanced.....	13
Mounting the CBD6DC on the bed frame.....	14
Electrical connection	14
External power supply.....	14
Label	15
Disposal of LINAK products	16
Main groups of disposal	17
Disposal of batteries	17
Drawing appendix	18
Addresses	20

Preface

Dear User,

We are delighted that you have chosen a product from LINAK®. LINAK systems are high-tech products based on many years of experience in the manufacture and development of actuators, electric control boxes, controls and chargers.

This User Manual does not address the end-user. It is intended as a source of information for the manufacturer of the equipment or system only, and it will tell you how to install, use and maintain your LINAK electronics. It is the responsibility of the manufacturer of the end-use product to provide a User Manual where relevant safety information from this manual is passed on to the end-user.

We are sure that your LINAK product/system will give you many years of problem-free operation. Before our products leave the factory they undergo full function and quality testing. Should you nevertheless experience problems with your LINAK product/system, you are always welcome to contact your local dealer. LINAK subsidiaries and some distributors situated all over the world have authorised service centres, which are always ready to help you.

LINAK provides a limited warranty on its products. This warranty is, however, subject to correct use in accordance with the specifications, maintenance being done correctly, and any repairs being carried out at a service centre, which is authorised to repair LINAK products. You can review the full terms of the LINAK warranty on the LINAK website www.linak.com/warranty. Changes in installation and use of LINAK products/systems can affect their operation and durability. The products are not to be opened by unauthorised personnel.

The User Manual has been written based on our present technical knowledge. We are constantly working on updating the information and we therefore reserve the right to carry out technical modifications.

LINAK A/S

Valid for:

This User Manual is valid for the following products:

(See the first 3 - 5 characters on the label)

Actuators: TD4 Advanced, TD5 Advanced, and LA40

Control box: CBD6DC

Controls: All wireless HOMELINE® controls

Power supply: SMPS001, SMPS002 and SMPS006

Accessories: WiFi2LIN module, BLE2LIN, Bed Control App, LED light rail, and massage motor

Important information

Important information on LINAK® products can be found under the following headings:



Warning!

Failure to comply with these instructions may result in accidents involving serious personal injury.



Failing to follow these instructions can result in the product being damaged or being destroyed.

Safety instruction



General

Safe use of the system is possible only when the operating instructions are read completely and the instructions contained are strictly observed.

Failure to comply with instructions marked with the "NOTE" symbol may result in serious damage to the system or one of its components.



It is important for everyone who is to connect, install, or use the systems to have the necessary information and access to this User Manual. Follow the instructions for mounting – risk of injury if these instructions are not followed.



The system is not intended for use by young children or infirm persons without supervision.



If there is visible damage on the product it must not be installed.



Note that during construction of applications, in which the product is to be fitted, there must be no possibility of personal injury, for example squeezing of fingers or arms.



Ensure free space for movement of the application in both directions.



The CBD6DC is available as a 2-channel version and requires an external power supply unit, for example the SMPS006.



The product is only to be used with the power supply unit provided with the product.

Safety issues



The builder of the equipment shall ensure that the use of the component complies with relevant standards – like the Machine Directive. Care must be taken to avoid squeezing of cables as it can cause movement of the system!



The CBD6DC and the SMPS001/002/006 must not be packed in heat insulating material, but must be placed so that they can emit waste heat to the surroundings. There are no ventilation holes to consider, the CBD6DC/ SMPS emits heat through its surface.



Only the power supply type SMPS001, SMPS002 or SMPS006, shall be used with the system.

Before installation, de-installation or troubleshooting:

- Stop the control box CBD6DC HOMELINE®.
- Disconnect the power supply.

Before start-up:

- Make sure that the system has been installed as instructed in this User Manual.
- Make sure that the voltage is correct before the system is connected to the mains. (See the CBD6DC HOMELINE® label in the appendix).
- System connection. The individual parts must be connected before connecting to the mains.

During operation:

- If the control box makes unusual noise or smells, switch off the mains voltage immediately.
- Take care that the cables are not damaged.
- Unplug the mains cable on mobile equipment before it is moved.

Misc:

Updated manuals and declarations can always be found here:
www.linak.com/homeline

Only for EU markets



This product can be used by children aged from 8 years and above and persons with reduced physical, sensory or mental capabilities or lack of experience and knowledge if they have given supervision or instruction concerning use of the product in a safe way and understand the hazards involved.



Children shall not play with the product. Cleaning and user maintenance shall not be made by children without supervision.

Only for Non EU markets



Persons who do not have the necessary experience or knowledge of the product/products must not use the product/products. Besides, persons with reduced physical, sensory or mental abilities must not use the product/products, unless they are under surveillance or they have been thoroughly instructed in the use of the apparatus by a person who is responsible for the safety of these persons.



Moreover, children must be under surveillance to ensure that they do not play with the product.

Misuse



Do not overload the actuators – this can cause danger of personal injury and damage to the system.



Do not use the system in environments other than the intended indoor use.

Informations importantes

Les informations importantes sur les produits LINAK® peuvent être trouvées dans les rubriques suivantes:



Attention!

Le non respect de ces instructions peut entraîner des accidents impliquant des blessures graves.



Ne pas suivre ces instructions peut entraîner l'endommagement ou destruction du produit.

Consignes de sécurité



Général

Le non respect de ces instructions peut entraîner des accidents impliquant des blessures graves.

Ne pas suivre ces instructions peut entraîner l'endommagement ou destruction du produit.

L'utilisation en toute sécurité du système n'est possible que si l'intégralité des instructions ont été lues et ont été strictement suivies.



Le non respect de se conformer aux instructions marquées du symbole "note" peut entraîner de graves dommages au système ou à un de ses composants.

Il est important pour tout individu qui connecte, installe, ou utilise le système d'avoir les informations nécessaires et l'accès à ce manuel d'utilisation.

Suivez les instructions pour le montage – risque de blessure si ces instructions ne sont pas suivies.



L'appareil n'est pas destiné à être utilisé par des enfants ou des personnes handicapées sans surveillance.



S'il y a des dommages visibles sur le produit, l'installation ne doit pas être effectuée.



Prendre en compte lors de la construction du matériel, dans lequel l'actionneur est incorporé, qu'il ne doit y avoir aucune possibilité de blessures corporelles, telles que la compression des doigts ou des bras.



Assurez un espace libre autour du matériel pour éviter tout blocage.



Le CBD6DC existe en version 2 canaux et nécessite un module d'alimentation externe, par exemple le SMPS006.



Le produit ne doit être utilisé qu'avec le module d'alimentation fourni avec lui.

Instructions de sécurité



Le constructeur de l'équipement doit s'assurer que l'utilisation du composant est conforme aux normes en vigueur, comme la directive sur les machines. Il faut veiller à ne pas écraser les câbles, car cela peut entraîner un mouvement du système!



Le CBD6DC et le SMPS001/002/006 ne doivent pas être emballés dans un matériau isolant, mais doivent être placés de manière à pouvoir émettre de la chaleur résiduelle dans l'environnement. Il n'y a pas de trous de ventilation à prendre en compte, le CBD6DC/ SMPS émet de la chaleur par sa surface.



Seules les alimentations de type SMPS001, SMPS002 ou SMPS006 doivent être utilisées avec le système.

Avant l'installation, ré-installation ou le dépannage:

- Arrêtez control box CBD6DC HOMELINE®
- Retirez la prise du secteur

Avant de démarrage:

- Assurez-vous que le système a été installé comme indiqué dans le manuel d'utilisateur.
- Assurez-vous que la tension du boîtier de contrôle est correcte avant que le système soit connecté sur le secteur (Voir l'étiquette du CBD6DC HOMELINE® en annexe).
- Système de connexion. Les différentes pièces doivent être connectées entre elles avant que le boîtier de contrôle soit connecté au secteur. Consultez le manuel d'utilisation si nécessaire.

Pendant le fonctionnement:

- Si le boîtier de contrôle émet un bruit ou odeurs inhabituelles, éteignez la tension immédiatement.
- Veuillez à ce que les câbles ne soient pas endommagés.
- Débranchez le câble d'alimentation sur l'équipement mobile avant qu'il ne soit déplacé.
- Les produits ne doivent-êtré utilisés que dans un environnement qui correspond à leur IP.

Divers:

Les mises à jours des manuels et autres informations peuvent-êtré trouvées sur www.linak.com/homeline

Seulement pour les marchés au sein de l'UE:



Ce produit peut-être utilisé par des enfants âgés de 8 ans et plus, ainsi que les personnes dont les capacités physiques, sensorielles ou mentales sont réduites ou ayant un manque d'expérience et de connaissance si elles ont bénéficié d'une surveillance ou d'instructions concernant l'utilisation du produit en toute sécurité et compris les risques encourus.



Les enfants ne doivent pas jouer avec le produit. Le nettoyage et l'entretien ne doivent pas être réalisés par des enfants sans surveillance.

Seulement pour les marchés hors UE:



Les personnes qui n'ont pas l'expérience ou les connaissances nécessaires sur le ou les produit(s) ne doivent pas le ou les utiliser. Par ailleurs, les personnes ayant des capacités physiques, sensorielles ou mentales réduites ne doivent pas utiliser le ou les produit(s), sauf si elles sont sous surveillance ou ont suivi une formation approfondie de l'utilisation de l'appareil par l'individu responsable de la sécurité de ces personnes.



De plus, les enfants doivent-être sous surveillance afin de s'assurer qu'ils ne jouent pas avec le produit.

Utilisation abusive:



Ne surchargez pas les actionneurs – cela peut engendrer un risque de blessures corporelles et endommager le système.



Ne pas utiliser le système dans des environnements autres que l'utilisation intérieure prévue.

Repairs

In order to avoid the risk of malfunction, all HOMELINE® repairs must only be carried out by authorised LINAK service centres or repairers, as special tools must be used and special gaskets must be fitted. Products under warranty must also be returned to authorised LINAK service centres.

Further information on LINAK warranty can be found on the LINAK website www.linak.com/warranty.

EU DECLARATION OF CONFORMITY

LINAK A/S
Smedevænget 8
DK - 6430 Nordborg

Herewith declares under our sole responsibility that the LINAK dual actuator system TWINDRIVE® for use in adjustable beds:

With main component (mark with CE) that are model: TDA and TDB
(with item number; TDa0b000Bccdd00, TDb1b000Bccdd00
(where; a describing spindle pitch; b describing Load rating; cc describing Back Angle; dd describing Leg Angle))

And options of

Port expander: CBD6DC

Linear Actuator(s): LA40

Controls: HC10B, HC20BL, HC30BL, HC40BL, HC05BL, BP10

Power Unit: SMPS001, SMPS006

Under bed light: LEDLightRail001, LEDLightRail002, LEDLR001-0001-xx

Accessories: Massage Motor; MD1000Dx

For **Radio Components** complies with **2014/53/EU** Radio Equipment Directive (RED) according to the standards:

Safety:

EN 60335-1:2012 + AC:2014 + A11:2014 + A13:2017 + A1:2019 + A14:2019 + A2:2019
EN 62368-1:2014 + A1:2017

EMC:

ETSI EN 301 489-1 V2.2.3(2019 -11)
Draft ETSI EN 301 489-17 V3.2.2(2019 -12)

Radio:

EN 300 328 V2.2.2 (2019-07)

Health:

EN 62233:2008+AC:2008, EN 50663:2017, EN 62479:2010

For **Power Unit** complies with the EMC Directive: **2014/30/EU** according to following standard:

EN 55032:2015, EN 61000-3-2:2014, EN 61000-3-3:2013, EN 55024:2010+A1:2015

and complies with Low Voltage Directive **2014/35/EU** according to the standards:

EN 61558-1:2005 + A1:2009, EN 61558-2-16:2009 + A1:2013

And complies with regulation Ecodesign requirements for external power supplies (EU) **2019/1782** according to the standard:

EN 50563:2011 + A1:2013

For **Under bed light, Port expander and Linear Actuator** components complies with **2014/30/EU** EMC Directive according to the standards:

EN 61000-6-2:2005/AC:2005, EN 61000-6-3:2007/A1:2011/AC:2012

And **Port expander and Linear Actuator** comply with Low Voltage Directive **2014/35/EU** according to the standard:

EN 60335-1:2012+AC:2014+A11:2014+A13:2017+A1:2019 +A14:2019 +A2:2019, EN 62233:2008 + AC:2008

All components comply with RoHS2 Directive **2011/65/EU** and RoHS3 Directive **2011/65/EU** according to the standard:

EN 50581:2012

Nordborg, 2021-10-28

LINAK A/S
Dragan Macura
Regulatory Compliance Manager
Deskline and Homeline Segments
Authorized to compile the relevant technical documentation



Original Declaration

Misc. on the CBD6DC HOMELINE

The CBD6DC is an optimal choice for TD4/TD5 Advanced and LA40 applications together with various accessories, such as massage motors or extra light.

Warranty

This HOMELINE product is subject to warranty pursuant to the terms of LINAK HOMELINE Warranty Paper, available on the LINAK website www.linak.com/warranty.

Maintenance

Clean dust and dirt on the outside of the system at appropriate intervals and inspect it for damage and breaks. Inspect the connections, cables and plugs and check for correct functioning as well as fixing points.



The cleaners and disinfectants must not be highly alkaline or acidic (pH value 6-8).

Description of the CBD6DC HOMELINE

The control box ensures smooth adjustment of the bed and soft start and stop of the connected actuators. Another feature is auto-detection of the type.

The CBD6DC is a small and compact control box that requires a minimum of space when mounted.

On opposite sides, the control box has two plugs for connection of actuators. Furthermore, it has two DC plugs and two RJ45 plugs. All plugs are white, so they are easily recognised, for example under the bed.

The CBD6DC is available as a 2-channel version and requires an external power supply unit, for example the SMP5006.

From an environmental perspective, the CBD6DC is a good choice as it has extremely low power consumption in standby mode, only 0.1 W, and the CBD6DC control box is PVC-Free™, which is state-of-the-art.

Installation



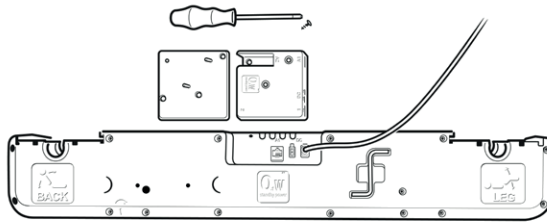
Do not pack the CBD6DC in heat insulating material.
Place the CBD6DC so it can emit heat through its surface to the surroundings.

Mounting the CBD6DC on the TD4/TD5 Advanced

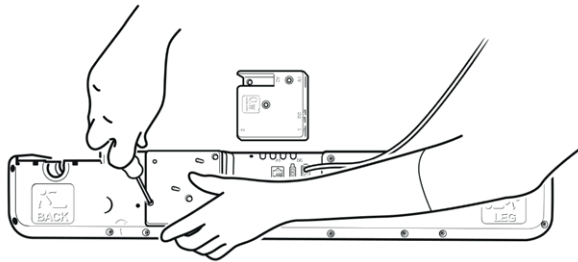
1. The CBD6DC can be mounted directly on a TD4/TD5 by means of the bracket and one screw.

NOTE:

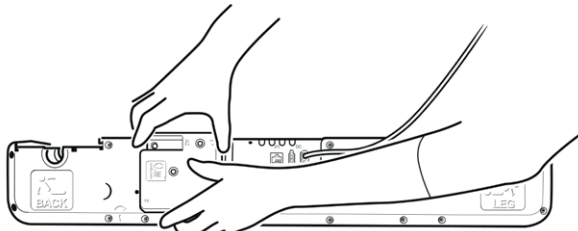
Bracket and screw must be ordered separately (item number SA1062W1004).



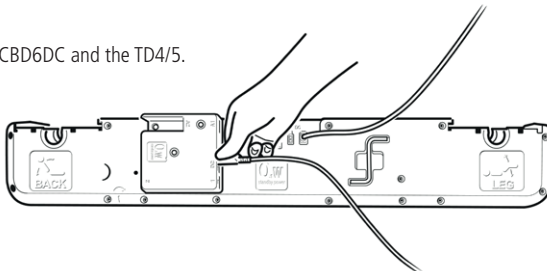
2. The bracket fits into the existing screw holes in the TD4/TD5. Place the bracket on the TD4/TD5 and fasten the screw.



3. Place the CBD6DC on the bracket. Push down until it is clicked onto the bracket.



4. Plug the cables in the CBD6DC and the TD4/5.



Mounting the CBD6DC on the bed frame

1. Mount CBD6DC using two screws with a head diameter of 10 mm (8 to 10 mm can be used).
2. Fasten mounting screws (max. torque 1 Nm).

Notes:


- The surface to which the control box is mounted should have an evenness better than ± 0.5 mm.
- The control box can also be mounted using one or two M6 nuts and screw counterparts, see Drawing appendix.
- The power plug must be accessible when the CBD6DC is mounted so that the supply to the CBD6DC can be disconnected if replacement is required.

Electrical connection

External power supply

The CBD6DC is compatible with Switch Mode Power Supply SMPS001, SMPS002 and SMPS006.

1. Connect the actuator motor cable(s) to plug(s) 1 (and 2).
2. Connect any other accessories/devices.
3. Connect the external power supply (SMPS) to the CBD6DC.

LINAK  Item: CBD6DCP00020A


Designed in Denmark
DK - 6430 Nordborg

U In: max. 40V ---
P In: 175W, max.
SW03002000Vx-xx

Op.: Int. 10%, Max. 2 min. /18 min.

  **File E151104** 

PO: xxxxxxxx **Made in Thailand 06**

Disposal of LINAK products

As LINAK customers often ask us how our products can be disposed of or scrapped we have prepared this guidance that enables a classification to different waste fractions for recycling or combustion.

Guidance

We recommend to disassemble our product into as many fractions as possible at the disposal and try to make it recyclable. As examples of main groups within waste fractions we can mention:

Metal, plastic, cable shoe, combustible waste and collection for recovery.

Some of these main groups can be subdivided, e.g. metal can be divided into iron, stainless steel and aluminium and alloy steel. Plastic can e.g. be divided into ABS, PA, PE and PP.

As an example of sorting, please find below a list stating in which recycling groups the different components of LINAK products ought to be placed:

Product	Components	Recycling group
Actuator:	Spindle and motor Plastic housing Cable	Scrap Plastic recycling or combustion Cable scrap or combustion
Massage motor:	Plastic housing Cable	Plastic recycling or combustion Cable scrap or combustion
Control box:	PCB Plastic housing	Electronics scrap Plastic recycling or combustion
Handset/Control:	Plastic housing PCB Batteries	Plastic recycling or combustion Electronics scrap Recovery

By now almost all our cast plastic parts are supplied with an interior code for plastic type and fibre contents, if any.

Main groups of disposal

Product main groups	Scrap	Cable scrap	Electronics scrap	Plastic recycling or combustin	Comments
CBD6DC HOMELINE			X	X	

Disposal of batteries

Details regarding safe disposal of used and leaking batteries:

Batteries should be disposed in accordance with appropriate federal, state and local regulations. LINAK recommends that used or leaking batteries are disposed through the local recycling system. Please do not throw used or leaking batteries in normal household waste or in nature. This will cause damage to the enviroment.

How to deal with leaking batteries

Leaking batteries should be disposed as described above.

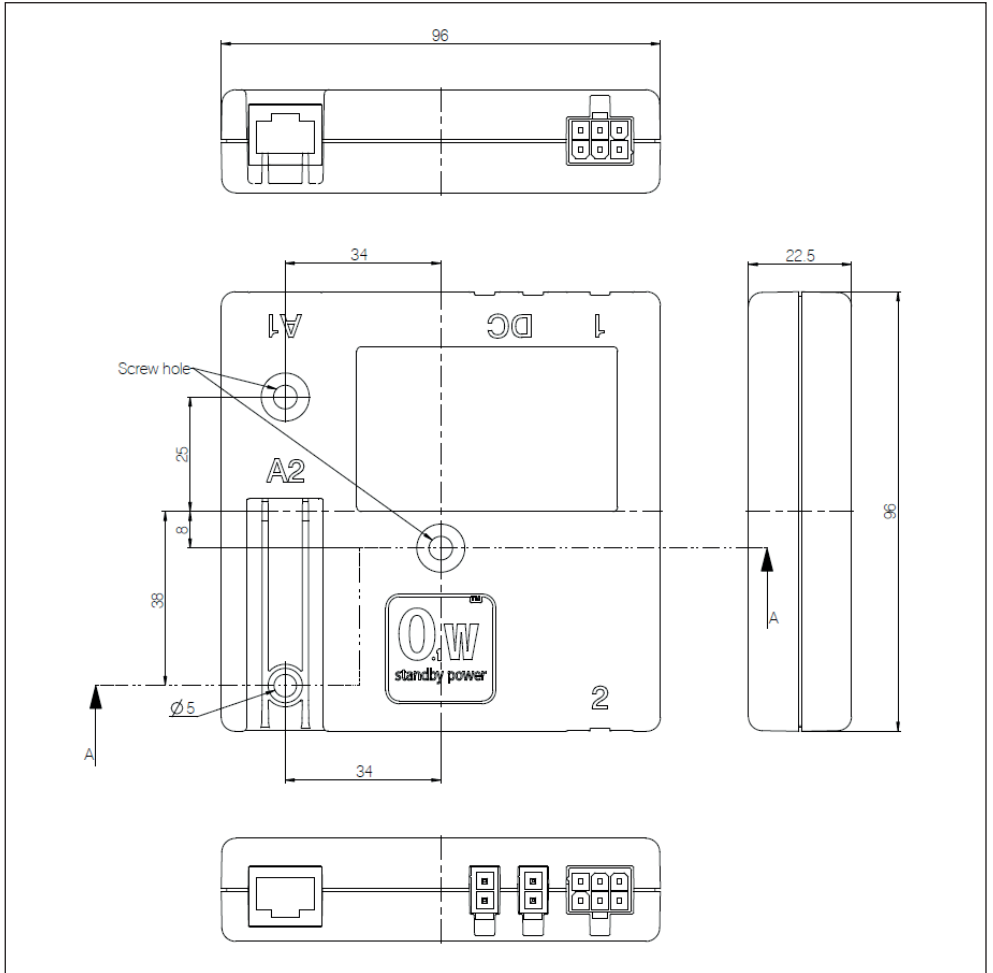
If leaking batteries are discovered in the product the batteries must be removed at once to minimise damage to the product. If leaking batteries are left in the product, it may become defective.

It is recommended to use plastic gloves when handling leaking batteries. The contents of leaking batteries can cause chemical burns and respiratory irritation.

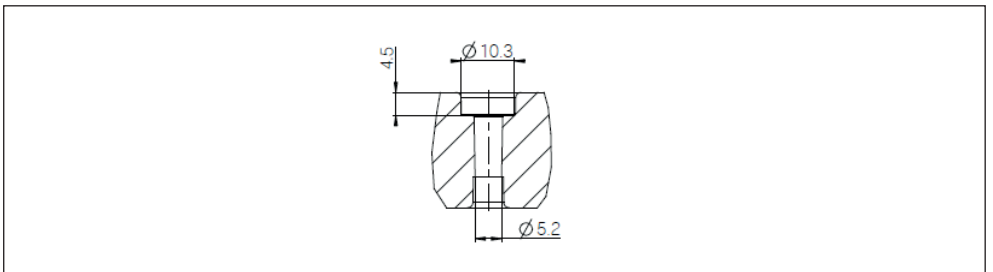
If exposed to the contents of a leaking battery, please wash with soap and water. If irritation persists, please seek medical attention. In case of eye contact, please flush eyes thoroughly with water for 15 minutes and seek medical attention.

DRAWING APPENDIX

CBD6DC dimension



Screw hole dimension



LINAK APPLICATION POLICY

The purpose of the application policy is to define areas of responsibilities in relation to applying a LINAK product defined as hardware, software, technical advice, etc. related to an existing or a new customer application.

LINAK products as defined above are applicable for a wide range of applications within the Medical, Furniture, Desk, and Industry areas. Yet, LINAK cannot know all the conditions under which LINAK products will be installed, used, and operated, as each individual application is unique.

The suitability and functionality of the LINAK product and its performance under varying conditions (application, vibration, load, humidity, temperature, frequency, etc.) can only be verified by testing, and shall ultimately be the responsibility of the LINAK customer using any LINAK product.

LINAK shall be responsible solely that the LINAK products comply with the specifications set out by LINAK and it shall be the responsibility of the LINAK customer to ensure that the specific LINAK product can be used for the application in question.

FACTORIES

• Denmark

LINAK A/S
Group Headquarters
Tel: +45 73 15 15 15
Fax: +45 74 45 80 48
Fax (Sales): +45 73 15 16 13
www.linak.com

• Denmark

LINAK Profiles
Tel: +45 73 70 95 30
www.linak-profiles.com

• China

LINAK (Shenzhen) Actuator Systems, Ltd.
Tel: +86 755 8610 6656
Fax: +86 755 8610 6990
www.linak.cn

• Slovakia

LINAK Slovakia s.r.o.
Tel: +421 51 7563 444
Fax: +421 517563 410
www.linak.sk

• Thailand

LINAK APAC Ltd.
Tel: +66 33 265 400
www.linak.com

• USA

LINAK U.S. Inc.
Americas Headquarters
Tel: +1 502 253 5595
Fax: +1 502 253 5596
www.linak-us.com

SUBSIDIARIES

• Australia

LINAK Australia Pty. Ltd
Tel: +61 3 8796 9777
Fax: +61 3 8796 9778
www.linak.com.au

• Austria

LINAK Repräsentanz
Österreich (Wien)
Tel: +43 (1) 890 7446
Fax: +43 (1) 890 744615
www.linak.at - www.linak.hu

• Belgium

LINAK Benelux
(Belgium & Luxembourg)
Tel: +32 (0)9 230 01 09
www.linak.be - www.fr.linak.be

• Brazil

LINAK Do Brasil Comércio De Atuadores Ltda.
Tel: +55 (11) 2832 7070
Fax: +55 (11) 2832 7060
www.linak.com.br

• Canada

LINAK Canada Inc.
Tel: +1 502 253 5595
Fax: +1 416 255 7720
www.linak-us.com

• China

LINAK (Shenzhen) Actuator Systems, Ltd.
Tel: +86 755 8610 6656
Fax: +86 755 8610 6990
www.linak.cn

• Czech Republic

LINAK C&S s.r.o.
Tel: +42 058 174 1814
Fax: +42 058 170 2452
www.linak.cz - www.linak.sk

• Denmark - Headquarters

LINAK A/S - Group Headquarters
Tel: +45 73 15 15 15
Fax: +45 74 45 80 48
Fax (Sales): +45 73 15 16 13
www.linak.com

• Denmark - International

LINAK International
Tel: +45 73 15 15 15
www.linak.com

• Denmark - Sales

LINAK DANMARK A/S
Tel: +45 86 80 36 11
Fax: +45 86 82 90 51
www.linak.dk

• Finland

LINAK OY
Tel: +358 10 841 8700
www.linak.fi

• France

LINAK FRANCE E.U.R.L
Tel: +33 (0) 2 41 36 34 34
Fax: +33 (0) 2 41 36 35 00
www.linak.fr

• Germany

LINAK GmbH
Tel: +49 6043 9655 0
Fax: +49 6043 9655 60
www.linak.de

• India

LINAK A/S India Liaison Office
Tel: +91 120 4531797
Fax: +91 120 4786428
www.linak.in

• Ireland

LINAK UK Limited (Ireland)
Tel: +44 (0)121 544 2211
Fax: +44 (0)121 544 2552
+44 (0)796 855 1606 (UK Mobile)
+35 387 634 6554 (Republic of Ireland Mobile)
www.linak.co.uk

• Italy

LINAK ITALIA S.r.l.
Tel: +39 02 48 46 33 66
Fax: +39 02 48 46 82 52
www.linak.it

• Japan

LINAK K.K.
Tel: 81-45-533-0802
Fax: 81-45-533-0803
www.linak.jp

• Malaysia

LINAK Actuators Sdn. Bhd.
Tel: +60 4 210 6500
Fax: +60 4 226 8901
www.linak.my

• Netherlands

LINAK Benelux
Tel: +31 76 5 42 44 40
www.linak.nl

• New Zealand

LINAK New Zealand Ltd
Tel: +64 9580 2071
Fax: +64 9580 2072
www.linak.com.au

• Norway

LINAK Norge AS
Tel: +47 32 82 90 90
www.linak.no

• Poland

LINAK Polska
LINAK Danmark A/S (Spółka Akcyjna)
Tel: +48 22 295 09 70/22 295 09 71
www.linak.pl

• Republic of Korea

LINAK Korea Ltd.
Tel: +82 2 6231 1515
Fax: +82 2 6231 1516
www.linak.kr

• Russia

LINAK LLC
Tel: +7 495 780 3161
Fax: +7 495 687 1426
www.linak.ru

• Slovakia

LINAK Slovakia s.r.o.
Tel: +421 51 7563 444
www.linak.sk

• Spain

LINAK Actuadores, S.L.u
Tel: +34 93 588 27 77
Fax: +34 93 588 27 85
www.linak.es

• Sweden

LINAK Scandinavia AB
Tel: +46 8 732 20 00
Fax: +46 8 732 20 50
www.linak.se

• Switzerland

LINAK AG
Tel: +41 43 388 31 88
Fax: +41 43 388 31 87
www.linak.ch - www.fr.linak.ch
www.it.linak.ch

• Taiwan

LINAK (Shenzhen) Actuator systems Ltd.
Taiwan Representative office
Tel: +886 2 27290068
Fax: +886 2 27290096
www.linak.tw

• Thailand

LINAK APAC Ltd.
Tel: +66 33 265 400

• Turkey

LINAK İth. İhr. San. ve Tic. A.Ş.
Tel: +90 312 4726338
Fax: +90 312 4726635
www.linak.com.tr

• United Kingdom

LINAK UK Limited
Tel: +44 (0)121 544 2211
Fax: +44 (0)121 544 2552
www.linak.co.uk

• USA

LINAK U.S. Inc.
North and South American Headquarters
Tel: +1 502 253 5595
Fax: +1 502 253 5596
www.linak-us.com
www.linak-latinamerica.com

DISTRIBUTORS

• Argentina

NOVOTEC ARGENTINA SRL
Tel: 011-4303-8989/8900
Fax: 011-4032-0184
www.novotecargentina.com

• Colombia

MEM Ltda
Tel: +157 (1) 334-7666
Fax: +157 (1) 282-1684
www.mem.net.co

• India

Mechatronics Control Equipments India Pvt Ltd
Tel: +91-44-28558484, 85
www.mechatronicscontrol.com

• Indonesia

PT. HIMALAYA EVEREST JAYA
Tel: +6 221 544 8956/221 544 8965
Fax: +6 221 619 1925
Fax (Sales): +6 221 619 4658
www.hej.co.id

• Iraq

Scan Medical Tech
Tel: +964 770 470 2202

• Israel

NetivTech LTD
Tel: +972 55-2266-535
Fax: +972 2-9900-560
www.netivtech.com

• Kingdom of Bahrain

Mechatronics Industrial Equipments
Tel: +973 17280059
Fax: +973 17910045
www.mechatronicsbh.com

• Qatar

Mechatronics Industrial Equipments
Tel: +974 44581155
Fax: +974 44689135
www.mechatronicsqatar.com

• Russia

OOO FAM
Tel: +7 812 3319333
Fax: +7 812 3271454
www.fam-drive.ru

• Singapore

Servo Dynamics Pte Ltd
Tel: +65 6844 0288
Fax (Sales): +65 6844 0070

• South Africa

Industrial Specialised Applications CC
Tel: +27 011 466 0346
www.isaza.co.za

• United Arab Emirates

Mechatronics Industrial Equipments LLC
Tel: +971 4 267 4311
Fax: +971 4 267 4312
www.mechatronics.ae

LINAK® accepts no responsibility for possible errors or inaccuracies in catalogues, brochures, and other material. LINAK reserves the right to change its products without prior notice. LINAK cannot guarantee product availability and reserves the right to discontinue the sale of any product. The user is responsible for determining the suitability of LINAK products for a specific application. All sales are subject to the 'Standard Terms of Sale and Delivery', available on LINAK websites.

LINAK and the LINAK logotype are registered trademarks of LINAK A/S. All rights reserved.



WE IMPROVE YOUR LIFE