

Desk Frame 3 (DF3) User Manual



Contents

Preface	3
Important information	4
Important safety instruction	4
General	4
Intended use	5
Before installation, re-installation, cleaning, or troubleshooting.....	5
Before start-up	5
During operation	5
Servicing of double-insulated products.....	5
Miscellaneous.....	5
Repairs.....	6
Only for EU markets.....	7
Only for Non EU markets	7
Misuse	7
Misc. on the DESKLINE® system.....	8
Warranty	8
Maintenance	8
Cleaning the desk panel	8
Description of the DESKLINE® Desk Frame 3	9
Installation	11
Assembling the top frame.....	11
Mounting the cantilevers	12
Mounting the top frame.....	13
Mounting the columns	14
Mounting the feet.....	15
Mounting the desk panel	17
Connecting the mains cable.....	18
Finalising the assembly.....	19
Disassembly	19
Repair and disposal	20
Accessories and spare parts.....	20

Preface

Dear User,

We are delighted that you have chosen a LINAK® product.

LINAK systems are high-tech products based on many years of experience in the manufacture and development of actuators, lifting columns, desk frames, electric control boxes, controls, batteries, accessories and chargers.

This User Manual does not address the end user. It is intended as a source of information for the equipment or system manufacturer only, and it will tell you how to install, use and maintain your LINAK electronics. The manufacturer of the end product has the responsibility to provide a User Manual, where relevant safety information from this manual is passed on to the end user.

We are convinced that your LINAK product/system will give you many years of problem-free operation.

Before our products leave the factory, they undergo both function and quality testing. Should you, nevertheless, experience problems with your product/system, you are always welcome to contact your supplier.

LINAK subsidiaries and some distributors situated all over the world have authorised service centres, which are always ready to help you. Locate your local contact information on the back page.

LINAK provides a warranty on all products, see [Warranty](#).

This warranty, however, is subject to correct use in accordance with the specifications, maintenance being done correctly, and any repairs being carried out at a service centre, which is authorised to repair LINAK products.

Changes in installation and use of LINAK systems can affect their operation and durability. The products may only be opened by authorised personnel.

This User Manual has been written based on the present technical knowledge. LINAK reserves the right to carry out technical modifications and keeps the associated information updated.

LINAK A/S

Important safety information

Safe use of the system is possible only when this document is read completely and the instructions contained are strictly observed.

Failure to comply with instructions marked with the "NOTICE" symbol may result in serious damage to the system or one of its components.

Read all instructions before using this product.

Important safety information on LINAK® products can be found under the following heading(s):



DANGER

Failure to comply with these instructions will result in severe personal injury.



WARNING

Failure to comply with these instructions may result in severe personal injury.



CAUTION

Failure to comply with these instructions can result in minor personal injury.



NOTICE

Failure to comply with these instructions can result in property damage.

READ AND SAVE THESE INSTRUCTIONS

Safety instructions

Important safety instructions

General



DANGER

Plugged-in products

Risk of electric shock

- Always unplug this product from the electrical outlet before assembling, disassembling, cleaning, or servicing.
- Only use the product indoors in dry locations.



WARNING

General precautions

Risk of burns, fire, electric shock, or injury to persons

- Unplug from outlet before putting on or taking off parts.
- It is important that everyone who is to connect, install, or use the systems has the necessary information and access to this User Manual. Follow the instructions for mounting - there is a risk of injury if these instructions are not followed.
- Close supervision is necessary when this product is used by or near children, invalids, or disabled persons.
- If there is visible damage to the product, do not install or use the product.
- Ensure that the cable and the plug are not damaged, and keep the cable away from heated surfaces.
- Use this product only for its intended use as described in this User Manual. Do not use attachments not recommended by the manufacturer.
- Never insert any object into any opening.
- During construction of applications in which the system is to be fitted, there must be no risk of personal injury, for example squeezing of fingers or arms.
- Do not open the product.



CAUTION

Objects above and below the desk

Risk of personal injury and material damage

- Ensure free space above and below the application to avoid entrapment and blocking the movement in either direction.

Intended use

This product is intended for use indoors in household and commercial usage areas.

Parameter	Operation	Storage and transportation
Temperature	10 to 40 °C	-10 to +50 °C
Relative humidity	20% to 80% - non-condensing	20% to 80% - non-condensing
Atmospheric pressure	800 to 1060 hPa	700 to 1060 hPa
Altitude	Max. 2000 m	N/A



Do not use outdoors or in wet areas.



Do not use it in environments that have to be cleaned with aggressive detergents.

Before installation, re-installation, cleaning, or troubleshooting

- Stop the system.
- Unplug the power cable.
- Relieve the system of any loads, which may be released during the work.
- Review the assembly instructions to confirm that the appropriate critical components and accessories are being used with this product.

Before start-up

- Make sure that the system has been installed as instructed in this User Manual.
- Make sure that the voltage of the system matches the mains voltage before connecting the system to the mains.
- Always use the supplied power cable.

During operation

- If the system makes unusual noise or smells, unplug the mains cable immediately.
- The maximum total load on the frame is:
 - Three-part columns (230-240 V and 120 V):
 - 160 kg equally loaded, i.e. 80 kg on each column. The 160 kg include the tabletop.
 - Three-part columns (100 V):
 - 140 kg equally loaded, i.e. 70 kg on each column. The 140 kg include the tabletop.
 - Two-part columns:
 - 100 kg equally loaded, i.e. 50 kg on each column. The 100 kg include the tabletop.
- The self-lock of the frame is:
 - Three-part columns: 120 kg equally loaded, i.e. 60 kg on each column. The 120 kg include the tabletop.
 - Two-part columns: 100 kg equally loaded, i.e. 50 kg on each column. The 100 kg include the tabletop.
- Duty cycle: 5 %, max. 1 minute continuous use at full load followed by 19 minutes pause.
- Take care that the cables are not damaged.
- Unplug the mains cable on mobile equipment before moving it.
- The products must only be used in an environment, that corresponds to their IP protection.



CAUTION

Load on the desk

Risk of injury to persons and of malfunction

- Do not overload the frame.
- Place heavy load centrally on the desk.
- Do not use the desk as a work bench.
- Do not use the frame for lifting persons.
- Do not stand on the desk while it is driving up or down.



NOTICE

Duty cycle

Risk of malfunction

- Do not exceed the duty cycle.



WARNING

- This appliance can be used by children aged from 8 years, and by persons with reduced physical, sensory or mental capabilities, or lack of experience and knowledge, if they have been given supervision or instruction concerning use of the appliance in a safe way and understand the hazards involved.
- Children shall not play with the appliance. Cleaning and user maintenance shall not be made by children without supervision.

Only for US and Canadian markets

- Persons who do not have the necessary experience or knowledge of the product/products must not use the product/products. Besides, persons with reduced physical, sensory, or mental abilities must not use the product/products, unless they are under surveillance or they have been thoroughly instructed in the use of the apparatus by a person who is responsible for the safety of these persons.
- Moreover, children must be under surveillance to ensure that they do not play with the product.
- It is the operator's responsibility to ensure that there is free space for the application to move without risk for the operator or bystanders before operating the application.

Repairs



WARNING


Opening the product

Risk of injury to persons

- Do not open the DESKLINE® product.

In order to avoid the risk of malfunction, all DESKLINE® repairs must only be carried out by authorised LINAK workshops or repairers, as special tools must be used and special gaskets must be fitted. Lifting units under warranty must also be returned to authorised LINAK workshops.

Servicing of double-insulated products

In a double-insulated product, two systems of insulation are provided instead of grounding. No grounding means is provided on a double-insulated product, nor is a means for grounding to be added to the product. Servicing a double-insulated product requires extreme care and knowledge of the system, and is to be done only by qualified service personnel. Replacement parts for a double-insulated product must be identical to the parts they replace. A double-insulated product is marked with the words "Double insulation" or "Double insulated." The symbol (square within a square)  is also able to be marked on the product.

Informations importantes en matière de sécurité

Une utilisation sûre du système n'est possible que lorsque ce document est lu dans son intégralité et que les instructions qu'il contient sont strictement respectées.

Le non-respect des instructions marquées du symbole "AVIS" peut entraîner de graves dommages au système ou à l'un de ses composants.

Lisez toutes les instructions avant d'utiliser ce produit.

Des informations de sécurité importantes sur les produits LINAK® sont disponibles dans la ou les rubriques suivantes :



DANGER

Le non-respect de ces instructions entraînera des blessures graves.



AVERTISSEMENT

Le non-respect de ces instructions peut entraîner des blessures graves.



ATTENTION

Le non-respect de ces instructions peut entraîner des blessures corporelles légères.



AVIS

Le non-respect de ces instructions peut entraîner des dommages matériels.

LIRE ET CONSERVER CES INSTRUCTIONS

Consignes de sécurité

Consignes importantes de sécurité

Général



DANGER

Produits enfichés

Risque de choc électrique

- Débranchez toujours ce produit de la prise électrique avant de l'assembler, de le démonter, de le nettoyer ou de l'entretenir.
- N'utilisez le produit qu'à l'intérieur, dans des endroits secs.



AVERTISSEMENT

Précautions générales

Risque de brûlures, d'incendie, d'électrocution ou de blessure des personnes

- Débrancher la prise de courant avant de mettre ou de retirer des pièces.
- Il est important que toutes les personnes chargées de connecter, d'installer ou d'utiliser les systèmes disposent des informations nécessaires et aient accès à ce manuel de l'utilisateur. Suivez les instructions de montage - risque de blessure en cas de non-respect de ces instructions.
- L'appareil n'est pas destiné à être utilisé par de jeunes enfants ou des personnes infirmes sans surveillance.
- Si le produit présente des dommages visibles, il ne doit pas être installé.
- Veillez à ce que le câble et la fiche ne soient pas endommagés et tenez le câble éloigné des surfaces chauffées.
- N'utilisez ce produit que pour l'usage auquel il est destiné, tel qu'il est décrit dans ce manuel de l'utilisateur.
N'utilisez pas d'accessoires non recommandés par le fabricant.
- N'insérez jamais d'objet dans une ouverture.
- Il convient de noter que lors de la construction des applications dans lesquelles l'actionneur doit être monté, il ne doit pas y avoir de risque de blessure, par exemple en cas d'écrasement des doigts ou des bras.
- N'ouvrez pas le produit.



ATTENTION

Objets au-dessus et au-dessous du bureau

Risque de blessures et de dommages matériels

- Veillez à ce qu'il y ait un espace libre au-dessus et au-dessous de l'application afin d'éviter tout risque de coincement et de blocage du mouvement dans l'une ou l'autre direction.

Utilisation prévue

Ce produit est destiné à être utilisé à l'intérieur des habitations et des locaux commerciaux.

Paramètre	Fonctionnement	Stockage et transport
Température	10 à 40 °C	-10 à +50 °C
Humidité relative	20% à 80% - sans condensation	20% à 80% - sans condensation
Pression atmosphérique	800 à 1060 hPa	700 à 1060 hPa
Altitude	Max. 2000 m	N/A



Ne pas utiliser à l'extérieur ou dans des zones humides.



Ne pas utiliser dans des environnements qui doivent être nettoyés avec des détergents agressifs.

Avant l'installation, la réinstallation, le nettoyage ou le dépannage

- Arrêter le système.
- Débrancher le câble d'alimentation.
- Libérer le cadre de toute charge susceptible d'être libérée pendant les travaux.
- Examinez les instructions d'assemblage pour vous assurer que les composants et accessoires critiques appropriés sont utilisés avec ce produit.

Avant le démarrage

- Assurez-vous que le système a été installé conformément aux instructions du présent manuel de l'utilisateur.
- Assurez-vous que la tension du système correspond à la tension du réseau avant de raccorder le système au réseau.
- Utilisez toujours le câble d'alimentation fourni.

Pendant le fonctionnement

- Si le système émet des bruits ou des odeurs inhabituels, débranchez immédiatement le câble d'alimentation.
- La force de levage maximale sur le cadre:
 - Trois-parties colonnes (230-240 V et 120 V):
 - 160 kg répartie de manière égale (80 kg par colonne). Les 160 kg compris le plateau.
 - Trois-parties colonnes (100 V):
 - 140 kg répartie de manière égale (70 kg par colonne). Les 140 kg compris le plateau.
 - Deux-parties colonnes:
 - 100 kg répartie de manière égale (50 kg par colonne). Les 100 kg compris le plateau.
- L'autoblocage maximale sur le cadre::
 - Trois-parties colonnes:
 - 120 kg répartie de manière égale (60 kg par colonne). Les 120 kg compris le plateau.
 - Deux-parties colonnes:
 - 100 kg répartie de manière égale (50 kg par colonne). Les 100 kg compris le plateau.
- Cycle d'utilisation : 5 %, max. 1 minute d'utilisation continue à pleine charge suivie de 19 minutes de pause.
- Veillez à ce que les câbles ne soient pas endommagés.
- Débrancher le câble d'alimentation de l'équipement mobile avant de le déplacer.
- Les produits ne doivent être utilisés que dans un environnement correspondant à leur protection IP.



ATTENTION

Charge sur le bureau

Risque de dommages corporels et de dysfonctionnement

- Ne pas surcharger le cadre.
- Placer la charge lourde au centre du bureau.
- Ne pas utiliser le bureau comme table de travail.
- Ne pas utiliser le cadre pour soulever des personnes.
- Ne vous tenez pas debout sur le bureau pendant qu'il monte ou descend.



NOTICE

Cycle d'utilisation

Risque de dysfonctionnement

- Ne dépassez pas le cycle d'utilisation.



AVERTISSEMENT

- Cet appareil peut-être utilisé par des enfants âgés de 8 ans et plus, ainsi que les personnes dont les capacités physiques, sensorielles ou mentales sont réduites ou ayant un manque d'expérience et de connaissance si elles ont bénéficié d'une surveillance ou d'instructions concernant l'utilisation de l'appareil en toute sécurité et compris les risques encourus.
- Les enfants ne doivent pas jouer avec l'appareil. Le nettoyage et l'entretien ne doivent pas être réalisés par des enfants sans surveillance

Seulement pour les marchés américains et canadiens

- Les personnes qui n'ont pas l'expérience ou les connaissances nécessaires sur le ou les produit(s) ne doivent pas le ou les utiliser. Par ailleurs, les personnes ayant des capacités physiques, sensorielles ou mentales réduites ne doivent pas utiliser le ou les produit(s), sauf si elles sont sous surveillance ou ont suivi une formation approfondie de l'utilisation de l'appareil par l'individu responsable de la sécurité de ces personnes.
- De plus, les enfants doivent-être sous surveillance afin de s'assurer qu'ils ne jouent pas avec le produit.
- Il est de la responsabilité de l'opérateur de s'assurer qu'il y a de l'espace libre pour que l'application puisse se déplacer sans risque pour l'opérateur ou les passants avant d'utiliser l'application.

Réparations



AVERTISSEMENT


Ouverture du produit

Risque de blessure pour les personnes

- Ne pas ouvrir le produit DESKLINE®.

Afin d'éviter tout risque de dysfonctionnement, toutes les réparations de DESKLINE® doivent être effectuées par des ateliers ou des réparateurs LINAK agréés, car des outils spéciaux doivent être utilisés et des joints spéciaux doivent être montés. Les unités de levage sous garantie doivent également être retournées aux ateliers LINAK agréés.

Entretien des produits à double isolation

Dans un produit à double isolation, deux systèmes d'isolation sont prévus au lieu de la mise à la terre. Aucun moyen de mise à la terre n'est prévu sur un produit à double isolation, et aucun moyen de mise à la terre ne doit être ajouté au produit. L'entretien d'un produit à double isolation nécessite une attention et une connaissance extrêmes du système et ne doit être effectué que par un personnel qualifié. Les pièces de rechange d'un produit à double isolation doivent être identiques à celles qu'elles remplacent. Un produit à double isolation est marqué des mots "Double isolation" ou "Double isolé". Le symbole  (carré dans un carré) peut également être apposé sur le produit.

Misc. on the DESKLINE® system

This system is a DESKLINE system developed for desks and for indoor use in offices. Do not use it in industrial kitchens or in other environments that have to be cleaned with aggressive detergents.

Warranty

This DESKLINE product is subject to warranty pursuant to the terms of LINAK DESKLINE Warranty Paper, available on the LINAK website www.linak.com/warranty.

Maintenance

Clean dust and dirt off the outside of the system at appropriate intervals and inspect them for damage and breaks.

Inspect the connections, cables, and plugs and check for correct functioning as well as fixing points.

Cleaning the desk panel

Clean your desk panel with a soft damp cloth. Universal cleaning detergents may be used.



For disinfection of the desk panel, use a 70 percent isopropyl alcohol either as a wipe or add a small amount to a soft cloth.

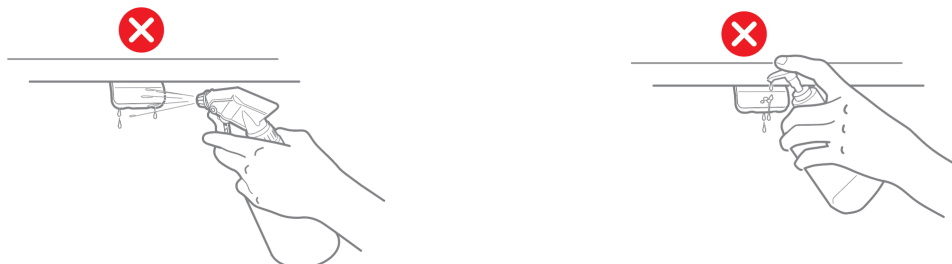


The desk panel is not a sealed unit and there are electronics inside it.

If liquids or moisture enter an opening, the PCB may be damaged, and the desk panel ruined.

Thus:

- Avoid moisture penetrating any openings as this may damage the PCB inside the desk panel
- Avoid spraying the cleaning agent or disinfectant directly on the desk panel as moisture may penetrate openings damaging the PCB inside the desk panel



- Cleaning agents and disinfectants must not be highly alkaline or acidic (pH value must be 6 to 8), and they must not contain bleach or chlorine
- Do not use hand sanitizer gel as a cleaning agent

Description of the DESKLINE® Desk Frame 3

The Desk Frame 3 (DF3) is a complete 2-legged frame from LINAK® developed with focus on simple and intuitive assembly. It is evolved around a top frame called the beam. The beam contains all electronics including the motor and all cable wiring.

The DF3 frame is available in various 2-legged frame configurations from simple frames to frames featuring the Internal Desk Sensor (IDS), an anti-collision technology which ensures that collisions with obstacles do not damage the furniture, as well as the possibility to connect desk panels with display and memory.

The lifting columns have no visible gliding pads and no punch holes in the profiles and are available in various designs and as two-part or three-part columns.

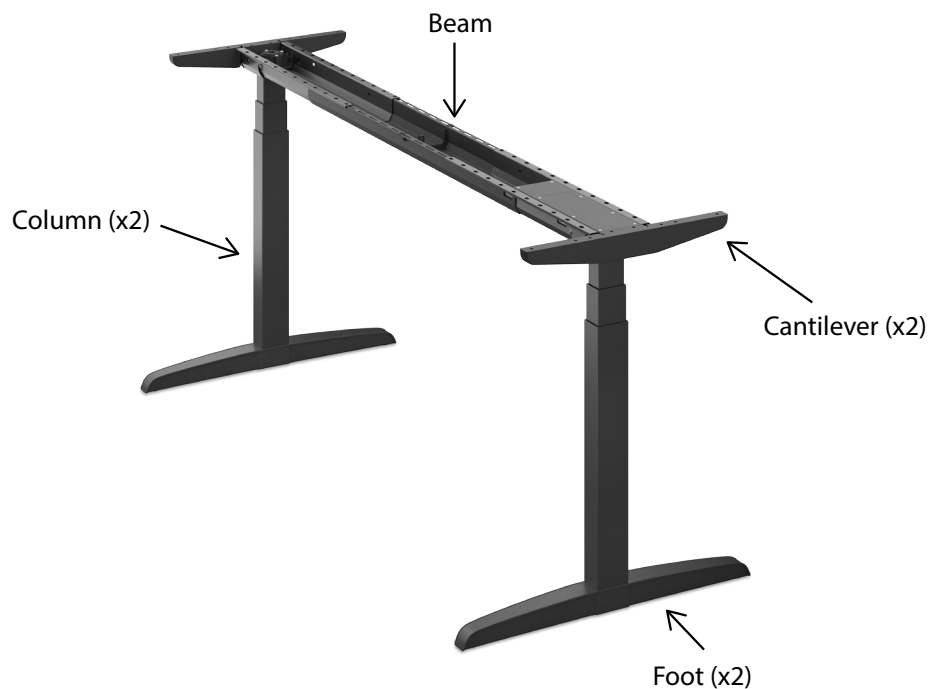


Figure 1 DF3 part names

Mounting kit

- 16 mounting screws for the beam and the cables (4.5 x 20 mm) - suitable for 25 mm tabletops
- 12 mounting screws for the cantilevers (4.5 x 35 mm)
- 2 mounting screws for the desk panel (4.0 x 20 mm for DPA, DPB, and DPF; or 4.0 x 35 for DPG)
- 3 cable clamps (Ø6.6 mm)
- 4 mounting screws for the columns (M6 x 20 mm) (blank or black)

Table size and type

The Desk Frame 3 is designed for T-desks and must be mounted centrally on the tabletop.



Recommended tabletop:

Material	Veneered chipboard (similar or better strength)
Thickness	Min 25 mm (1") - appropriate for the supplied mounting screws
Size	Min. 584 x 1180 mm (23 x 47")
	Max. 800 x 1829 mm (31.5 x 72")

As the outer rail is made of polymer, we highly recommend to mount the DF3 on a minimum 25 mm thick tabletop to ensure stability.

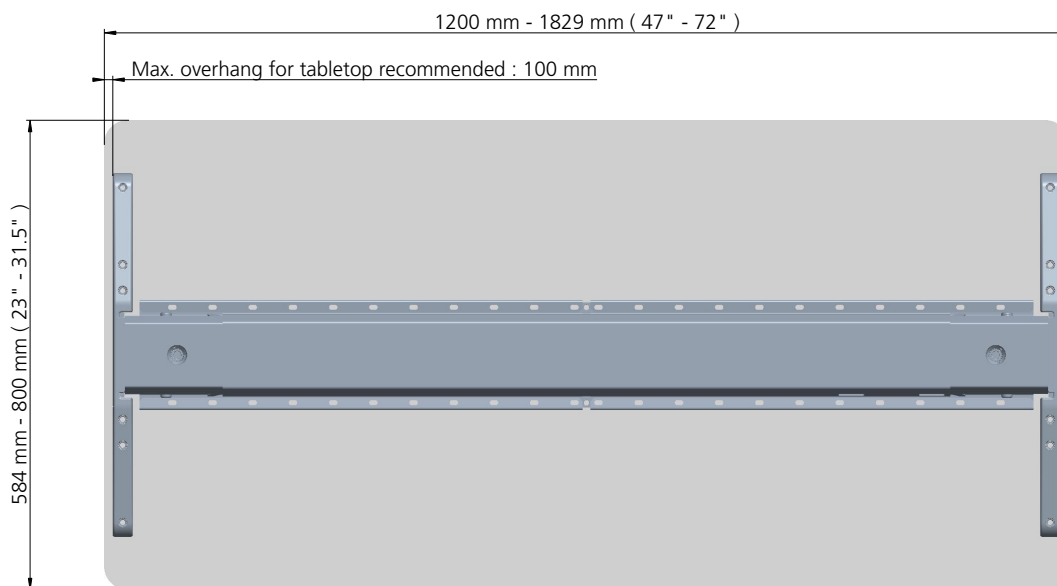


Figure 2 DF3 (standard) mounted centrally on the tabletop

Installation



Check the packaging and the delivered items for visible damage and ensure that the drive shaft is mounted correctly and not pulled apart.

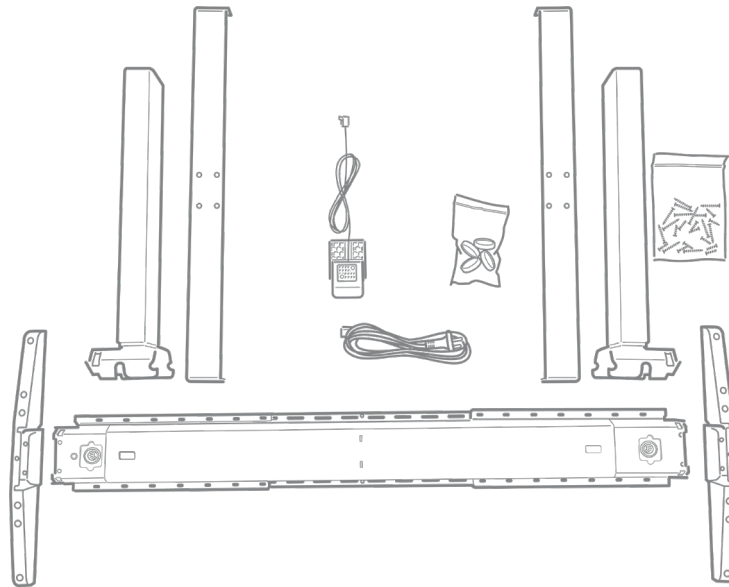


Keep the plastic bags away from babies and children.

A mounting instruction video is available [here](#)

Preparing the assembly

1. Gather all parts for the desk including the tabletop.



2. Turn the tabletop upside down.



The DF3 frame must be mounted on a tabletop. It is not suited for being assembled and moved without a tabletop.

Assembling the top frame

Fixing the beam length



Be careful when adjusting the beam. Fingers may get squeezed.

1. Extend the beam to the required length.
Standard: 1150 mm to 1750 mm (45" to 69")



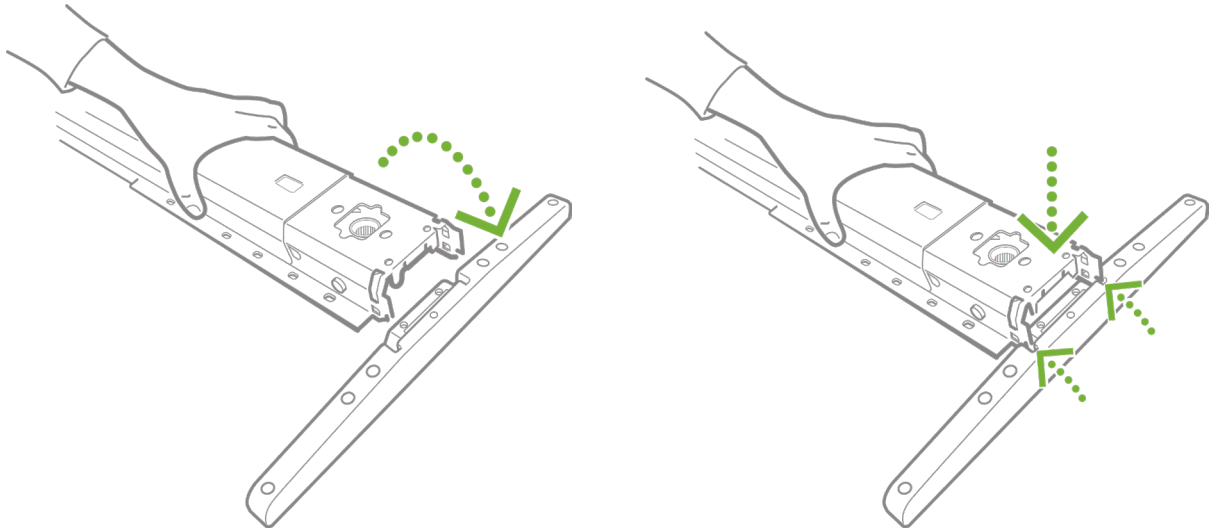
The beam must **not** be pulled completely apart in order not to pull the drive shaft apart.



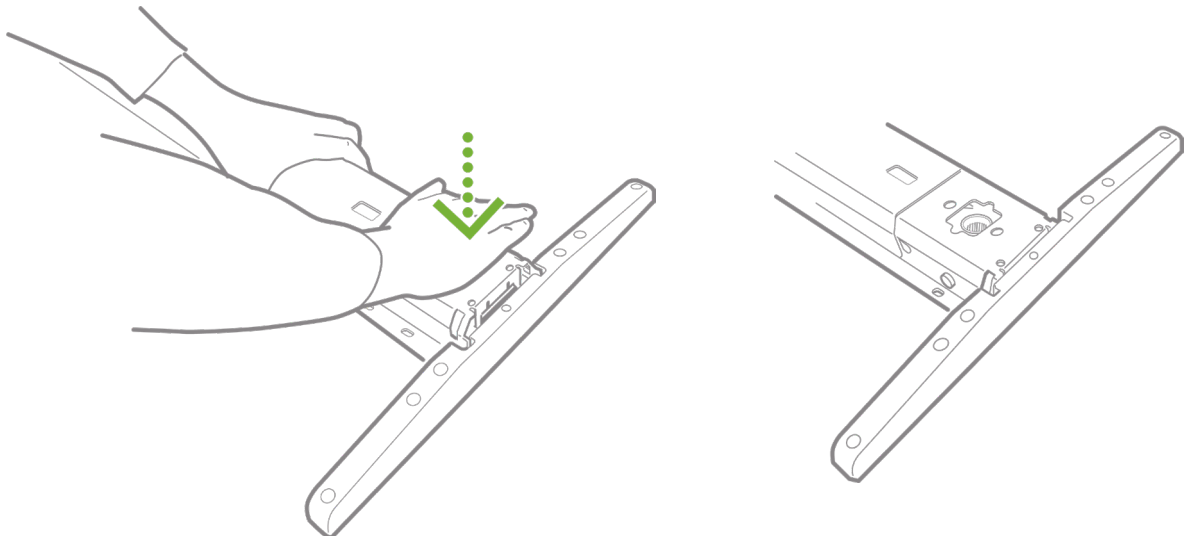
Minimum adjustment in the connection end is 100 mm (4") (to keep the sockets accessible), otherwise adjustable in 25 mm (1") steps.

Mounting the cantilevers

1. Place a cantilever at the end of the beam.
2. Lift the beam slightly and align it with the slots in the cantilever.



3. Press the beam firmly down by hand to attach the cantilever to the beam.



Be careful when assembling the beam and the cantilever. Fingers may get squeezed.

4. Mount the other cantilever in the other end of the beam.



Do not extract the beam using the cantilevers as handles.

Mounting the top frame

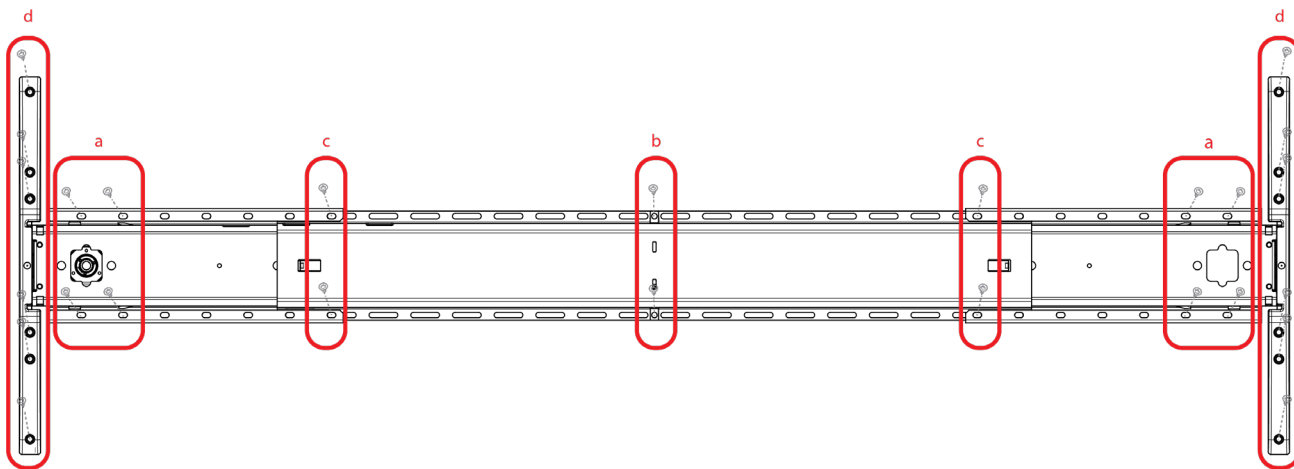
1. Place the assembled top frame on the tabletop in the correct position.
Use a tape measure to ensure central placement of the top frame.
2. Fasten the top frame to the tabletop.



Tighten the screws thoroughly without overstraining.

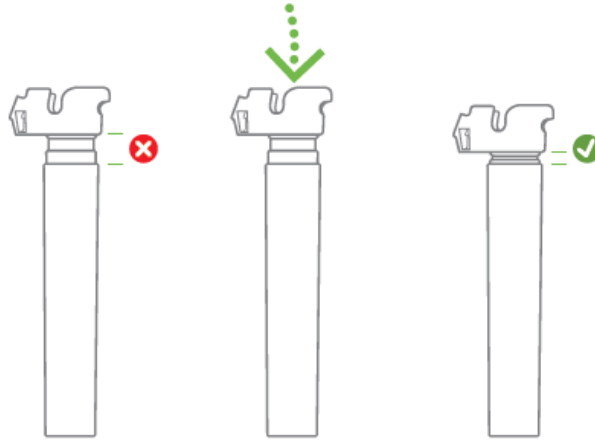
Example: Max. torque for a veneered chipboard tabletop is 4 Nm.

3. Use mounting screws as follows:
 - 3.a. 8 screws (4.5 x 20 mm) at the ends of the beam.
Use one of these to fix the mains cable to the beam with a cable clamp creating a cable relief, see [Connecting the mains cable](#).
 - 3.b. 2 screws (4.5 x 20 mm) in the outer rail.
 - 3.c. 4 screws (4.5 x 20 mm) at the extension points.
 - 3.d. 12 screws (4.5 x 35 mm) in the cantilevers.



Mounting the columns

1. Ensure that the columns are completely retracted.

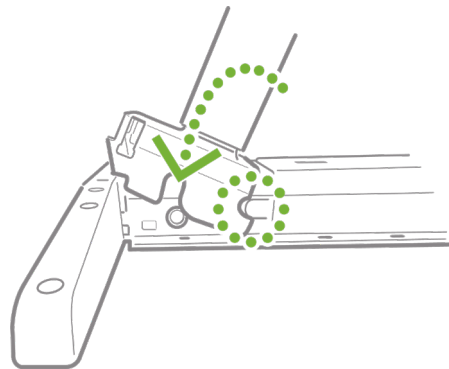


If the column extracts when turned upside down, press by hand to completely retracted position.

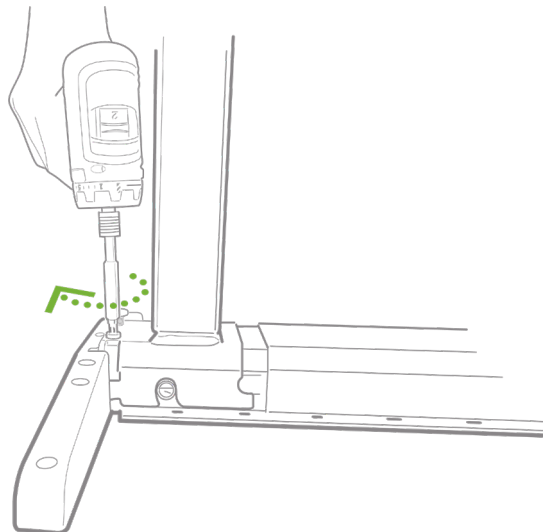


Be careful when adjusting the columns. Fingers may get squeezed or crushed.

2. Tilt the columns and place them correctly on the beam using the guiding notches.
3. Push the column to an upright position.



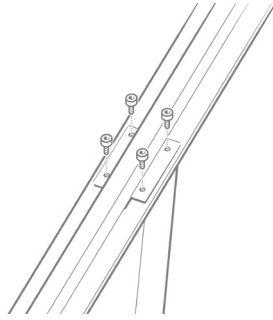
4. Fasten the column to the beam by the means of two screws (M6 x 20 mm).



Mounting the feet

Metal feet (on-top or recessed)

1. Mount the feet on the columns using four M6 or two M8 screws for each foot.



The columns have four M6 and two M8 threaded holes in the bottom plate. For mounting the feet, always use four M6 or two M8 screws with the following specifications:

- Quality: Min. grade 8.8
- Length: Min. 10 mm (plus foot thickness);
Max. 16 mm (plus foot thickness) for M6
Max. 14 mm (plus foot thickness) for M8

2. Fasten the screws thoroughly (torque: max. 10 Nm).

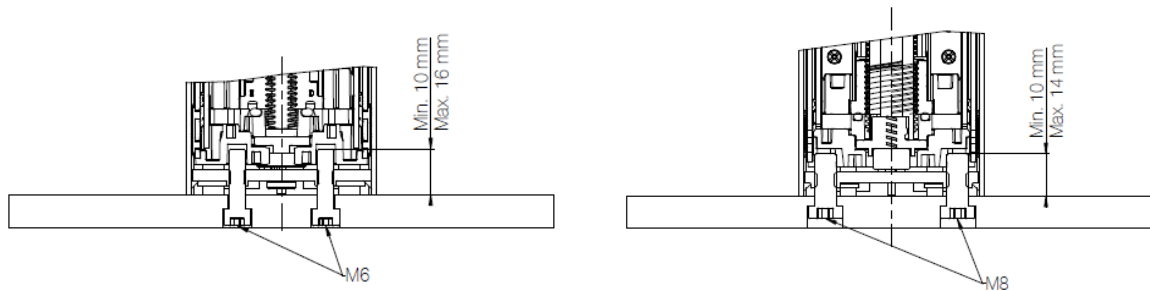


Figure 3 Column bottom mounted on desk foot (left: M6; right: M8)

3. Mount the adjustment screws.

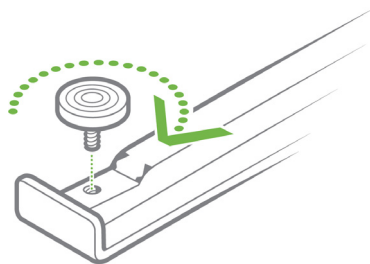


Figure 4 Mounting of adjustment screw.

Composite feet

1. Mount the feet on the columns using four M6 or two M8 screws for each foot.

The columns have four M6 and two M8 threaded holes in the bottom plate.

Please note: The DF2L23 has only two M8 holes for mounting of the feet.

For mounting the feet, always use four M6 or two M8 screws with the following specifications:

Quality: Min. grade 8.8
Length: Min. 10 mm (plus foot thickness);
Max. 16 mm (plus foot thickness) for M6
Max. 14 mm (plus foot thickness) for M8

2. Fasten the screws thoroughly.
Torque: Max. 6 Nm for M6
Max. 8 Nm for M8
3. Mount the adjustment screws.

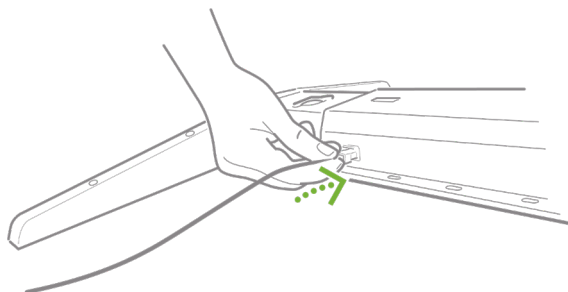
Mounting the desk panel

The drawings below are side view examples of how to position the desk panel proportionally to the edge of the tabletop.



Ensure that only one desk panel at the time is connected to the DF3.

1. Connect the desk panel in one of the RJ45 sockets.



2. Fasten the desk panel to the tabletop close to the edge using the dedicated mounting screws (4.0 x 20 mm for DPA, DPB, or DPF or 4.0 x 35 for DPG).
 - 2.a. Place the DPG so the display and the light strip are in a visible position.

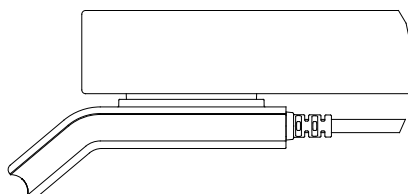
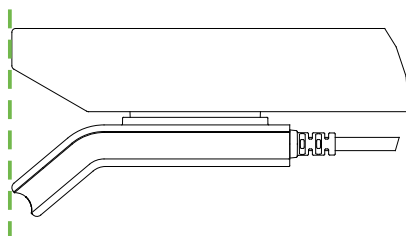


Figure 5 Alignment of the DPG in proportion to tabletop edge

or

- 2.b. Mount the DPF using a 90° mounting bracket and place it close to the tabletop edge.

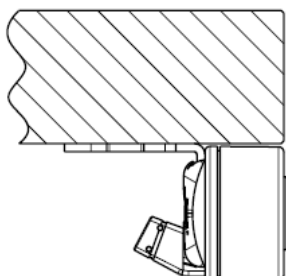


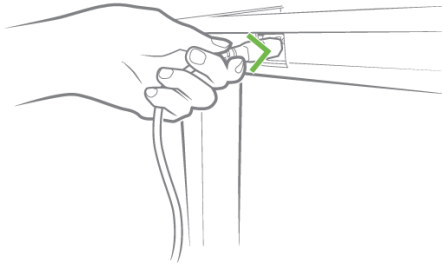
Figure 6 Alignment of the DPF in proportion to tabletop edge

3. Fasten the cable to the tabletop using two screws (4.5 x 20 mm) and two cable clamps.

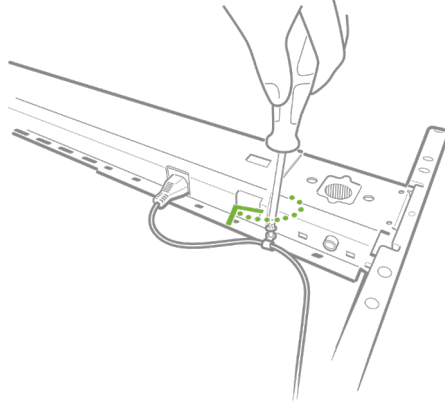


Connecting the mains cable

1. Plug the mains cable into the beam.



Ensure to make a cable relief using the cable clamp when fastening the cable to the tabletop.



Finalising the assembly

1. Flip the desk over.



It is recommended **not** to flip the desk over single-handed as the desk is too heavy. You might get injured, or the desk might be damaged if dropped.

2. Connect to the mains supply.

Your desk is now ready for use.



Check for loose screws on a regular basis. Fasten if necessary.



During use the load on the desk must be equally distributed across the tabletop.

For operation of the desk, please see the relevant desk panel [User Manual](#).

Disassembly

A disassembly instruction video is available [here](#)

1. Drive the desk to its minimum height so the columns are completely retracted.
2. Disconnect from the mains supply.
3. Flip the desk over.



It is recommended **not** to flip the desk over single-handed as the desk is too heavy. You might get injured, or the desk might be damaged if dropped.

4. Disconnect, unscrew and remove the desk panel.
5. Unscrew and remove the feet.
6. Unscrew the columns from the beam.
7. Tilt the column to remove it from the beam.

Repair and disposal



WARNING

Opening the product

Risk of injury to persons and of malfunction

- Do not open the product unless you are authorised to do so.

Only an authorised LINAK® service centre should repair the LINAK products. Products to be repaired under warranty must be sent to an authorised LINAK service centre.

In order to avoid the risk of malfunction, all product repairs must only be carried out by an authorised LINAK Service shop or repairers, as special tools and parts must be used.

If a product is opened by unauthorised personnel there is a risk that it may malfunction at a later date.

LINAK systems or components may be disposed of, possibly by dividing them into different waste groups for recycling or combustion.

We recommend that our product is disassembled as much as possible at the disposal and that you try to recycle it. LINAK systems or components should be disposed of in accordance with the environmental regulations applicable in the respective country.

Almost all our cast plastic parts are supplied with an interior code for plastic type and fibre contents, if any.

Repairs

Systems should only be repaired by an authorised LINAK service centre or engineer. Systems to be repaired under warranty must be sent to an authorised LINAK service centre.



Warning!

By unauthorised opening of the system there is a risk that it may malfunction at a later date.

Accessories and spare parts

Accessories

Order from your nearest LINAK® sales office, distributor or subsidiary.

Spare parts

Please contact your nearest LINAK sales office for information on spare parts.

Contacts

FACTORIES

Denmark - Headquarters
LINAK A/S
Phone: +45 73 15 15 15
Fax: +45 74 45 80 48
Fax (Sales): +45 73 15 16 13
Web: www.linak.com

China
LINAK (Shenzhen) Actuator Systems, Ltd.
Phone: +86 755 8610 6656
Phone: +86 755 8610 6990
Web: www.linak.cn

Slovakia
LINAK Slovakia s.r.o.
Phone: +421 51 7563 444
Web: www.linak.sk

Thailand
LINAK APAC Ltd.
Phone: +66 33 265 400
Web: www.linak.com

USA
LINAK U.S. Inc.
Americas Headquarters
Phone: +1 502 253 5595
Fax: +1 502 253 5596
Web: www.linak-us.com
www.linak-latinamerica.com

SUBSIDIARIES

Australia
LINAK Australia Pty. Ltd
Phone: +61 3 8796 9777
Fax: +61 3 8796 9778
E-mail: sales@linak.com.au
Web: www.linak.com.au

Austria
LINAK Zweigniederlassung - Österreich (Wien)
Phone: +43 (1) 890 7446
Fax: +43 (1) 890 744615
E-mail: info@linak.de
Web: www.linak.at - www.linak.hu

Belgium
LINAK Actuator-Systems NV/SA
(Belgium & Luxembourg)
Phone: +32 (0)9 230 01 09
E-mail: beinfo@linak.be
Web: www.linak.be - www.fr.linak.be

Brazil
LINAK Do Brasil Comércio De Atuadores Ltda.
Phone: +55 (11) 2832 7070
Fax: +55 (11) 2832 7060
E-mail: info@linak.com.br
Web: www.linak.com.br

Canada
LINAK Canada Inc.
Phone: +1 502 253 5595
Fax: +1 416 255 7720
E-mail: info@linak.ca
Web: www.linak-us.com

Czech Republic
LINAK C&S s.r.o.
Phone: +42 058 174 1814
Fax: +42 058 170 2452
E-mail: info@linak.cz
Web: www.linak.cz - www.linak.sk

Denmark - International
LINAK International
Phone: +45 73 15 15 15
E-mail: info@linak.com
Web: www.linak.com

Denmark - Sales
LINAK Danmark A/S
Phone: +45 86 80 36 11
Fax: +45 86 82 90 51
E-mail: linak@linak-silkeborg.dk
Web: www.linak.dk

Finland
LINAK OY
Phone: +358 10 841 8700
E-mail: linak@linak.fi
Web: www.linak.fi

France
LINAK France E.U.R.L
Phone: +33 (0) 2 41 36 34 34
Fax: +33 (0) 2 41 36 35 00
E-mail: linak@linak.fr
Web: www.linak.fr

Germany
LINAK GmbH
Phone: +49 6043 9655 0
Fax: +49 6043 9655 60
E-mail: info@linak.de
Web: www.linak.de

India
LINAK A/S India Liaison Office
Phone: +91 120 4531797
Fax: +91 120 4786428
E-mail: info@linak.in
Web: www.linak.in

Italy
LINAK ITALIA S.r.l.
Phone: +39 02 48 46 33 66
Fax: +39 02 48 46 82 52
E-mail: info@linak.it
Web: www.linak.it

Japan
LINAK K.K.
Phone: 81-45-533-0802
Fax: 81-45-533-0803
E-mail: linak@linak.jp
Web: www.linak.jp

Malaysia
LINAK Actuators Sdn. Bhd.
Phone: +60 4 210 6500
Fax: +60 4 226 8901
E-mail: info@linak-asia.com
Web: www.linak.my

Netherlands
LINAK Actuator-Systems B.V.
Phone: +31 76 5 42 44 40 /
+31 76 200 11 10
E-mail: info@linak.nl
Web: www.linak.nl

New Zealand
LINAK New Zealand Ltd
Phone: +64 9580 2071
Fax: +64 9580 2072
E-mail: nzsales@linak.com.au
Web: www.linak.com.au

Norway
LINAK Norge AS
Phone: +47 32 82 90 90
E-mail: info@linak.no
Web: www.linak.no

Poland
LINAK Polska
LINAK Danmark A/S (Spółka Akcyjna)
Phone: +48 22 295 09 70 /
+48 22 295 09 71
E-mail: info@linak.pl
Web: www.linak.pl

Republic of Korea
LINAK Korea Ltd.
Phone: +82 2 6231 1515
Fax: +82 2 6231 1516
E-mail: info@linak.kr
Web: www.linak.kr

Slovakia
LINAK Slovakia S.R.O.
Phone: +421 51 7563 444
Web: www.linak.sk

Spain
LINAK Actuadores, S.L.U
Phone: +34 93 588 27 77
Fax: +34 93 588 27 85
E-mail: esma@linak.es
Web: www.linak.es

Sweden
LINAK Scandinavia AB
Phone: +46 8 732 20 00
Fax: +46 8 732 20 50
E-mail: info@linak.se
Web: www.linak.se

Switzerland
LINAK AG
Phone: +41 43 388 31 88
Fax: +41 43 388 31 87
E-mail: info@linak.ch
Web: www.linak.ch - www.fr.linak.ch
www.it.linak.ch

Taiwan
LINAK (Shenzhen) Actuator systems Ltd.
Taiwan Representative office
Phone: +886 2 272 90068
Fax: +886 2 272 90096
E-mail: sales@linak.com.tw
Web: www.linak.com.tw

Turkey
LINAK İth. İhr. San. ve Tic. A.Ş.
Phone: +90 312 4726338
Fax: +90 312 4726635
E-mail: info@linak.com.tr
Web: www.linak.com.tr

United Kingdom & Ireland
LINAK UK Limited
Phone: +44 (0)121 544 2211
Fax: +44 (0)121 544 2552
E-mail: sales@linak.co.uk
Web: www.linak.co.uk

DISTRIBUTORS

Argentina
Novotec Argentina SRL
Phone: 011-4303-8989 / 8900
Fax: 011-4032-0184
E-mail: info@novotecargentina.com
Web: www.novotecargentina.com

Colombia
MEM Ltda
Phone: +[57] (1) 334-7666
Fax: +[57] (1) 282-1684
E-mail: servicioalcliente@memlda.com.co
Web: www.mem.net.co

India
Mechatronics Control Equipments India Pvt Ltd
Phone: +91-44-28558484, 85
E-mail: bala@mechatronicscontrol.com
Web: www.mechatronicscontrol.com

Indonesia
PT. Himalaya Everest Jaya
Phone: +6 221 544 8956 /+6 221 544 8965
Fax: +6 221 619 1925
Fax (Sales): +6 221 619 4658
E-mail: hejplastic-div@centrin.net.id
Web: www.hej.co.id

Israel
NetivTech LTD
Phone: +972 55-2266-535
Fax: +972 2-9900-560
Email: info@NetivTech.com
Web: www.netivtech.com

Singapore
Servo Dynamics Pte Ltd
Phone: +65 6844 0288
Fax: +65 6844 0070
E-mail: servodynamics@servo.com.sg

South Africa
Industrial Specialised Applications CC
Phone: +27 011 466 0346
E-mail: gartht@isagroup.co.za
Web: www.isaza.co.za

United Arab Emirates
Mechatronics
Phone: +971 4 267 4311
Fax: +971 4 267 4312
E-mail: mechtron@emirates.net.ae

Terms of use

LINAK® takes great care in providing accurate and up-to-date information on its products. However, the user is responsible for determining the suitability of LINAK products for a specific application. Due to continual development, LINAK products are subject to frequent modifications and changes. LINAK reserves the rights to conduct modifications, updates, and changes without any prior notice. For the same reason, LINAK cannot guarantee the correctness and actual status of imprinted information on its products.

LINAK uses its best efforts to fulfil orders. However, for the reasons mentioned above, LINAK cannot guarantee availability of any particular product at any given time. LINAK reserves the right to discontinue the sale of any product displayed on its website or listed in its catalogues or in other written material created and produced by LINAK, LINAK subsidiaries, or LINAK affiliates. All sales are subject to the 'Standard Terms of Sale and Delivery for LINAK A/S' available on LINAK websites. LINAK and the LINAK logotype are registered trademarks of LINAK A/S. All rights reserved.