



Built-in DB6 Data sheet

Built-in DB6

The DESKLIFT DB6 is a built-in actuator specially made for desks with a high adjustment range.

The DB6 (DESKLINE® Built-in) is a three part telescopic actuator that is designed with a slim metal motor housing to achieve a very low installation dimension.

The DB6 built-in actuator is specially designed for easy integration in the customer's guidance, to achieve the optimum freedom of design for desk applications.

LINAK fulfils even the strongest European standards that demand a range of adjustment from 600 mm up to 1200 mm.

The DB6 can either run as a single, 2, 3 or 4 parallel system. The parallel drive is ensured by means of special software in the control box that also compensates for an uneven load on the desk. The control box is designed with a soft start/stop function.



Features:

- Motor housing with integrated plug for connection to control box with a separate DESKLINE® motor cable
- Max. thrust 800 N per column
- Max. speed: 38 mm/sec. unloaded
- Standard stroke length 650 mm
- Standard installation dimension 530 mm
- Dimension square outer profile 30 x 30 mm
- Dimension motor housing 177 x 97 x 46 mm
- Bending moment is transferred to the customer's guidance
- Hall sensor (enables parallel drive with control box)
- Low noise level.
- Brake single acting as LA31
- Colour: Black motor housing and aluminium square tube

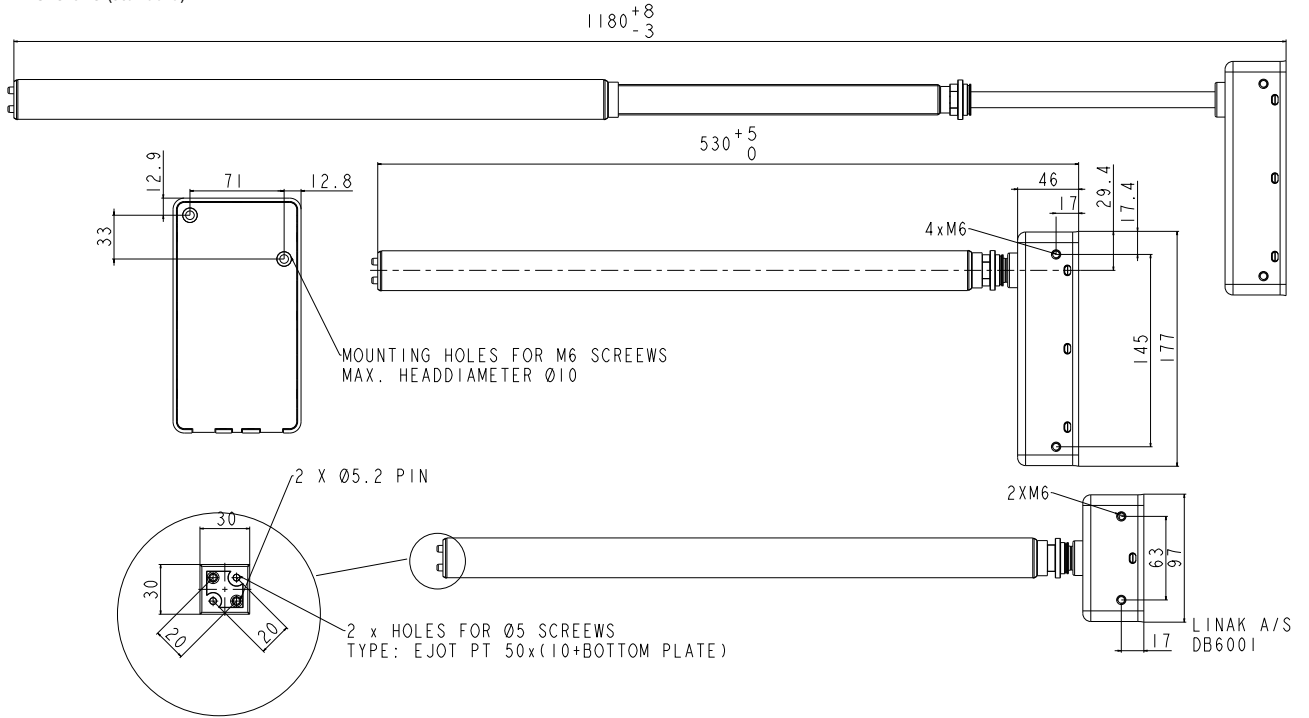
Usage:

- Duty cycle: 10 % ~ 6 minutes per hour or 2 minutes at continuous use at full load
- Ambient temperature: +10°C to +40°C
- Compatible with DESKLINE® control boxes CBD4 and CBD6S
- Compatible with all DESKLINE® controls
- Approved according to EN60335-1 and UL962

Technical specifications :

Type	Max. Thrust pr. DB (N)	Self-lock pr. DB (N)	Speed at 0 load (mm/s)	Duty cycle (%)	Spindle pitch (mm)
DB6	800	800	38	10	20

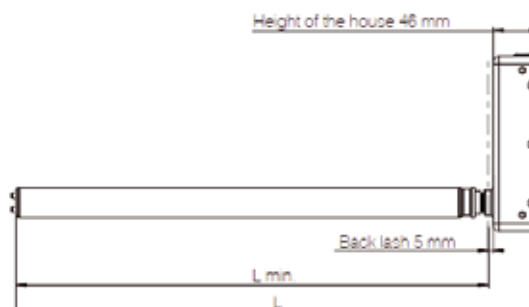
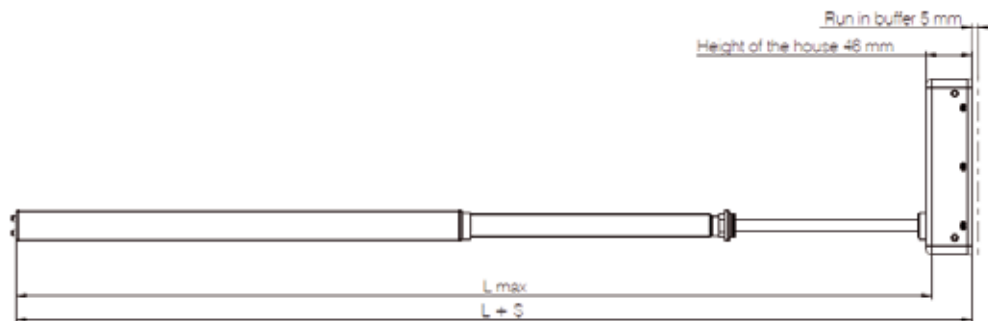
Dimensions (standard):



The end-stop system in the DB6 is based on a buffer system meaning that you must be aware of the lengths when initialising. The products must be able to drive:

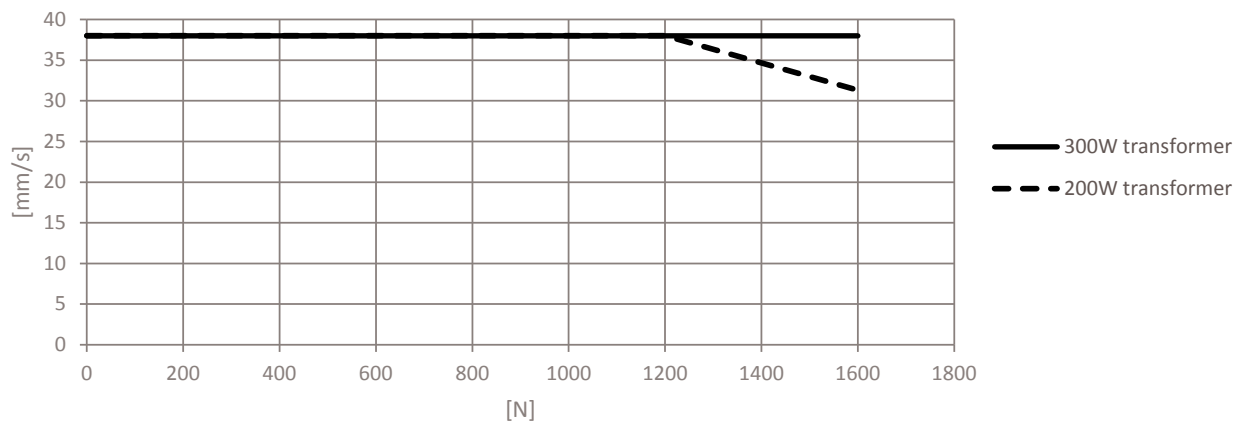
Inwards direction: built-in dimension - tolerances - 5 mm

Outwards direction: built-in dimension + stroke length + tolerances + 5 mm

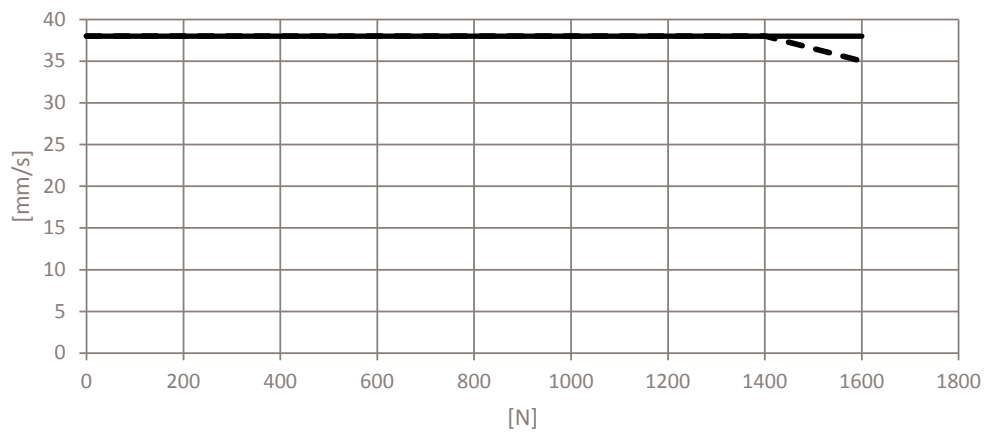


Curves for DB6

2 x DB5/DB6 (equally loaded) with CBD4



2 x DB5/DB6 (equally loaded) with CBD6S

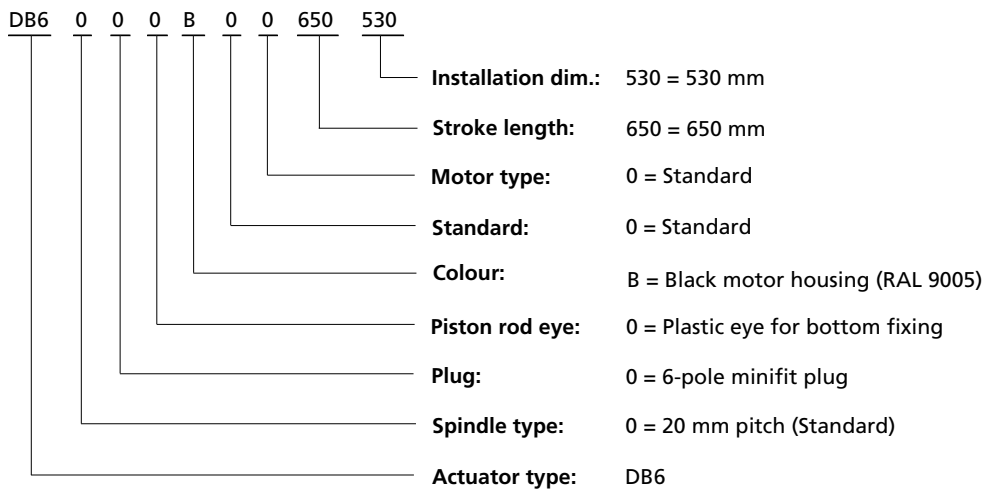


Above data is measured in connection with two DESKLINE DB5 and DESKLINE control box.
The desk is driving upwards.

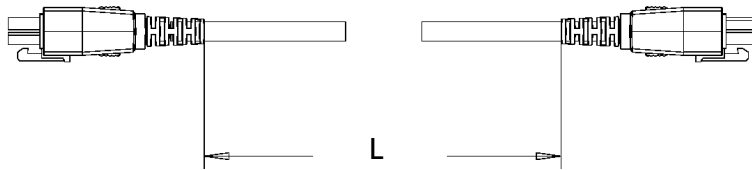


The above curve applies to a centrally placed load. At moment load there will be an increased friction in the customer's guidance, which will reduce the lifting force correspondingly.

Ordering example:



Motor cable:



Motor cables must be ordered separately.

Ordering numbers	Description
0617102-0200	L = 200 mm black motor cable, PVC free
0617102-0500	L = 500 mm black motor cable, PVC free
0617102-1000	L = 1000 mm black motor cable, PVC free
0617102-1550	L = 1550 mm black motor cable, PVC free
0617110-2000	L = 2000 mm black motor cable, PVC free
0617110-2500	L = 2500 mm black motor cable, PVC free

Terms of use

The user is responsible for determining the suitability of LINAK products for specific application. LINAK takes great care in providing accurate and up-to-date information on its products.

However, due to continuous development in order to improve its products, LINAK products are subject to frequent modifications and changes without prior notice. Therefore, LINAK cannot guarantee the correct and actual status of said information on its products.

While LINAK uses its best efforts to fulfill orders, LINAK cannot, for the same reasons as mentioned above, guarantee the availability of any particular product. Therefore, LINAK reserves the right to discontinue the sale of any product displayed on its website or listed in its catalogues or other written material drawn up by LINAK.

All sales are subject to the Standard Terms of Sale and Delivery for LINAK. For a copy hereof, please contact LINAK.