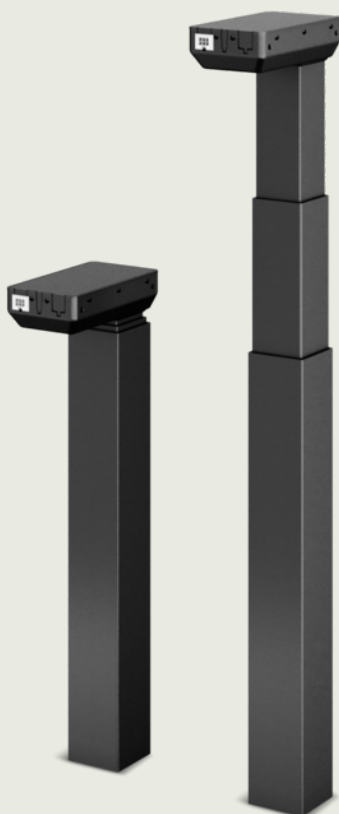


DL19

Data Sheet





The DESKLIFT™ DL19 is a three-part lifting column with square profiles and a motor housing. It is a perfect choice for a wide range of different desk applications ranging from industry to office desks. The DL19 has the same outer dimensions (70 x 70 mm) and motor-housing mounting holes as the two-part DL18 column, which makes them fit the same top frame and foot constructions, including the Kick & Click™ top frame. The three-part construction ensures a short installation dimension combined with a long stroke length making the DL19 an optimum choice no matter what the height of the person using the desk is. The middle profile of the DL19 moves synchronously so the profiles are always in the same height optimising the desk design and the stability. The DL19 has a compact motor housing, which is almost invisible in the tabletop construction, and the column is very sturdy. The DL19 is available in several standard colours to fit into a wide range of desk designs.

The wide DL19 product programme offers various options such as:

- PLUS™ - a design-optimised version - optionally available with trim rings in black, grey or white for optimised appearance
- PLUS™ versions prepared for Click-on Feet
- PLUS™ High-speed - fast height adjustment and optimised design
- PLUS™ High-speed XL - fast height adjustment, optimised design, and long stroke length
- PIEZO™ (collision protection) minimising the risk of damage to a desk caused by collision with an obstacle
- versions for bench solutions

The columns are controlled by a DESKLINE® control box (CBD). The control box ensures optimal parallel drive and a pleasantly low sound level. Depending on the control box, the columns can be used as a single column or with 2, 3 or 4 columns in parallel systems, or up to 16 columns in multi-parallel systems. A variety of desk panels can be used for adjusting the desk. A Desk Sensor™ 1 anti-collision dongle can be plugged into the control box to limit material damage to the desk or an object in case a collision occurs during driving of the desk.

Features/Options/Compatibility/Usage

Features

- Three-part motor housing column
- In combination with CBD6S:

Parameter	With CBD6S (300 W or 200 W)	
	300 W	200 W
Max. speed (unloaded)	38 mm/s	23 mm/s
Max. load (per column)	800 N	1200 N
Self-lock (per column)	800 N	1200 N

- Installation dimension: 560 mm
518 mm (BIFMA)
- Stroke length: 650 mm
665 mm (BIFMA)
- Weight: Approximately 8.5 kg per column
- Dimensions column: 70 x 70 mm (see also [Dimension drawings](#)).
- Dimension motor housing: 177 x 97 x 46 mm
- Four M6 and two M8 threaded holes in bottom plate for mounting of feet
- Colour: Available in black (RAL 9005), silver grey (RAL 9006) or white (RAL9016)
- Low sound level

Options

- PIEZO™: Integrated sensor minimising the risk for damage to a desk caused by squeezing or blocking it in upward or downward direction
- PLUS™ columns:
 - Invisible gliding pads and a smooth outer profile with no punch marks
 - Available with standard bracket
 - Available with trim rings in black, grey or white
 - Prepared for Click-on Feet
- PLUS™ columns available as high-speed variants for fast height adjustment (in combination with CBD6S with software SW03002024 version 1.03 or newer)

Parameter	With CBD6S (300 W)	With CBD6S (200 W)
Max. speed (unloaded)	80 mm/s	60 mm/s
Max. load (per column)	700 N	
Self-lock (per column)	1200 N	

- High-speed XL: PLUS™ High-speed columns are available in variants with long stroke length

Parameter	With CBD6S (300 W)	With CBD6S (200 W)
Max. speed (unloaded)	80 mm/s	60 mm/s
Built-in dimension	785 mm	
Stroke length	1100 mm	
Max. load (per column)	600 N	
Self-lock (per column)	1200 N	
Bending moment	My = max. 100 Nm dynamic	

- Available with bench bracket (two versions) and with mounting bracket for a crossbar, see [Dimension drawings](#)
- Customised colours
- Available as DESKLIFT™ SetPack

Compatibility

- DESKLINE® control boxes
- DESKLINE® controls
- Kick & Click™ top frame
- DESKLIFT™ Feet; PLUS™ columns also compatible with Click-on Feet

Usage

- Single or 2, 3 or 4 parallel drive or even multi-parallel with up to 16 columns
- Duty cycle: 10 % \approx max. 2 minutes continuous use at full load, followed by 18 minutes pause
- For indoor use in dry locations

Parameter	Operation	Storage and transportation
Temperature	10 to 40 °C	-10 to +50 °C
Relative humidity	20% to 80% - non-condensing	20% to 80% - non-condensing
Atmospheric pressure	800 to 1060 hPa	700 to 1060 hPa
Altitude	Max. 2000 m	N/A

For system compliance, please refer to the Declaration of Conformity in the [User Manual](#).

Ordering

DL19		
SPINDLE TYPE	0	0 = 20 mm pitch (Standard) 1 = 12 mm pitch (1200 N) 3 = 30 mm pitch (High-speed) *
TRIM RINGS	0	0 = No trim rings A = Grey trim rings ** B = Black trim rings ** D = White trim rings **
MOUNTING BRACKET	0	0 = None 1 = 120 x 40 x 8 mm (with 2 x M8) ** L = Bench bracket on left side R = Bench bracket on right side V = Bench bracket on left side *** H = Bench bracket on right side ***
COLOUR	B	A = Grey (RAL 9006) B = Black (RAL 9005) D = White (RAL 9016)
DESIGN	P	0 = Standard P = PLUS series Z = PLUS columns prepared for Click-on Foot
MOTOR TYPE	0	0 = Standard E = PIEZO T = High-speed **** V = High-speed + PIEZO ****
STROKE LENGTH	650	650 = 650 mm 665 = 665 mm (BIFMA) 1100 = 1100 mm (High-speed XL) *
INSTALLATION DIM.	560	560 = 560 mm 518 = 518 mm (BIFMA) 785 = 785 mm (High-speed XL) *
DL19000BP0650560		

*: Always with motor type option T or V

** : Only available with PLUS™ columns

*** : Columns with bench bracket compatible with the LINAK cross member set for a complete bench solution.
Cross members must be ordered separately

**** : Always with PLUS™ columns and spindle type 30 mm pitch



All cables for creating a fully connected DESKLINE® system must be ordered separately. We offer a range of different versions and lengths. To get information such as ordering number, and colour and length of the cables, please contact your local LINAK.



If you want to operate a 1200 N column **without** PIEZO™ with a desk panel with display, you must configure the actuator type in the control box to ensure the correct read-out.

If you want to operate a 1200 N column **with** PIEZO™, do not configure the actuator type. This column has IID and will automatically be detected as the right type of column.



A column in BIFMA version is less stable in the full stroke length compared to a standard column as it has less overlap between the profiles.

Technical data

Performance curves

The following data is measured in connection with 2 to 4 lifting columns and control box CBD6S. The desk is driving upwards.



The curves below apply to a centrally placed load. With moment load, there will be increased friction in the columns, which will reduce the lifting force correspondingly.

DL19 800 N (20 mm spindle)

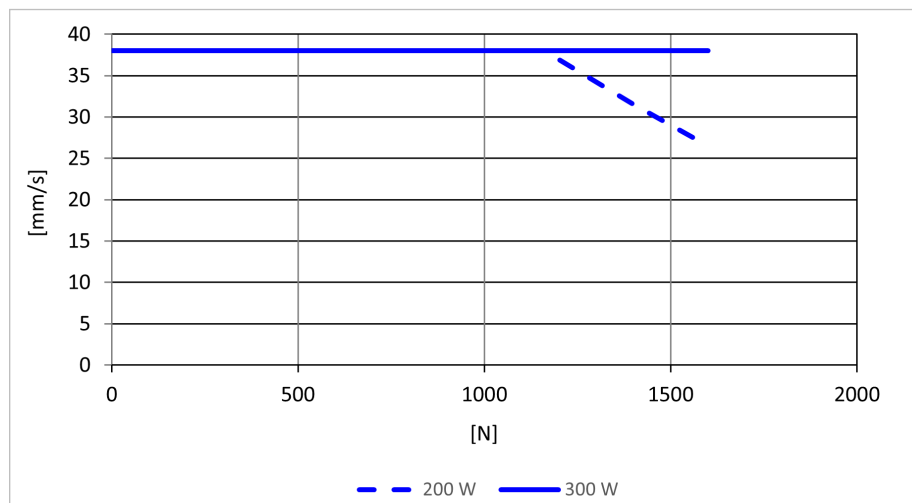


Figure 1 Two columns (equally loaded) - 200 W / 300 W

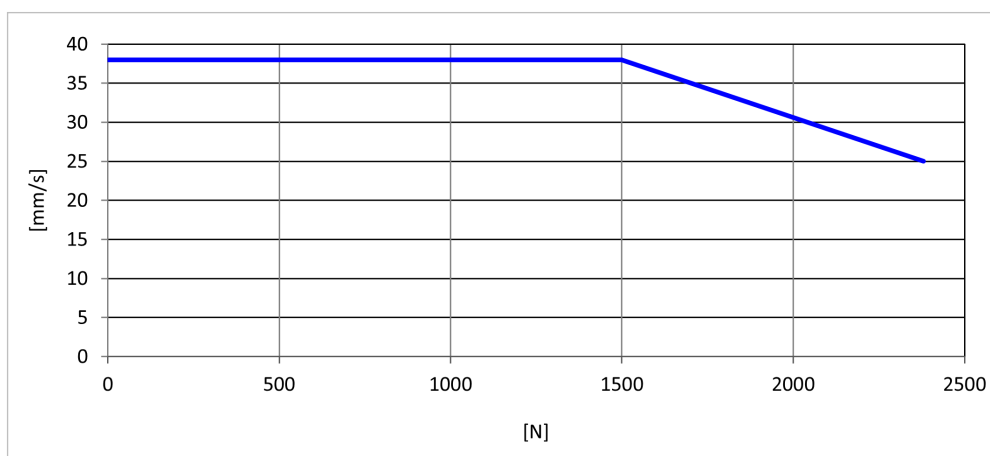


Figure 2 Three columns (equally loaded) with CBD6S - 300 W

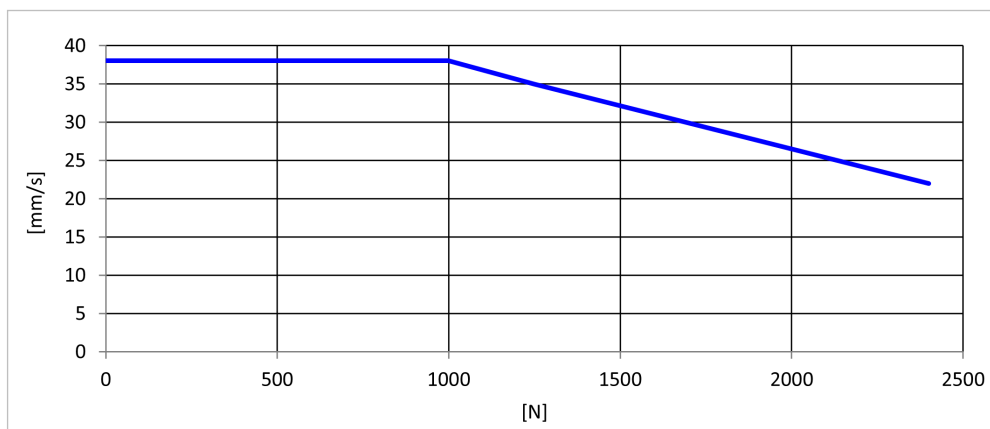


Figure 3 Four columns (equally loaded) with CBD6S - 300 W

High-speed columns with CBD6S

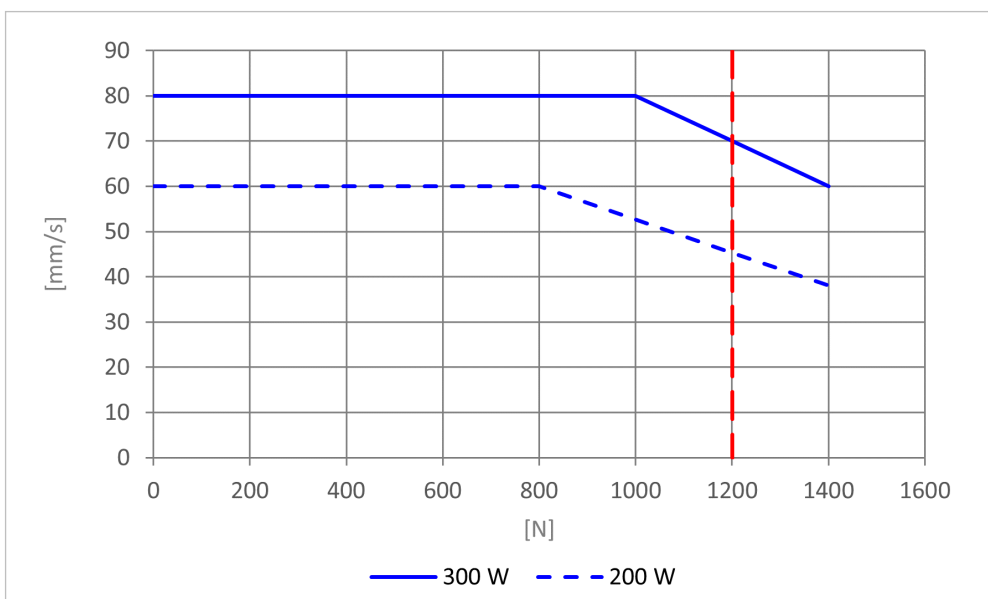


Figure 4 Two High-speed columns (equally loaded) with CBD6S - 200 W / 300 W

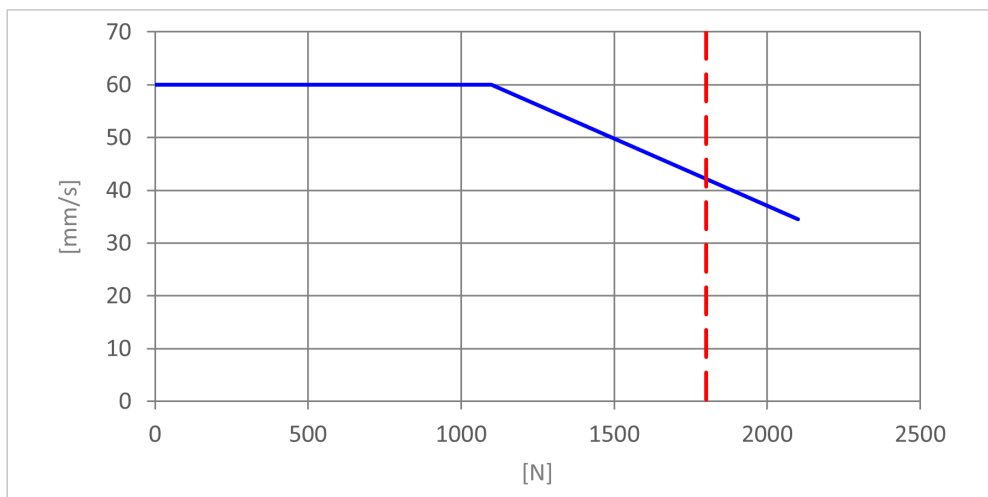


Figure 5 Three High-speed columns (equally loaded) with CBD6S - 300 W

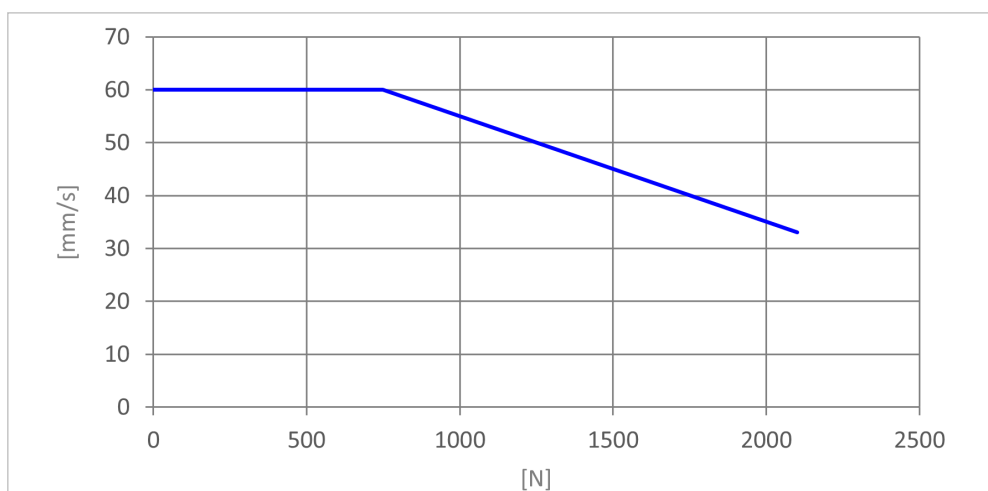


Figure 6 Four High-speed columns (equally loaded) with CBD6S - 300 W



The vertical dotted line indicates the maximum load for High-speed XL columns.

DL19 1200 N (12 mm spindle) with CBD6S

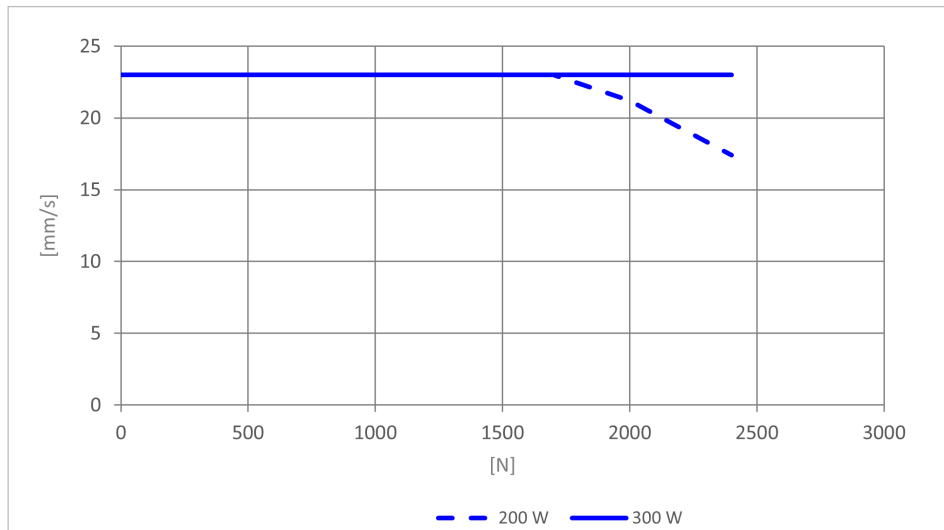


Figure 7 Two columns (equally loaded)

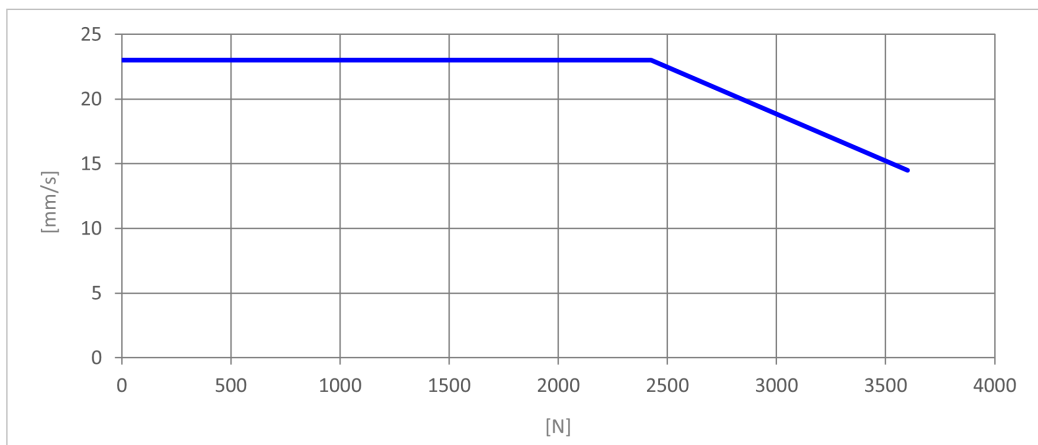


Figure 8 Three columns (equally loaded) with CBD6S - 300 W

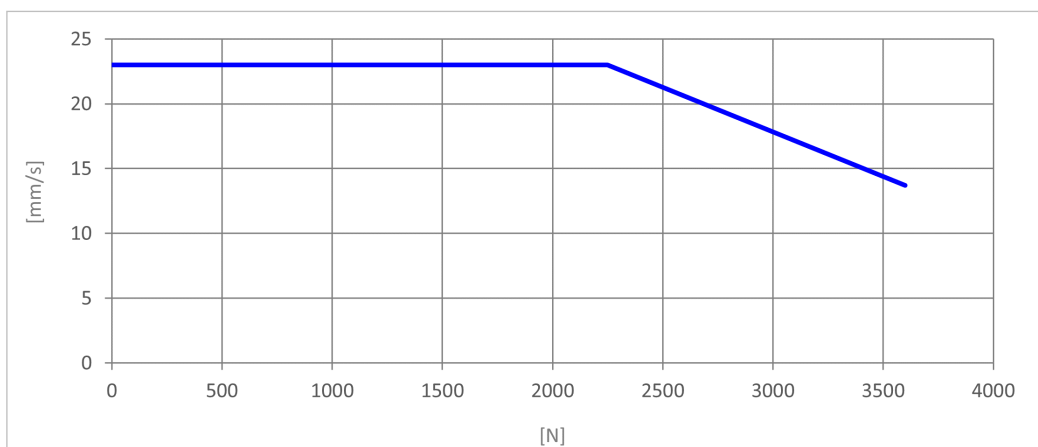


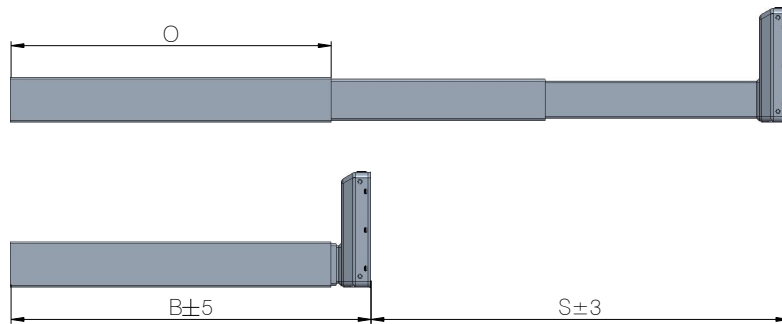
Figure 9 Four columns (equally loaded) with CBD6S - 300 W

Dimension drawings



All dimensions are in mm.

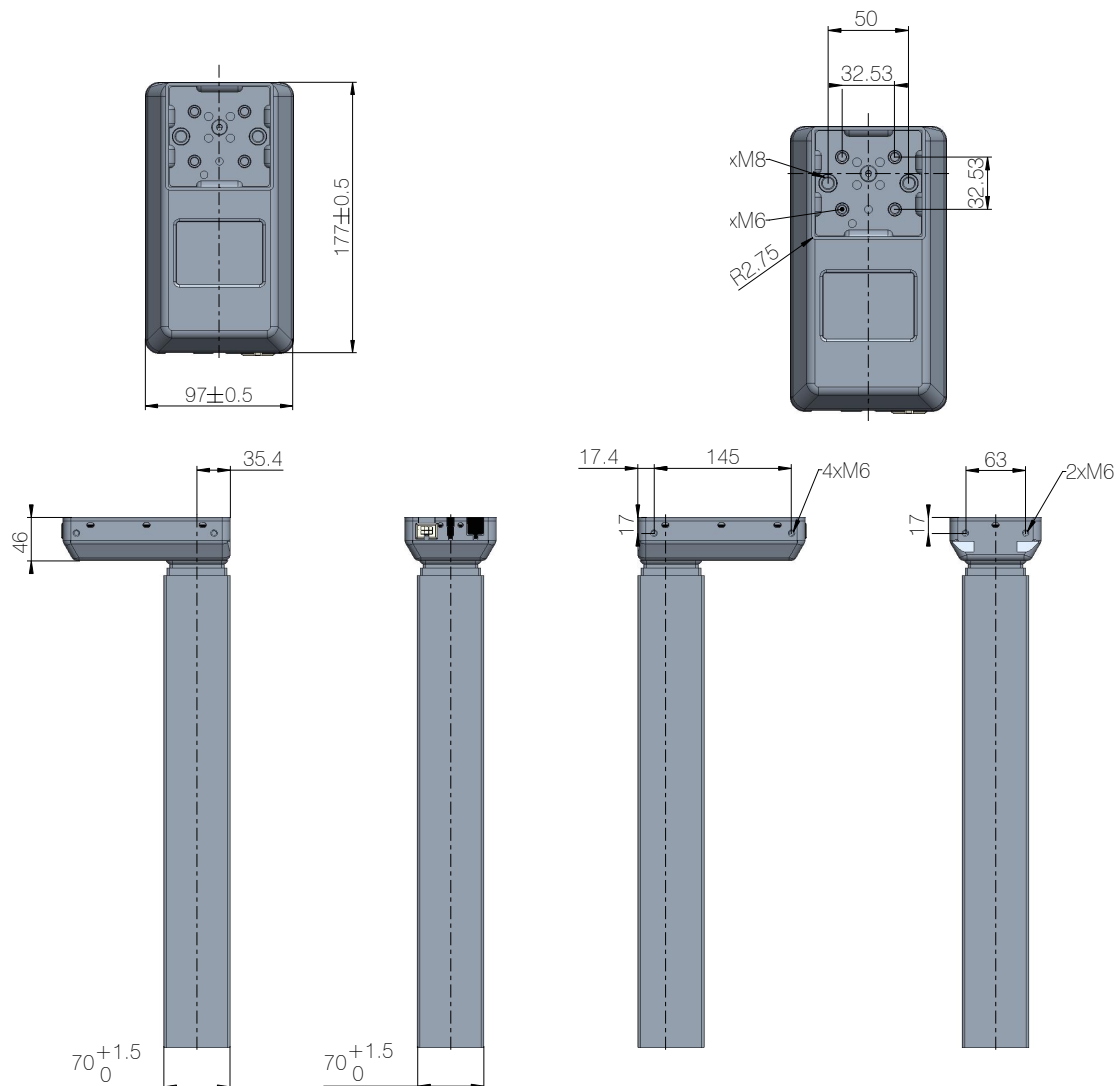
Columns



Drawing no. 1029W7901

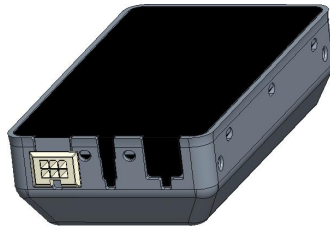
Version	Combination code	B (Built-in length)	S (Stroke length)	O (Outer profile length)
Standard	DL19xxxxx650560	560	650	498
BIFMA	DL19xxxxx665518	518	665	456
High-speed XL	DL193xxxPx1100785	785	1100	723

Figure 10 Built-in length, stroke length, and outer profile length



Drawing no. 1029W7901

Figure 11 Motor-housing, bottom plate, and profile

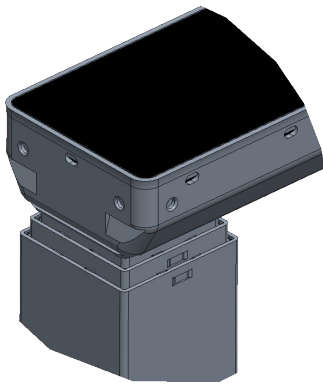


Standard

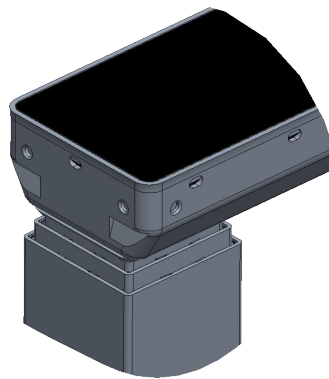
Drawing no. 1029W7901

Combination code	Type
DL19xxxxxxxxxxxx	Standard

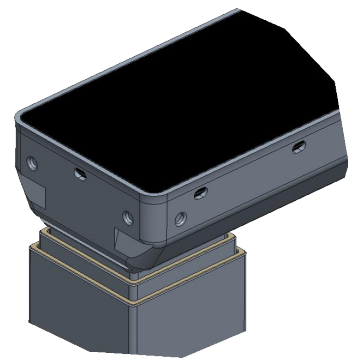
Figure 12 Socket combination



Standard



PLUS™ without trim rings

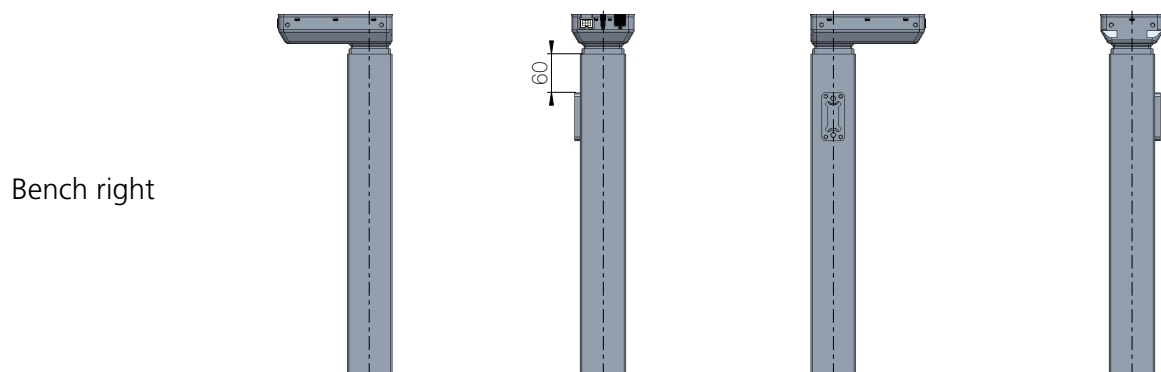
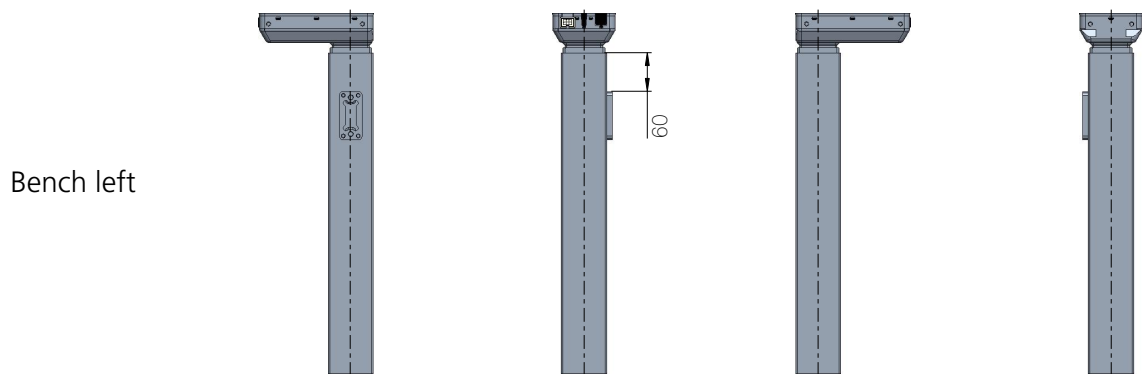
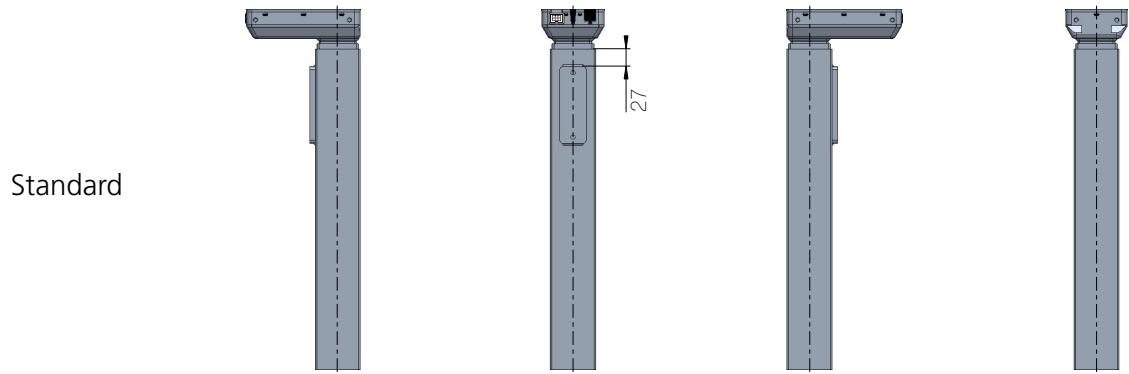


PLUS™ with trim rings

Drawing no. 1029W7901

Figure 13 Profile designs

Bracket options



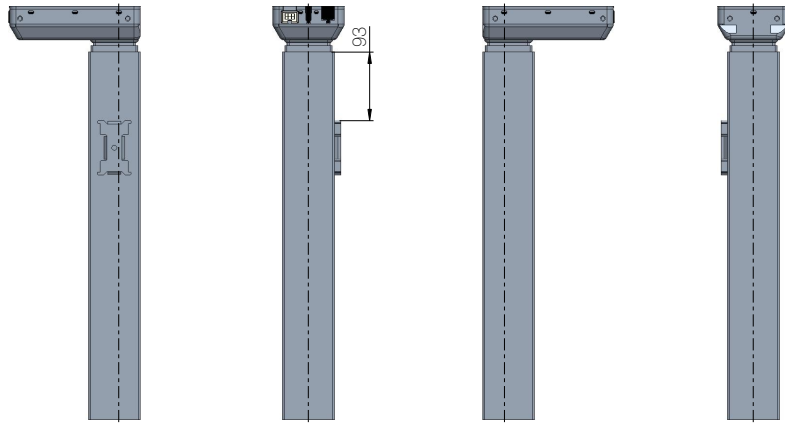
Drawing no. 1029W7901

Combination code	Standard	Bench left	Bench right
DL19xx1xPxxxxxxxx	X *		
DL19xxLxxxxxxxx		X	
DL19xxRxxxxxxxx			X

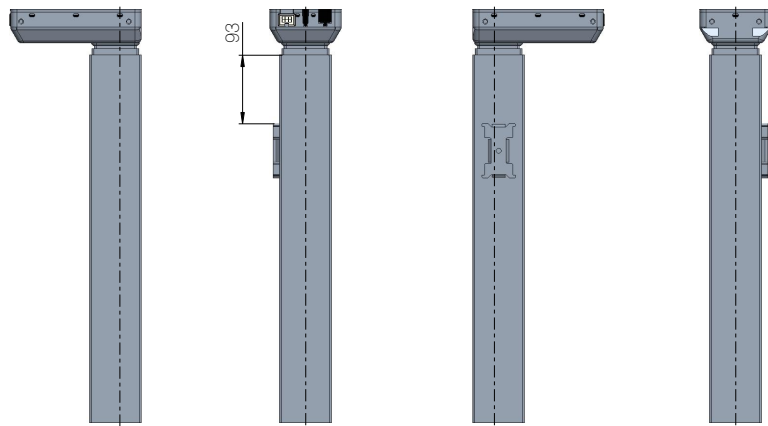
Figure 14 Bracket options (types standard, L and R)

* Available with PLUS™ columns

DESKLINE Bench left



DESKLINE Bench right



Drawing no. 1029W7901

Combination code	DESKLINE Bench left	DESKLINE Bench right
DL19xxVxPxxxxxxx	X *	
DL19xxHxPxxxxxxx		X *

Figure 15 DESKLINE Bench bracket options (types V and H)
(compatible with LINAK cross members)

* Available with PLUS™ columns

Brackets

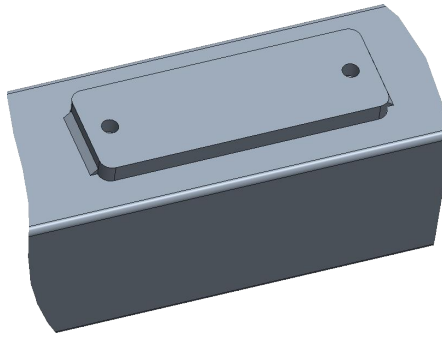


Figure 16 Standard bracket

Drawing no. 1029W7901

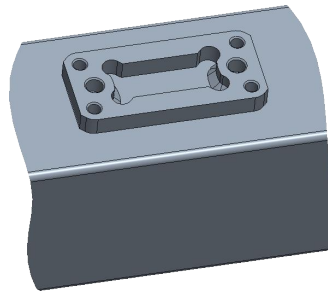


Figure 17 Bench bracket (type L and R)

Drawing no. 1029W7901

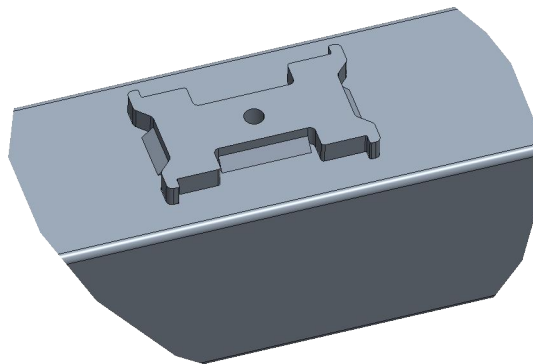
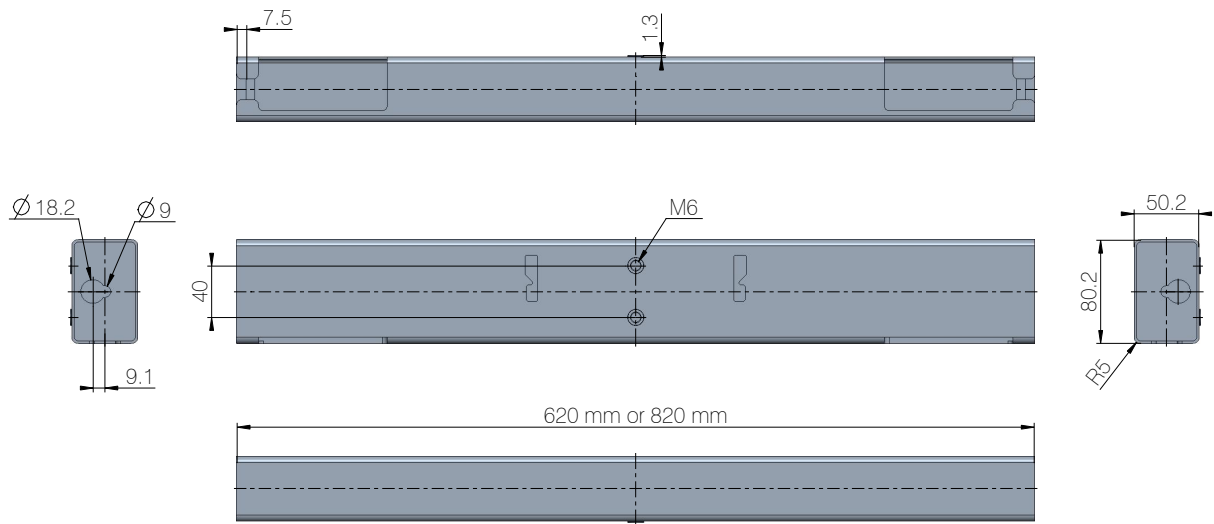


Figure 18 Bench bracket (type V and H) - compatible with LINAK cross members

Drawing no. 1029W7901

Cross members



Drawing no. 1066W4030

Figure 19 Cross member

Contacts

FACTORIES

Denmark - Headquarters
LINAK A/S
Phone: +45 73 15 15 15
Fax: +45 74 45 80 48
Fax (Sales): +45 73 15 16 13
Web: www.linak.com

China
LINAK (Shenzhen) Actuator Systems, Ltd.
Phone: +86 755 8610 6656
Phone: +86 755 8610 6990
Web: www.linak.cn

Slovakia
LINAK Slovakia s.r.o.
Phone: +421 51 7563 444
Web: www.linak.sk

Thailand
LINAK APAC Ltd.
Phone: +66 33 265 400
Web: www.linak.com

USA
LINAK U.S. Inc.
Americas Headquarters
Phone: +1 502 253 5595
Fax: +1 502 253 5596
Web: www.linak-us.com
www.linak-latinamerica.com

SUBSIDIARIES

Australia
LINAK Australia Pty. Ltd
Phone: +61 3 8796 9777
Fax: +61 3 8796 9778
E-mail: sales@linak.com.au
Web: www.linak.com.au

Austria
LINAK Zweigniederlassung - Österreich (Wien)
Phone: +43 (1) 890 7446
Fax: +43 (1) 890 744615
E-mail: info@linak.de
Web: www.linak.at - www.linak.hu

Belgium
LINAK Actuator-Systems NV/SA
(Belgium & Luxembourg)
Phone: +32 (0)9 230 01 09
E-mail: beinfo@linak.be
Web: www.linak.be - www.fr.linak.be

Brazil
LINAK Do Brasil Comércio De Atuadores Ltda.
Phone: +55 (11) 2832 7070
Fax: +55 (11) 2832 7060
E-mail: info@linak.com.br
Web: www.linak.com.br

Canada
LINAK Canada Inc.
Phone: +1 502 253 5595
Fax: +1 416 255 7720
E-mail: info@linak.ca
Web: www.linak-us.com

Czech Republic
LINAK C&S s.r.o.
Phone: +42 058 174 1814
Fax: +42 058 170 2452
E-mail: info@linak.cz
Web: www.linak.cz - www.linak.sk

Denmark - International
LINAK International
Phone: +45 73 15 15 15
E-mail: info@linak.com
Web: www.linak.com

Denmark - Sales
LINAK Danmark A/S
Phone: +45 86 80 36 11
Fax: +45 86 82 90 51
E-mail: linak@linak-silkeborg.dk
Web: www.linak.dk

Finland
LINAK OY
Phone: +358 10 841 8700
E-mail: linak@linak.fi
Web: www.linak.fi

France
LINAK France E.U.R.L
Phone: +33 (0) 2 41 36 34 34
Fax: +33 (0) 2 41 36 35 00
E-mail: linak@linak.fr
Web: www.linak.fr

Germany
LINAK GmbH
Phone: +49 6043 9655 0
Fax: +49 6043 9655 60
E-mail: info@linak.de
Web: www.linak.de

India
LINAK A/S India Liaison Office
Phone: +91 120 4531797
Fax: +91 120 4786428
E-mail: info@linak.in
Web: www.linak.in

Italy
LINAK ITALIA S.r.l.
Phone: +39 02 48 46 33 66
Fax: +39 02 48 46 82 52
E-mail: info@linak.it
Web: www.linak.it

Japan
LINAK K.K.
Phone: 81-45-533-0802
Fax: 81-45-533-0803
E-mail: linak@linak.jp
Web: www.linak.jp

Malaysia
LINAK Actuators Sdn. Bhd.
Phone: +60 4 210 6500
Fax: +60 4 226 8901
E-mail: info@linak-asia.com
Web: www.linak.my

Netherlands
LINAK Actuator-Systems B.V.
Phone: +31 76 5 42 44 40 /
+31 76 200 11 10
E-mail: info@linak.nl
Web: www.linak.nl

New Zealand
LINAK New Zealand Ltd
Phone: +64 9580 2071
Fax: +64 9580 2072
E-mail: nzsales@linak.com.au
Web: www.linak.com.au

Norway
LINAK Norge AS
Phone: +47 32 82 90 90
E-mail: info@linak.no
Web: www.linak.no

Poland
LINAK Polska
LINAK Danmark A/S (Spółka Akcyjna)
Phone: +48 22 295 09 70 /
+48 22 295 09 71
E-mail: info@linak.pl
Web: www.linak.pl

Republic of Korea
LINAK Korea Ltd.
Phone: +82 2 6231 1515
Fax: +82 2 6231 1516
E-mail: info@linak.kr
Web: www.linak.kr

Slovakia
LINAK Slovakia S.R.O.
Phone: +421 51 7563 444
Web: www.linak.sk

Spain
LINAK Actuadores, S.L.U
Phone: +34 93 588 27 77
Fax: +34 93 588 27 85
E-mail: esma@linak.es
Web: www.linak.es

Sweden
LINAK Scandinavia AB
Phone: +46 8 732 20 00
Fax: +46 8 732 20 50
E-mail: info@linak.se
Web: www.linak.se

Switzerland
LINAK AG
Phone: +41 43 388 31 88
Fax: +41 43 388 31 87
E-mail: info@linak.ch
Web: www.linak.ch - www.fr.linak.ch
www.it.linak.ch

Taiwan
LINAK (Shenzhen) Actuator systems Ltd.
Taiwan Representative office
Phone: +886 2 272 90068
Fax: +886 2 272 90096
E-mail: sales@linak.com.tw
Web: www.linak.com.tw

Turkey
LINAK İth. İhr. San. ve Tic. A.Ş.
Phone: +90 312 4726338
Fax: +90 312 4726635
E-mail: info@linak.com.tr
Web: www.linak.com.tr

United Kingdom & Ireland
LINAK UK Limited
Phone: +44 (0)121 544 2211
Fax: +44 (0)121 544 2552
E-mail: sales@linak.co.uk
Web: www.linak.co.uk

DISTRIBUTORS

Argentina
Novotec Argentina SRL
Phone: 011-4303-8989 / 8900
Fax: 011-4032-0184
E-mail: info@novotecargentina.com
Web: www.novotecargentina.com

Colombia
MEM Ltda
Phone: +[57] (1) 334-7666
Fax: +[57] (1) 282-1684
E-mail: servicioalcliente@memltda.com.co
Web: www.mem.net.co

India
Mechatronics Control Equipments India Pvt Ltd
Phone: +91-44-28558484, 85
E-mail: bala@mechatronicscontrol.com
Web: www.mechatronicscontrol.com

Indonesia
PT. Himalaya Everest Jaya
Phone: +6 221 544 8956 /+6 221 544 8965
Fax: +6 221 619 1925
Fax (Sales): +6 221 619 4658
E-mail: hejplastic-div@centrin.net.id
Web: www.hej.co.id

Israel
NetivTech LTD
Phone: +972 55-2266-535
Fax: +972 2-9900-560
Email: info@NetivTech.com
Web: www.netivtech.com

Singapore
Servo Dynamics Pte Ltd
Phone: +65 6844 0288
Fax: +65 6844 0070
E-mail: servodynamics@servo.com.sg

South Africa
Industrial Specialised Applications CC
Phone: +27 011 466 0346
E-mail: gartht@isagroup.co.za
Web: www.isaza.co.za

United Arab Emirates
Mechatronics
Phone: +971 4 267 4311
Fax: +971 4 267 4312
E-mail: mechtron@emirates.net.ae

Terms of use

LINAK® takes great care in providing accurate and up-to-date information on its products. However, the user is responsible for determining the suitability of LINAK products for a specific application. Due to continual development, LINAK products are subject to frequent modifications and changes. LINAK reserves the rights to conduct modifications, updates, and changes without any prior notice. For the same reason, LINAK cannot guarantee the correctness and actual status of imprinted information on its products.

LINAK uses its best efforts to fulfil orders. However, for the reasons mentioned above, LINAK cannot guarantee availability of any particular product at any given time. LINAK reserves the right to discontinue the sale of any product displayed on its website or listed in its catalogues or in other written material created and produced by LINAK, LINAK subsidiaries, or LINAK affiliates. All sales are subject to the 'Standard Terms of Sale and Delivery for LINAK A/S' available on LINAK websites. LINAK and the LINAK logotype are registered trademarks of LINAK A/S. All rights reserved.