



## CBH Advanced Data sheet

# CBH Advanced

The HOMELINE® control box family CBH is an optimum choice for a wide range of bed applications using linear actuators. The control box family features 2 boxes: the Basic control box for 2 channel solutions for economy beds and the Advanced control box featuring up to 3 channels for linear actuators and up to 2 channels e.g. for massage motors for beds offering more features and options.

The CBH has the same size whether it is a Basic or an Advanced control box and both versions are low power units. The CBH must be connected with an external power supply. From an environmental view, the CBH is a good choice as the CBH system has extremely low power consumption in standby mode: only 0.1W.

The CBH Advanced is compatible with the linear actuators LA27, LA31 and LA40, MD1 massage motors and wireless handsets. The external power supply can be the SMPS001 (EU), the SMPS002 (US) or the universal SMPS006. Optional the CBH Advanced features extra accessories like Under Bed Light or can be combined in parallel systems. The CBH Advanced is compatible with the Bluetooth Adapter, BLE2LIN, which makes it possible to wirelessly control your application via the Bed Control App.



## Features:

- Ultra compact and lightweight control box (169 mm x 77 mm x 41.5 mm, weight below 200 g)
- Colour: black
- 24V DC -30V DC unit  
Power supply via external switch mode power supply unit: SMPS001 (230V -24V output) or SMPS002 (120V -24V output) or universal SMPS006 (100 - 240V -29V output)
- White plugs for easy recognition when mounting / dismantling
- The power consumption in standby mode is only 0.1 W, this is what we call ZERO™
- Built-in RF receiver (Radio frequency)
- Memory
- The control box is designed with a soft start/stop function

## Options:

- Multi-parallel software, possible to connect 2 CBH Advanced boxes
- Configuration of different functions

## Accessories:

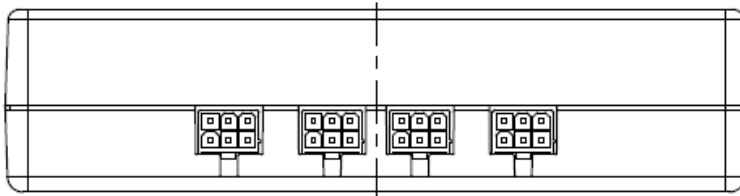
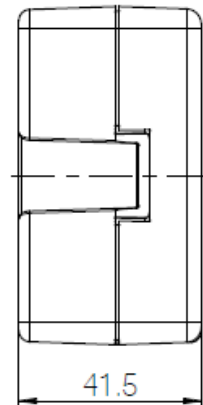
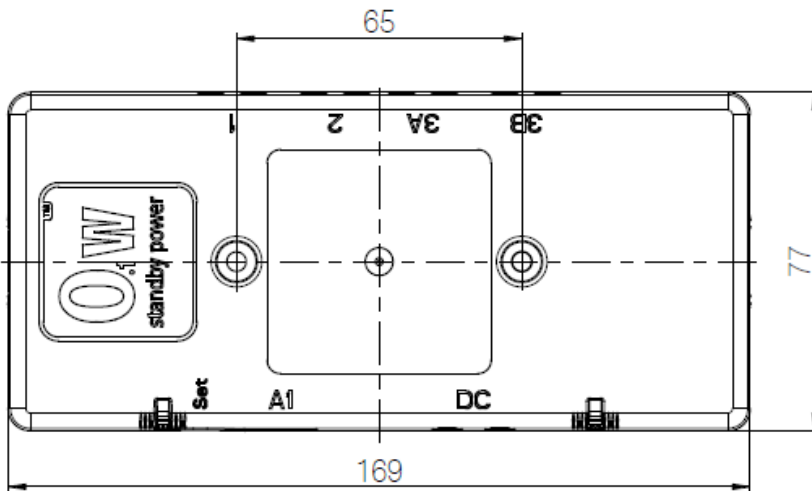
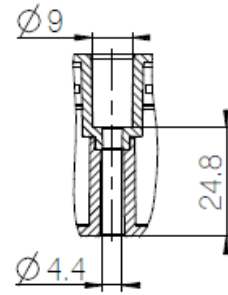
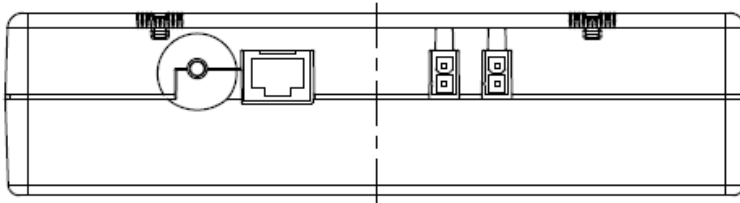
- Light plug 001 (for Under Bed Light)
- LED Light Rail (for Under Bed Light)
- Massage motors MD1
- DC Connector 001 (connect standard accessory with a DC plug)
- LEDlight001 (for Under Bed Light)
- Compatible with the BA001
- Compatible with the Bluetooth® Adapter for connecting the Bed Control App or Bluetooth® based hand controls.

## Usage:

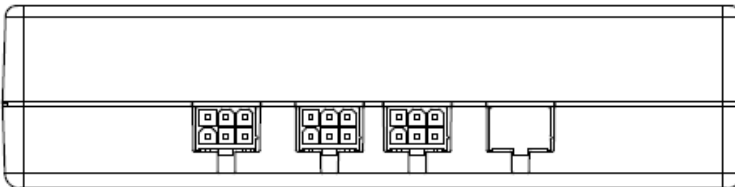
- The control box is compatible with 1, 2 or 3 linear actuators LA27, LA31 and LA40 with hall switches, up to 2 massage motors MD1, wireless handset HB22 or HC22
- Compatible with TD4 Advanced\*
- Duty cycle max. 10 % ~ 6 min. per hour or 2 min. at continuous use at full load followed by 18 min. pause
- CBH Advanced is approved according to EN 60335-1
- CBH is approved according to UL 962
- CBH 3CH will be approved according to KC

\* TD4 Advanced and CBH Advanced are compatible from following software versions: TD4 Advanced software 3002005 v 1.31 and CBH Advanced 3002001 v. 1.26 or later

**CBH Advanced dimensions**



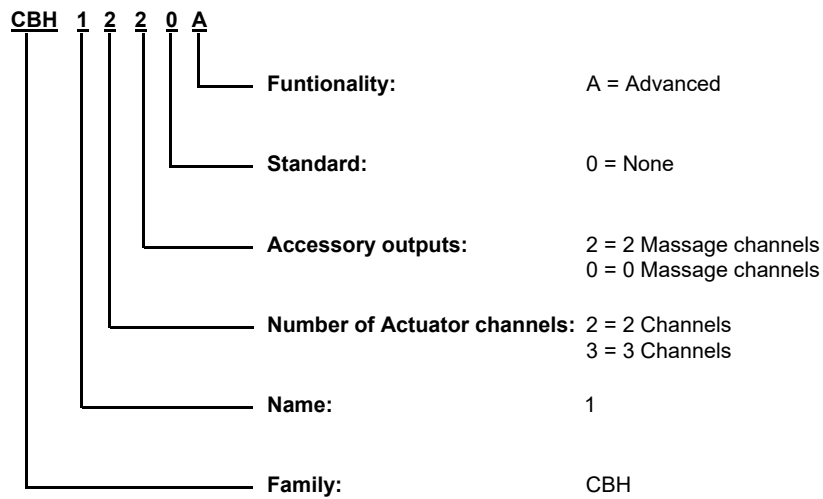
CBH 3CH has same dimensions as above, only the channel 3B is blocked:



**Abbreviations: (see drawing)**

- A1 = "RJ45 Handset port". Can be used for the Lightplug001 or serial connection of another CBH, configuration
- DC = Ports to connect the SMPS001, SMPS002, SMPS006 or BA001
- 1-2 = Sockets for 1-2 LA27, LA31 or LA40
- 3A-3B = Sockets for 1-2 MD1 (massage motors) or other accessory  
3A on CBH with 3 channels can also be used for an actuator.
- Set = The small learn button used for paring the CBH and wireless handset

**Ordering example:**



\*3 channels can only be combined with 0 message channels

The SMPS must be ordered separately:

SMPS001 = 230V version

SMPS002 = 120V version

SMPS006 = Universal input 100-240 V version

**Terms of use**

The user is responsible for determining the suitability of LINAK products for specific application. LINAK takes great care in providing accurate and up-to-date information on its products.

However, due to continuous development in order to improve its products, LINAK products are subject to frequent modifications and changes without prior notice. Therefore, LINAK cannot guarantee the correct and actual status of said information on its products.

While LINAK uses its best efforts to fulfill orders, LINAK cannot, for the same reasons as mentioned above, guarantee the availability of any particular product. Therefore, LINAK reserves the right to discontinue the sale of any product displayed on its website or listed in its catalogues or other written material drawn up by LINAK.

All sales are subject to the Standard Terms of Sale and Delivery for LINAK. For a copy hereof, please contact LINAK.