



# Attendant Control Panel ACP Data sheet

# ACP

---

The ACP (Attendant Control Panel) controller is used with advanced hospital and patient care beds where patient positioning must be carefully controlled by medical staff.

The ACP gives nursing staff direct control over critical positioning functions while giving the patient a limited degree of adjustment.

This high degree of selective control is vital with cases such as spinal injuries and other similar conditions where backrest positioning must be carefully supervised.

The ACP is ergonomically designed and easy to install on even the most advanced equipment.

The ACP is mounted out of reach of the patient (for example at the foot of the bed) and serves to block the handset functions that may be inappropriate or even dangerous for the patient (for example in connection with a broken leg).



---

## Features:

- Ergonomic and compact design
- High strength plastic housing protects the electronics
- DIN-socket for HB40 when connected with CB9 or CB12
- ACP with buttons can be used as an extra handset
- A lamp indicates when the battery is being charged (only for CB14, CB18)
- Available with or without buttons (the buttons function the same way as with a handset. To operate the ACP, two buttons must be activated at the same time, (for safety reasons)
- Protection class: IP51
- 2500 mm straight cable
- Colour: black

## Options:

- 500 mm coiled cable
- Customised front cover
- If front covers other than standards are requested, the customer must design them. The front covers designed by the customer can be made according to their own wishes including 2, 3 and 4 channels versions
- Protection class: IP65 or IP66 (for horizontal mounting)
- Colour: grey
- Wet-alarm possible on IP66 (ACP for CB18 only). ACP with wet alarm has to be mounted horizontally to ensure that the wet-alarm is activated if water enters the ACP

## Usage:

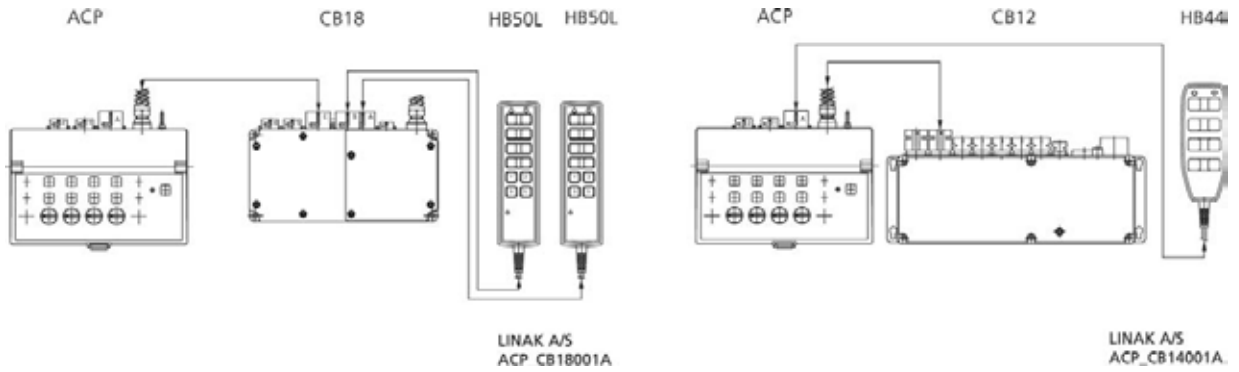
- Controls up to 6 channels in connection with CB18, 5 channels with CB14 and 4 channels with CB9 or CB12



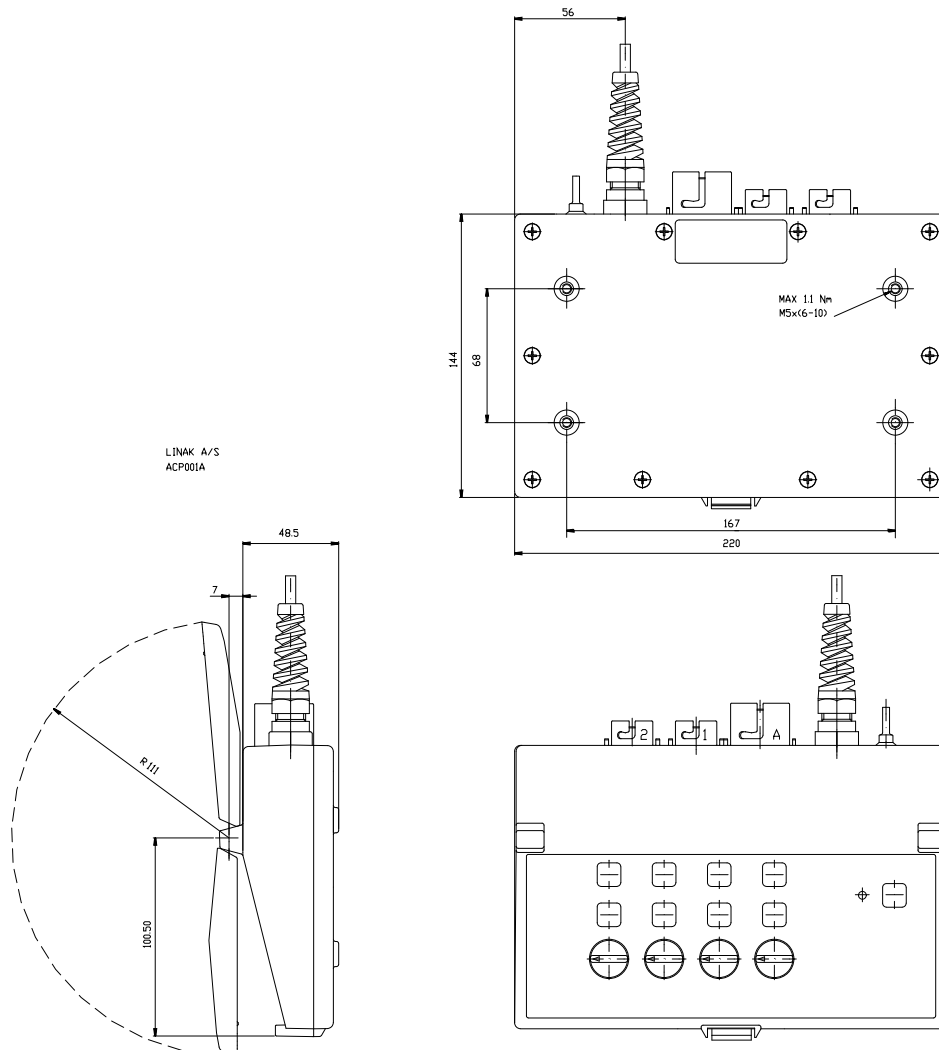
**Precautions:**

NB: CB12H/CB14 can only be connected with one handset (HB).

**How to connect the ACP box:**



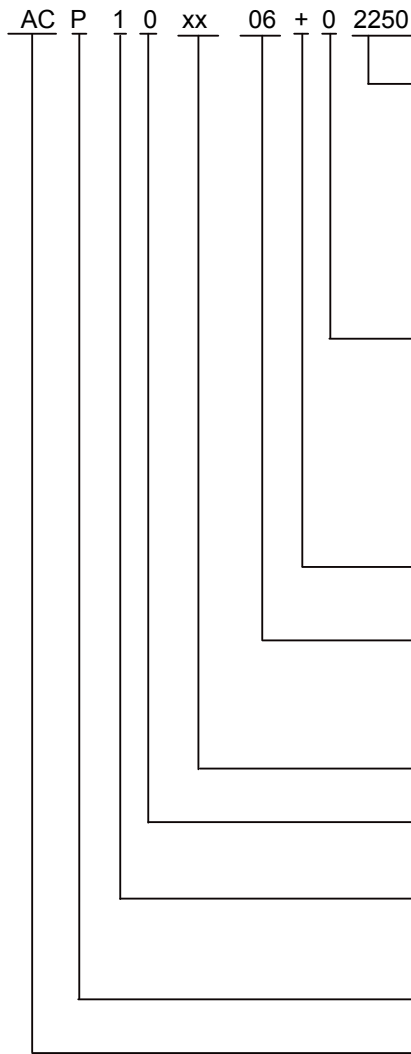
**Dimension:**



Drawing no.: ACP001A

# ACP

## Ordering example:



### Cable length:

		9-core		14-core	
		Black	Grey	Black	Grey
A	Straight	2250	2250	2250	2250
	Straight		3250		2750
C	Straight				0600
P	Coiled	0600	0600		0600
	Coiled/ Straight		0600/ 1600		

### Cable types:

		Grey		Black	
		D	0	Straight 9 core.	D
I	1	Straight 14 core.	I	6	Straight 14 core.
N	2	Coiled 9 core.	N	7	Coiled 9 core.
	3	Coiled 14 core.			
	4	Coiled 9 core extra long straight end			

**Box colour:** + = Grey - RAL7035  
- = Black

**Front cover:** 06  
22  
56  
65

**Functionality:** 50-96

**Charging indicator:** 0 = No  
1 = Yes

**IP Degree:** 1 IP51  
5 IP65  
6 IP66

**Plastic housing:** P = Big

**Type:** ACP

### Terms of use

The user is responsible for determining the suitability of LINAK products for specific application. LINAK takes great care in providing accurate and up-to-date information on its products. However, due to continuous development in order to improve its products, LINAK products are subject to frequent modifications and changes without prior notice. Therefore, LINAK cannot guarantee the correct and actual status of said information on its products. While LINAK uses its best efforts to fulfil orders, LINAK cannot, for the same reasons as mentioned above, guarantee the availability of any particular product. Therefore, LINAK reserves the right to discontinue the sale of any product displayed on its website or listed in its catalogues or other written material drawn up by LINAK. All sales are subject to the Standard Terms of Sale and Delivery for LINAK. For a copy hereof, please contact LINAK.