



# Attendant Control Lock ACL Data sheet

# ACL

---

The ACL (Attendant Control Lock) box is a one turn button box for various applications where the patient positioning must be carefully controlled by the medical staff.

The ACL disconnects all functions on the hand control either by means of turn button or turn key.

## Benefits when using ACL:

- No unintended operation of actuators
- Backward compatible, add-on
- Extended safety through "double click" function



---

## Features and options:

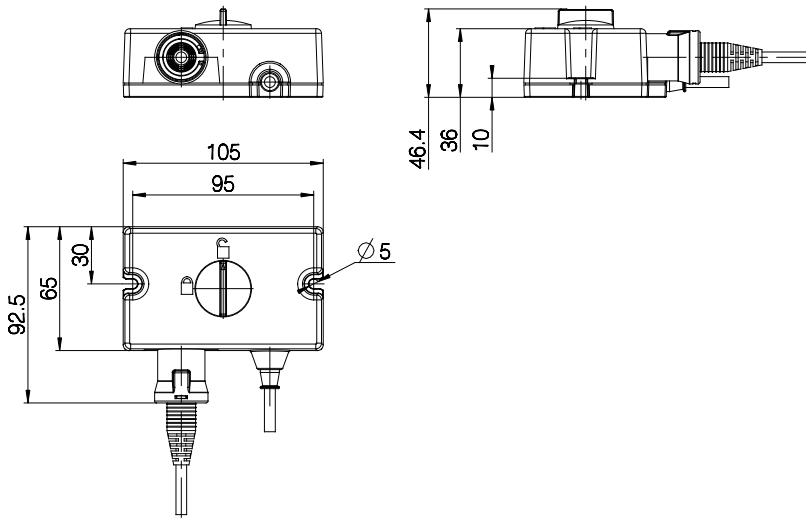
- Disconnects all channels in connection with CB6
- Functional and compact design
- High-strength plastic housing protects the electronics
- Protection class: IPX4
- 805 mm straight cable (only) as standard
- Available in light grey (RAL 7035) or dark grey (RAL 7016)
- Available with front:
  - ACL standard (dark grey or light grey)
  - ACL lock key (dark grey)
- Without front foil - plastic integrated padlock symbols
- ESF - Electronic Safety Function - especially for foot switch operation in connection with certain types of CB9 (DIN-plug)

## Usage:

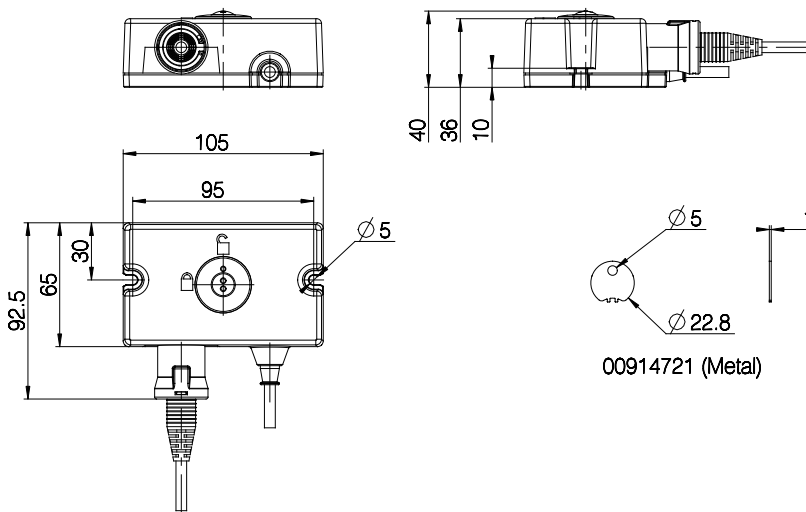
- Connection with CB9 (DIN – plug) (always serial connection)
- Approvals: IEC 60601-1:2005  
ANSI/AAMI ES60601-1 (2005)  
CAN/CSA-C22.2 No. 60601-1 (2008)

Dimension (mm):

ACL standard

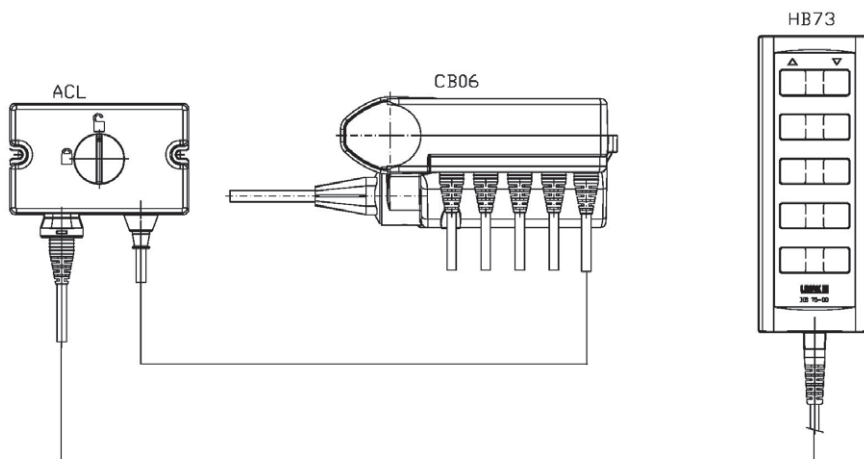


ACL lock key



Drawing no.: 911100

Combination examples for ACL:



Drawing no.: ACL\_CB06001A

## ACL

### Ordering example:

AC	L	4	0	30	00	+	8	0805	
									<b>Cable length:</b> 0805 = Standard length 9 core
									<b>Cable type:</b> 8 = Straight 9 core DIN grey RAL 7035 A = Straight 9 core Modular Jack (for CB6) RAL 7016
									<b>Box colour:</b> = Dark grey - RAL 7016 (only with modular Jack) + Grey - RAL 7035 (only with 9 core DIN)
									<b>Not used</b>
									<b>Functionality:</b> 30 = DIN (CB9) 31 = DIN (CB9) * 35 = Modular jack (CB6)
									<b>Activation:</b> 0 = ACL Standard 1 = ACL lock key (dark grey)
									<b>IP Degree:</b> 4 = IPX4
									<b>Plastic case:</b> L = Micro - Attendant Control Lock.
									<b>Type:</b> ACL

\* Only ESF:

- Only CB9 standard: CB9..AC ; CB9..AD; CB9..AE
- When compatibility with existing applications is wanted (backward compatibility), please contact LINAK A/S
- ACL lock key to be ordered separately - article no. 00914721 (metal)