

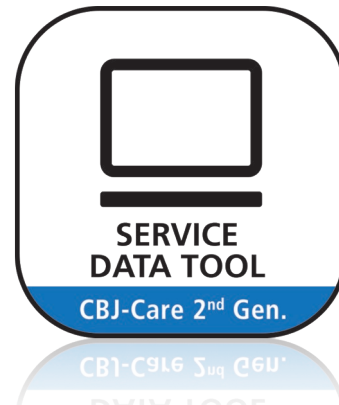
Service Data Tool for
JUMBO Care 2nd generation
Data sheet

Service Data Tool for JUMBO Care 2nd generation

Service Data Tool ensures efficient maintenance of patient lifts.

Service data tool enables easy read out of service data from the CBJ-Care. Coloured graphic bars in green, yellow and orange indicate when it is time for maintenance. Safe patient handling is ensured by easy access to

- Knowledge about wear and tear
- Fault finding tool
- Easy service visit reports



Features and Options:

- Read out service data on laptop via Service data tool
- Service counters for counting of days or cycles - indicates time for service visits (12 months / 8000 cycles whichever comes first)
- Possibility to change the service intervals e.g. to shorter intervals if lift gets worn
- Information about battery state helps to ensure the patient lift functional at all times
- Number of low critical battery level since last reset and totally for indication of battery behavior
- Actuator life time information is read out of the JUMBO Care control box
- Intelligent cycle counter counts only when lift is loaded
- Intelligent work counter sums up the work done by the actuators and considers how much the actuators have been loaded
- Overload information about why the patient lift has stopped reduces number of service visits
- Easy service visit reports for documentation of service visit
- Help icon for easy data explanation
- Information icon e.g. for adding checklist for Service Technician to follow

Service Data Tool user interface

The Service data tool for JUMBO Care 2nd generation is developed with focus on user friendly design which is easy to use. Information is divided into sections as below:

Section	Used for.....
Summary	For quick and easy overview of service indicator, battery status and actuator statistics
Actuators	For detailed information about the actuators' statistical service data
Control box	For detailed information about the control box and battery state
Controls_InputOutput	For detailed information about hand control signals and codes
Report	For service reporting and resetting of service counters via hand control after saving report
Advanced settings	Intended for trained and authorised service technicians only. For change of service settings and update of actuator info if the control box is replaced to maintain service data. For update of information when replacing the actuator

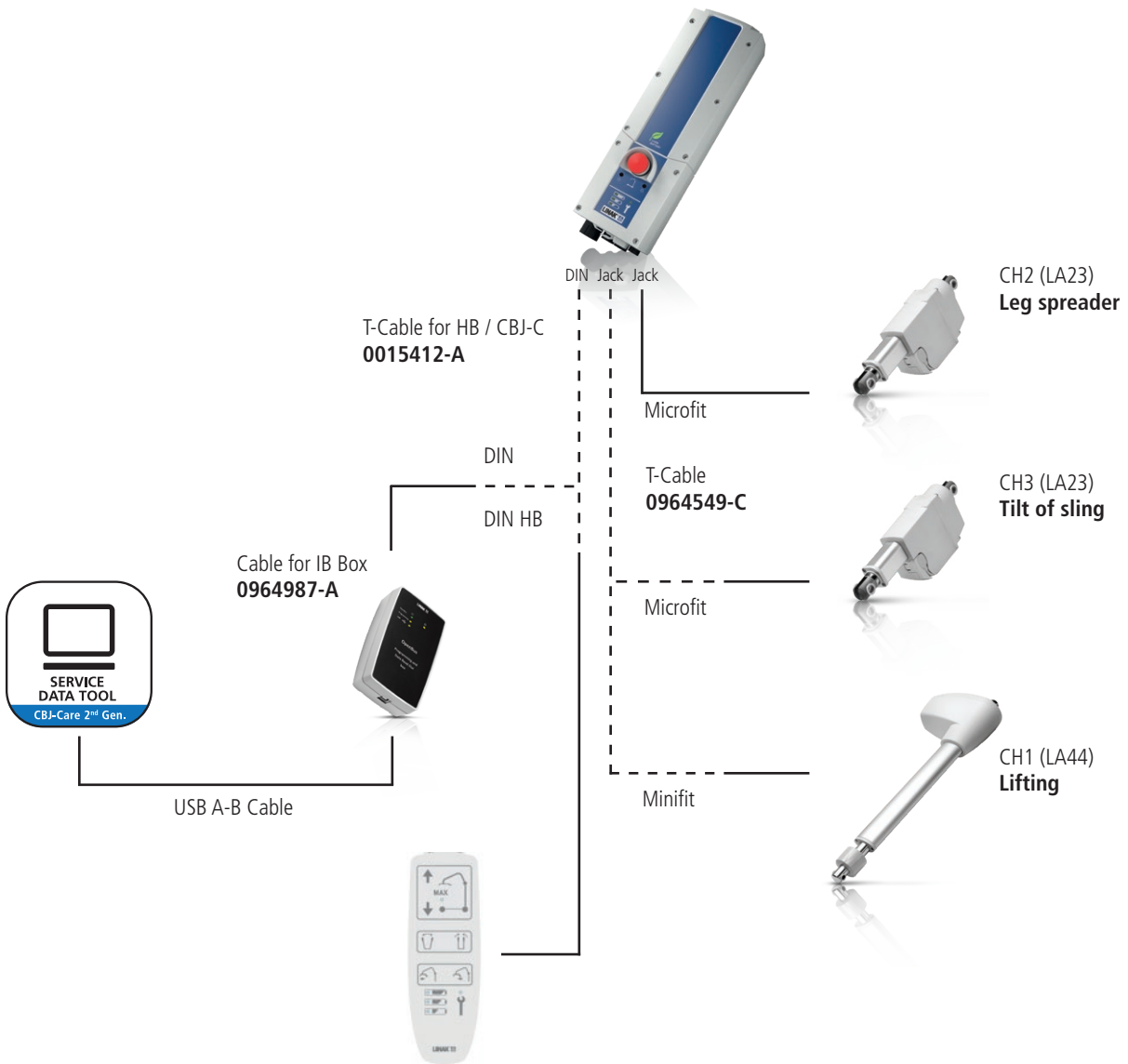
Summary section: For quick and easy overview of service indicator, battery status and actuator statistics

The screenshot displays the LINAK JUMBO CARE Summary view software interface. The window title is "JumboCare_2gen - Linak Service Data Tool 2 - Ver. 2.4.3 build 0". The interface is divided into several sections:

- Connection Info:** Shows COM4 (v100.1.7.1) and OpenbusOK.
- Devices:** Lists CBJC with details: Device: 4, SDF V2rev: 7, App. SW: 1000003, Version: 0.9000.
- Summary Dashboard:**
 - SERVICE COUNTERS:** Shows 0 Days (0/360 Days bar), 0 Cycles (0/8000 Cycles bar), 1 Number of reset's, and N/A Days since 2nd last reset.
 - BATTERY STATE:** Shows a battery level bar at 100% (100% to 0%), 0% Battery low critical level, 0 Since last reset, and 0 Total. A note states: "System can only run actuator 1 inwards".
 - ACTUATOR INFO:**
 - Actuator 1: Status: Direction out, Cycles: 0, Work: A · S, Overload: 60.
 - Actuator 2: Status: Idle, Work: A · S, Overload: 3.
 - Actuator 3: Status: Idle, Work: A · S, Overload: 5.
- Visuals:** Includes images of the JumboCare machine and the control box. The LINAK logo and slogan "WE IMPROVE YOUR LIFE" are visible at the bottom.
- Footer:** "Last Updated 13:38:27".

System example:

Service Data tool and JUMBO Care 2nd generation, 3 channel solution:



Notice! The service data tool version 2.5.0 or newer is needed. The JUMBO Care article number should begin with CBJxxxxxxxxxxxx.

Please remember to order cables and the IB300001 box for data read-out from JUMBO Care to laptop.

The T-Cable 0015412-A is needed if you do not have an activation button on the JUMBO Care control box.

Article number	Product
IB300001	Box for data read out from JUMBO Care to laptop
0964987-A	Cable for usage of service data tool (from JUMBO Care to IB300001 box)
0015412-A	T-Cable for usage of Handset and service data tool. (from JUMBO Care to Handset and IB300001 box)
0964549-C	T-Cable, Stereo Jack for CH1 to enable 3 channel solution

LINAK® accepts no responsibility for possible errors or inaccuracies in catalogues, brochures, and other material. LINAK reserves the right to change its products without prior notice. LINAK cannot guarantee product availability and reserves the right to discontinue the sale of any product. The user is responsible for determining the suitability of LINAK products for a specific application. All sales are subject to the 'Standard Terms of Sale and Delivery', available on LINAK websites.

LINAK and the LINAK logotype are registered trademarks of LINAK A/S. All rights reserved.