



Service Data Tool for  
JUMBO Care 2<sup>nd</sup> generation  
**Data sheet**

# Service Data Tool for JUMBO Care 2<sup>nd</sup> generation

---

Service Data Tool ensures efficient maintenance of patient lifts.

Service data tool enables easy read out of service data from the CBJ-Care. Coloured graphic bars in green, yellow and orange indicate when it is time for maintenance. Safe patient handling is ensured by easy access to

- Knowledge about wear and tear
- Fault finding tool
- Easy service visit reports



---

## Features and Options:

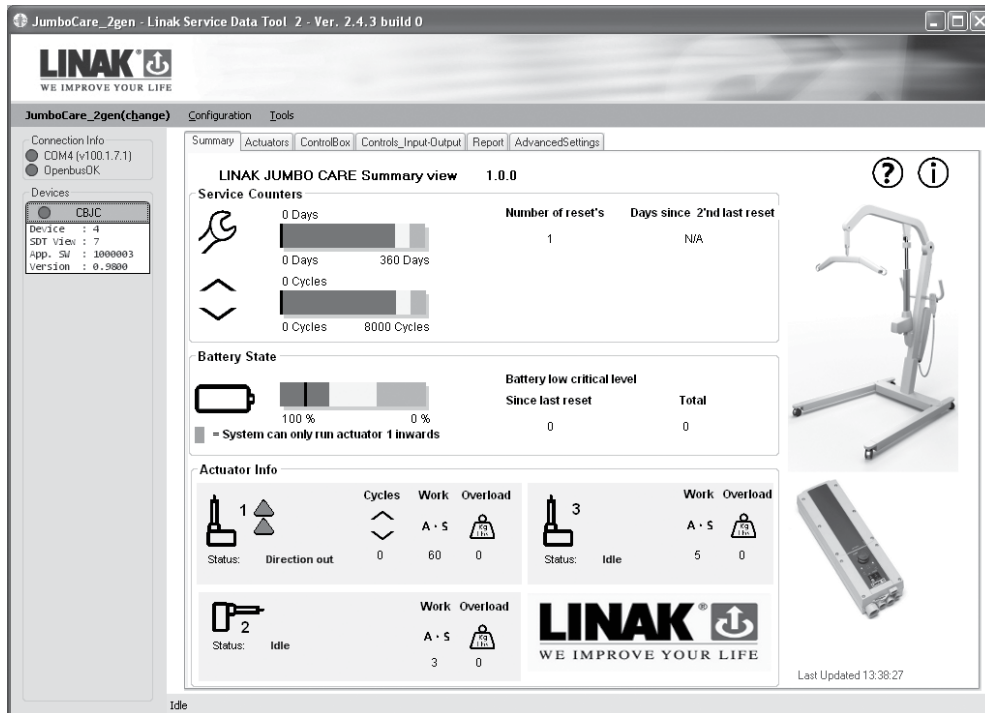
- Read out service data on laptop via Service data tool
- Service counters for counting of days or cycles - indicates time for service visits (12 months / 8000 cycles whichever comes first)
- Possibility to change the service intervals e.g. to shorter intervals if lift gets worn
- Information about battery state helps to ensure the patient lift functional at all times
- Number of low critical battery level since last reset and totally for indication of battery behavior
- Actuator life time information is read out of the JUMBO Care control box
- Intelligent cycle counter counts only when lift is loaded
- Intelligent work counter sums up the work done by the actuators and considers how much the actuators have been loaded
- Overload information about why the patient lift has stopped reduces number of service visits
- Easy service visit reports for documentation of service visit
- Help icon for easy data explanation
- Information icon e.g. for adding checklist for Service Technician to follow

## Service Data Tool user interface

The Service data tool for JUMBO Care 2<sup>nd</sup> generation is developed with focus on user friendly design which is easy to use. Information is divided into sections as below:

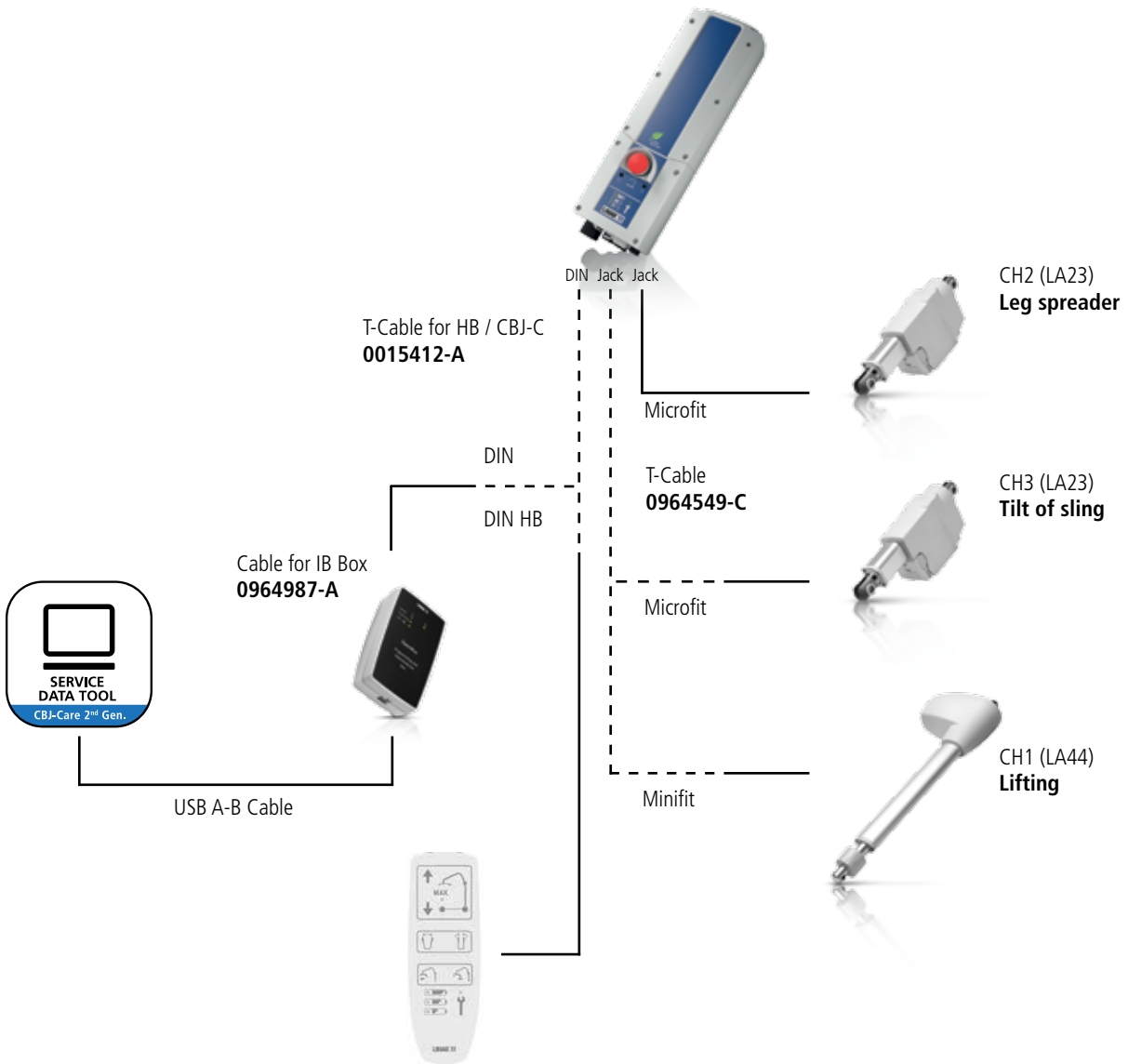
Section	Used for.....
<b>Summary</b>	For quick and easy overview of service indicator, battery status and actuator statistics
<b>Actuators</b>	For detailed information about the actuators' statistical service data
<b>Control box</b>	For detailed information about the control box and battery state
<b>Controls_InputOutput</b>	For detailed information about hand control signals and codes
<b>Report</b>	For service reporting and resetting of service counters via hand control after saving report
<b>Advanced settings</b>	<b>Intended for trained and authorised service technicians only.</b> For change of service settings and update of actuator info if the control box is replaced to maintain service data. For update of information when replacing the actuator

Summary section: For quick and easy overview of service indicator, battery status and actuator statistics



**System example:**

Service Data tool and JUMBO Care 2<sup>nd</sup> generation, 3 channel solution:



Notice! The service data tool version 2.5.0 or newer is needed. The JUMBO Care article number should begin with CBJxxxxxxxxxxxx.

Please remember to order cables and the IB300001 box for data read-out from JUMBO Care to laptop.

The T-Cable 0015412-A is needed if you do not have an activation button on the JUMBO Care control box.

Article number	Product
IB300001	Box for data read out from JUMBO Care to laptop
0964478	Cable for usage of service data tool (from JUMBO Care to IB300001 box)
0015412-A	T-Cable for usage of Handset and service data tool. (from JUMBO Care to Handset and IB300001 box)
0964549-C	T-Cable, Stereo Jack for CH1 to enable 3 channel solution

**Terms of use**

The user is responsible for determining the suitability of LINAK products for specific application. LINAK takes great care in providing accurate and up-to-date information on its products. However, due to continuous development in order to improve its products, LINAK products are subject to frequent modifications and changes without prior notice. Therefore, LINAK cannot guarantee the correct and actual status of said information on its products. While LINAK uses its best efforts to fulfil orders, LINAK cannot, for the same reasons as mentioned above, guarantee the availability of any particular product. Therefore, LINAK reserves the right to discontinue the sale of any product displayed on its website or listed in its catalogues or other written material drawn up by LINAK. All sales are subject to the Standard Terms of Sale and Delivery for LINAK. For a copy hereof, please contact LINAK.