



Modular Junction Box MJB5 Plus with Port Repeater

Data sheet

MJB5 Plus with Port Repeater

The modular junction box MJB5 Plus is designed for use together with OpenBus™ control boxes.

The MJB5 Plus makes it possible to connect multiple hand controls and attendant controls. It can even be used for charging or to connect the Under Bed Light and 3rd party products.

The compact design and in-line cable management makes it easy to integrate in a wide range of healthcare applications like hospital beds, surgery tables and treatment chairs.

The MJB5 Plus offers IPX6 Washable DURA™ and is the perfect match for the OpenBus control box platform. IPX6 Washable DURA™ helps prolong the lifetime and makes the system ready for wash tunnels and high-pressure wash down.

MJB5 Plus Port Repeater, version 000:

The MJB5 Plus version 000 is used where there is a need for more ports than available in the control box.

It is possible to connect multiple MJB5 Plus boxes obtaining unlimited extra connections to the control box.



Functionality:

Connect a modular plug cable between the MJB5 Plus and the control box.

This gives then up to 4 extra ports for accessories and HB, SLS etc. The 000 version is only to be used as a Port Repeater, the 000 version is not programmable.

Features & options:

- Connection: Up to 4 controls of various types with modular jack plug
- Colour: Light grey RAL 7035
- Protection class: IPX6, IPX6 Washable DURA™
- Number of ports: can be ordered as 3,4 or 5 port type (please refer to the combination code (Configurator no. 000))

Usage:

- Compatibility: All OpenBus products
- Operation temperature: +5 °C to +40 °C
- Storage temperature: -10 °C to +50 °C
- Relative humidity: 20% to 80% non-condensing
- Atmospheric pressure: 700 to 1060 hPa
- Operational meters above sea level: Max. 3000 meters
- Latex free: Yes
- Approvals: IEC60601-1, IEC60601-1-6
ANSI/AAMI ES60601-1
CAN/CSA-22.2 No 60601-1

MJB5 Plus Port Repeater usage:

Compatibility: All OpenBus products and CA control boxes.

Ordering example:

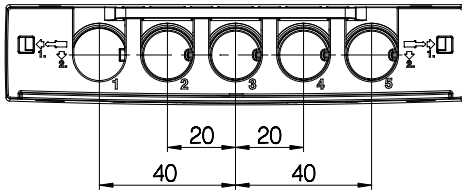
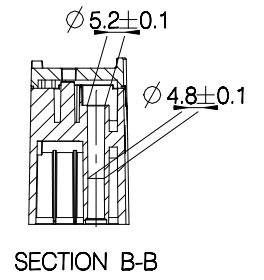
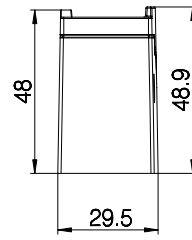
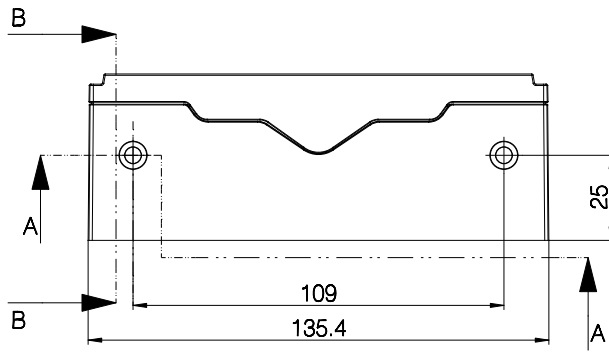
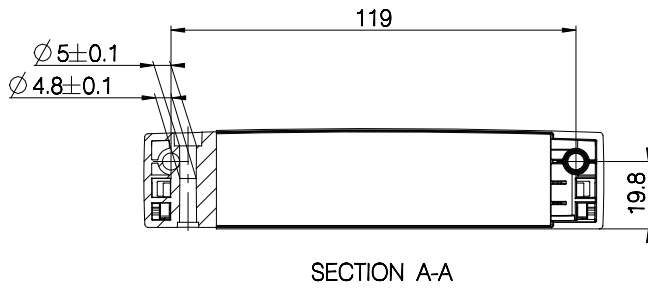
MJB		
Special/Standard code no.	000	000 = Port repeater box (without functionality) 502 = SMPS 4W (Switch Mode Power Supply) 504 = Gateway 505 = UBL (Internal) / Switch input (S1 + S2) 506 = UBL (External) / Switch input (S1 + S2) 509 = Analogue to OpenBus™ Converter
No. of OPENBUS™ connections	4	1 = for standard code: 502 (Ports: 1=OB, 2=third party) for standard code: 504 (Ports: 1=OB, 5=Third party) 3 = for standard code 000: 3 ports 4 = for standard code 000: 4 ports for standard code: 505, 506 & 509 5 = for standard code 000: 5 ports
Configuration Number	000	000 = Port repeater box (without functionality) 001-099 = standard configuration 100-999 = special configuration
Not used	-	- = Not used
Colour	1	1 = Light grey (RAL 7035)
HardWare version	0	0 = No Power request 1 = HW-variant with power request on all ports where it is possible 2 = HW-variant with power request on port 2 (Only for MJB509) 3 = HW-variant with power request on port 4 & 5 (Only for MJB509)
IP Degree	2	2 = IPX6 9 = IPX6 Washable DURA™
Cable	3	3 = No cable

Chosen item number: MJB0004000-1023

Modular plug cable for connection of OpenBus™ control box to MJB5 Plus has to be ordered separately.

Please remember to order DURA cable and blind plug if IP degree IPX6 Washable DURA™ is required.

Dimensions:



MJB5 Plus Cable and accessory overview

Ordering number	Description	MJB5 Plus version					
		000	502	504	505	506	509
		Port Repeater	SMPS	Gateway	UBL (Int.)	UBL (Ext.)	AOC
0821147	MJB5 Plus locking mechanism	X	X	X	X	X	X
1015W1010-A	Mounting bracket exclusive screws	X	X	X	X	X	X
SA0002645	Special screws type WN1423 K60x16	X	X	X	X	X	X
0821008	Blind plug, RAL 7035 Light Grey, IPX6	X	X	X	X	X	X
0821120	Blind plug, RAL 7035 Light Grey, IPX6 Washable DURA™	X	X	X	X	X	X
0834000	USB cable, length 1000 mm (USB cable is not medically approved)		X				
0964399	Modular plug cable with open end, length 1500 mm				X	X	
0964461-xxxx	Modular plug to modular plug, 6-wire extension cable	X	X	X	X	X	X
0964140-1375	Gateway cable, xxxx mm, modular plug-open end			X			
0964135	Under Bed Light Cable, 2500 mm					X	
0965347	Modular plug cable with 10 open-end wires						X