

DESK FRAME 2 (DF2)

Data Sheet





The Desk Frame 2 (DF2) is a full-frame solution from LINAK. Simple and intuitive to assemble, the DF2 is one of the fastest ways to create a 2-legged sit-stand desk.

The frame is built around a telescopic beam making it possible to create various desk sizes with the same frame. The beam contains all electronics and motor, and the columns are simply clicked on to the beam, minimizing the number of cables needed.

With a lifting capacity of up to 1600 N, the DF2 frame can be used for various office applications. Select among various column shapes, desk feet types, and desk panel designs, and create your own favorite frame design. As standard, the DF2 features sensor-based anti-collision, ensuring that collisions with obstacles do not damage the furniture.

DF2 features

- Telescopic frame, fits desk sizes from 120 – 180 cm
- Available as T or C frame
- Up to 1600 N lifting capacity
- Built-in sensor-based anti-collision
- 0.1 W standby power consumption
- Soft start and stop

Part names

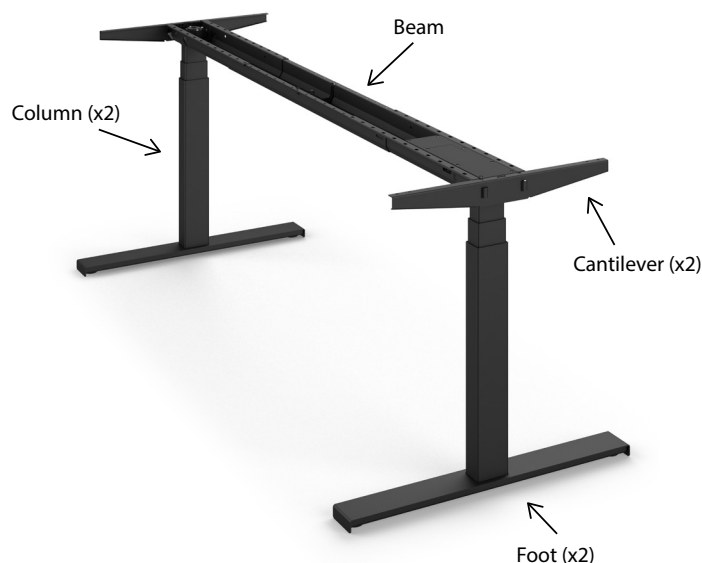


Figure 1 Names of the Desk Frame 2 parts

Features/Usage

Features

Common

- Colours (all metal parts): black (RAL 9005), grey (RAL 9006) or white (RAL 9016)

Beam

- Contains the motor and all electronics
- A telescopic solution – fits table lengths 1180 mm to 1829 mm (46.5" to 72")
- adjustable in 50 mm (2") steps
- Mains voltage:
 - 230-240 V, 50-60 Hz
 - 120 V, 50-60 Hz (US / Canada)
 - 100 V, 50-60 Hz (Japan)
- Oval holes ensure flexibility as regards pre-drilling holes in tabletop
- Sensor-based anti-collision
- ZERO™ power: low standby power consumption – only 0.1 W

Columns

- PLUS™ design (no visible gliding pads)
- Easy mounting without any screws - simply snap on to the beam
- Max. speed 38 mm/s unloaded
- Lifting force/self-lock (per frame; load - including tabletop - equally distributed)

Desk type	Max. lifting force (N)	Self-lock (N)	Bending moment
T-desk	1600	1200	Max. 200 Nm dynamic
C-desk	1400		

- Dimensions:

Profile	Built-in length	Stroke length
50 x 80 mm	517	650
	475 (BIFMA)	665 (BIFMA)
70 x 70 mm	517	650
	475 (BIFMA)	665 (BIFMA)

See also [Dimension drawings](#)

Cantilevers

- Available for T-desk or C-desk designs
 - T-desks (central placement of columns)
 - C-desks (off-centre placement of columns)
- Easy mounting without any screws - simply click on to the beam
- Length (fits table depth 584 mm to 800 mm):
 - 546 mm (T desks)
 - 550 mm (C desks)

Desk panels

- DPF1C
- DPF1K

Feet

- Feet for T-desk or C-desk designs
- Length: 560 mm or 710 mm
- Mounting option:
 - On top
 - Recessed
 - Click-on Feet for T-desk design

Usage

- Can be used for:
 - T-desks (central placement of columns)
 - C-desks (off-centre placement of columns)
- Compatible with DESKLIFT™ Feet
- Compatible with Desk Panels DPF1C and DPF1K
- Duty cycle: 5% ~ 1 minute continuous use at full load, followed by 19 minutes pause
- For indoor use in dry locations
- Ambient temperature: 10 to 40 °C
- Storage and transportation temperature: -10 to +50 °C
- Complies with
 - IEC/EN 60335-1 - Household and similar electrical appliances – Safety – Part 1: General requirements
 - UL962 - Standard for Household and Commercial Furnishings 4th edition
 - UL2999 - Individual Commercial Office Furnishings 1st Edition
 - CSA C22.2 No.68-18 - Motor Operated Appliances (Household and Commercial) 8th Edition
- Meets ANSI/BIFMA X5.5:2014 (up to 1829 mm (72"))
- Tested in accordance with:
 - EN527-1:2011 Office furniture – Work tables and desks – Part 1: Dimensions
 - EN527-2:2016+A1:2019 Office furniture – work tables – Part 2: Safety , strength and durability requirements

Ordering

Combination codes for DF2 beam, columns, cantilevers, desk panels and cables.

Beam

	DF2B	
MOTOR TYPE	0	0 = Standard
OPTION	0	0 = Standard
OPTION	0	0 = Standard
PACKAGING	1	1 = Set-packed
OPTION	0	0 = Standard
OPTION	0	0 = Standard
COLOUR	B	A = All metal parts grey (RAL 9006) B = All metal parts black (RAL 9005) D = All metal parts white (RAL 9016)
LENGTH	0	0 = Adjustable from 1150 mm to 1750 mm
OPTION	0	0 = Standard
OPTION	0	0 = Standard
OPTION	0	0 = Standard
OPTION	0	0 = Standard
ANTI-COLLISION	0	0 = Standard (sensor-based)
INTERFACE	A	A = LINbus interface
MAINS VOLTAGE	1	0 = 230-240 V, 50-60 Hz 1 = 120 V, 50-60 Hz (US / Canada) 100 V, 50-60 Hz (Japan)
OPTION	0	0 = Standard
MAINS CABLE	9	9 = Without cable

Selected combination code:

DF2B000100B00000A109

Columns

	DF2L	
COLUMN TYPE	06	06 = 3-part 50 x 80 19 = 3-part 70 x 70
SPINDLE TYPE	0	0 = 20 mm pitch
OPTION	0	0 = Standard
OPTION	0	0 = Standard
OPTION	0	0 = Standard
MOUNTING BRACKET	0	0 = None
COLOUR	B	A = Grey (RAL 9006) B = Black (RAL 9005) D = White (RAL 9016)
STANDARD	P	P = Standard Z = Prepared for Click-on Foot
OPTION	0	0 = Standard
STROKE LENGTH	650	650 = 650 mm 665 = 665 mm (BIFMA)
INSTALLATION DIM.	517	517 = 517 mm 475 = 475 mm (BIFMA)

**Selected combination code:
DF2L0600000BP0650517**



A column in BIFMA version is less stable in full stroke length compared to a standard column as it has less overlap between the profiles.

Disassembly tool

A tool for disassembling the DF2 columns from the beam. Order separately (ordering code: SA1023W1241).



Cantilever set

(Cantilevers, desk panel and cable)

	DF2C	
DESK TYPE	T	C = C desk T = T desk
OPTION	0	0 = Standard
OPTION	0	0 = Standard
PACKAGING	1	1 = Set-packed
MOUNTING KIT	00	00 = None 02 = 20 x ø4.5 x 20 mm panhead chipboard screws for beam 2 x ø4.0 x 20 mm for DP1FC and DP1FK 3 x 6.6 mm cable clamps
COLOUR	B	A = All metal parts grey (RAL 9006) B = All metal parts black (RAL 9005) D = All metal parts white (RAL 9016)
OPTION	0	0 = Standard
MAINS CABLE	00	00 = None AA = EU 0015869, 2.0 m * AB = UK 0015588, 3.2 m AC = US 0015942, 3.2 m AD = CH 0015833, 3.2 m AE = EU 0015562, 3.2m AF = CH 0015618, 2.0 m * AG = US 0015862, 3.2 m * AI = KOR 0015864, 3.2 m AJ = JP 0015841, 3.2 m
OPTION	0	0 = Standard
OPTION	0	0 = Standard
DESK PANEL	00	00 = None AK = DPF1K (with mounting bracket 914759) AQ = DPF1C cm (with mounting bracket 914759) AR = DPF1C inch (with mounting bracket 914759)
OPTION	0	0 = Standard
OPTION	0	0 = Standard

Selected combination code:
DF2CT00100B000000000

* PVC-Free™

Feet, set-packed (DLF)

For ordering of DESKLIFT™ feet, please also refer to the [DESKLIFT™ Feet data sheet](#).

	DLF	
COLUMN TYPE	06	00 = Click-on Feet 06 = DL6 19 = DL19
COLUMN INTERFACE	1	1 = Top (On top / Click-on) 2 = Recessed
DESK DESIGN	1	1 = T-type 2 = C-type *
MOUNTING KIT	0	0 = None (for Click-on feet the adjustment screws are pre-mounted) 1 = 8 x M6 cylinder head screws + 4 x adjustable glides
COLOUR	B	A = Grey (RAL 9006) B = Black (RAL 9005) D = White (RAL 9016)
LENGTH	710	560 = 560 mm (≈ 22") 710 = 710 mm (≈ 28")
OPTION	0	0 = Standard
PACKING	0	0 = Set-packed
OPTION	0	0 = Standard
		Selected combination code: DLF06110B710000


*: C variant in recessed version only available for Column type option 06



Click-on Feet are available as a T-type variant

Tehcnical data

Performance curves

 The DF2 performance depends on the mains supply in the application.

The curves below show the performance of the DF2 (T-desk) with two columns (equally loaded).

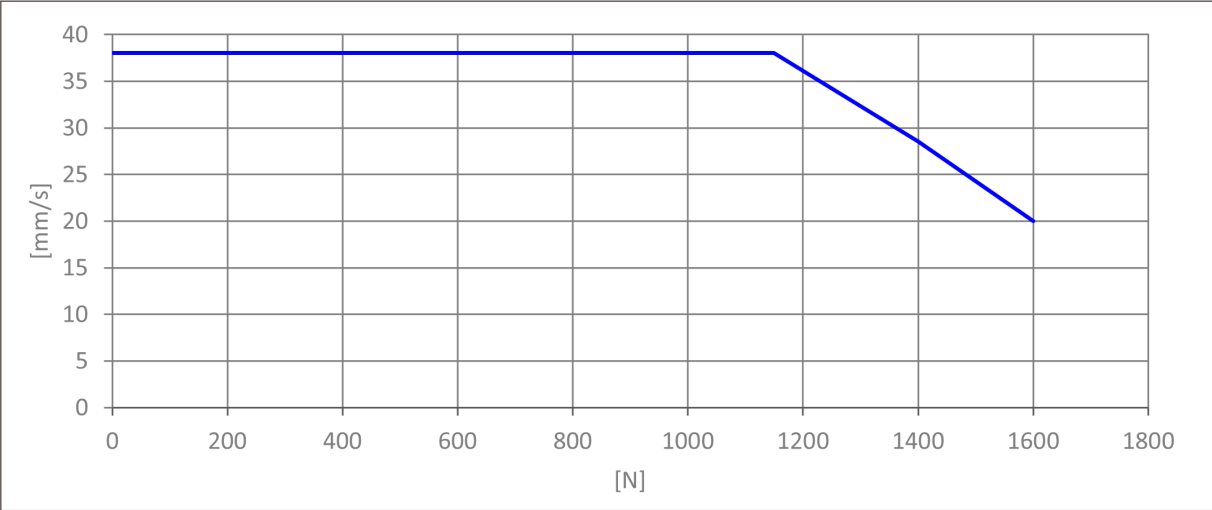


Figure 2 Mains: 230-240 V / 50-60 Hz or 110-120 V / 50-60 Hz

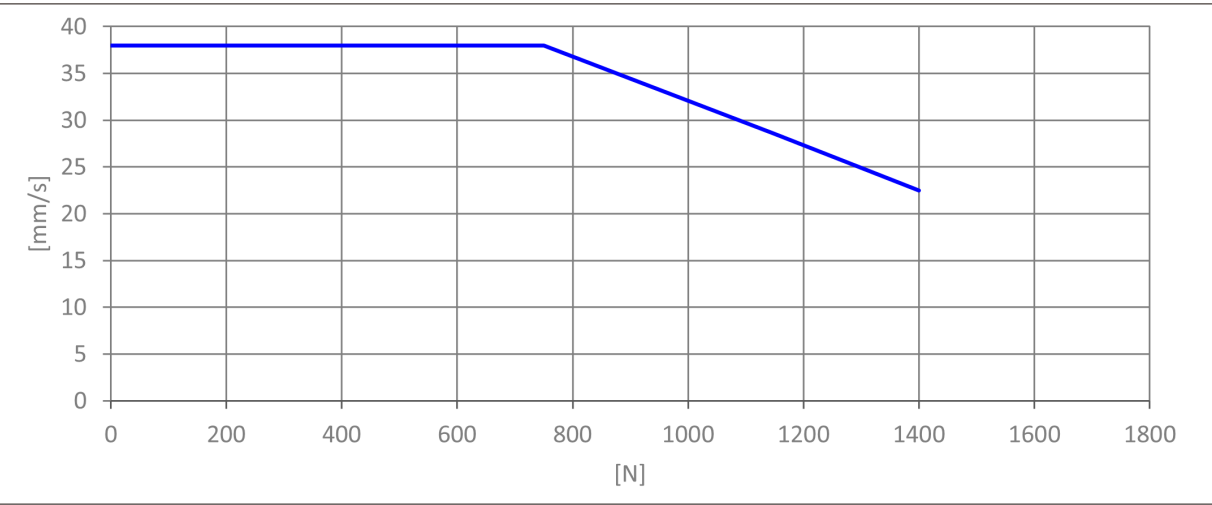


Figure 3 Mains: 100 V / 50 Hz

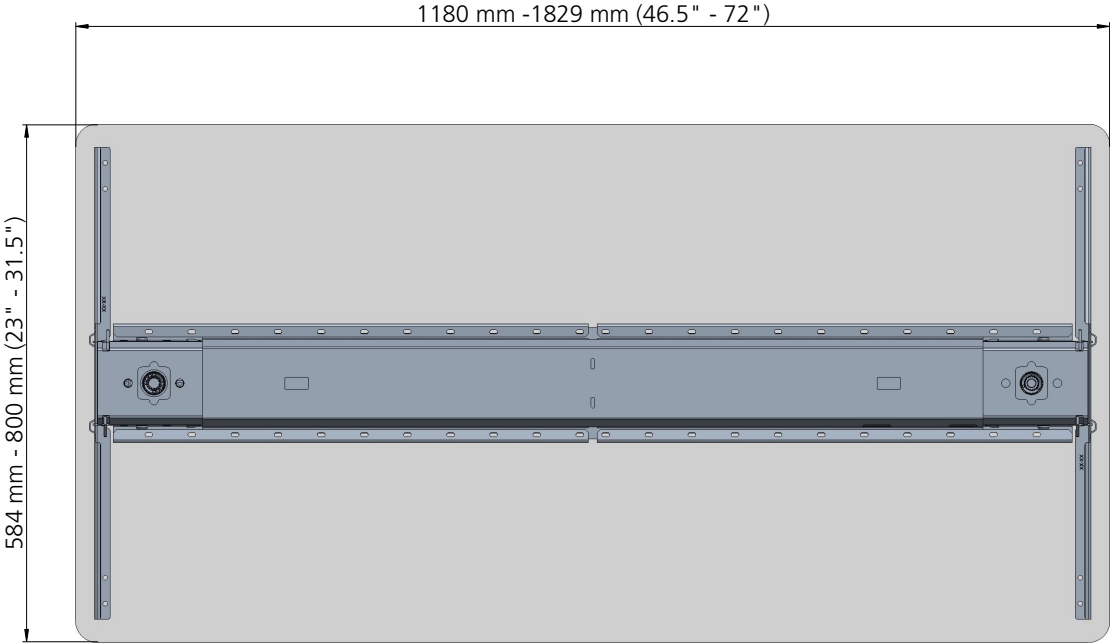
Table size and type

The Desk Frame 2 is designed for T-desks and C-desks. The cantilevers must be mounted centrally on the tabletop.



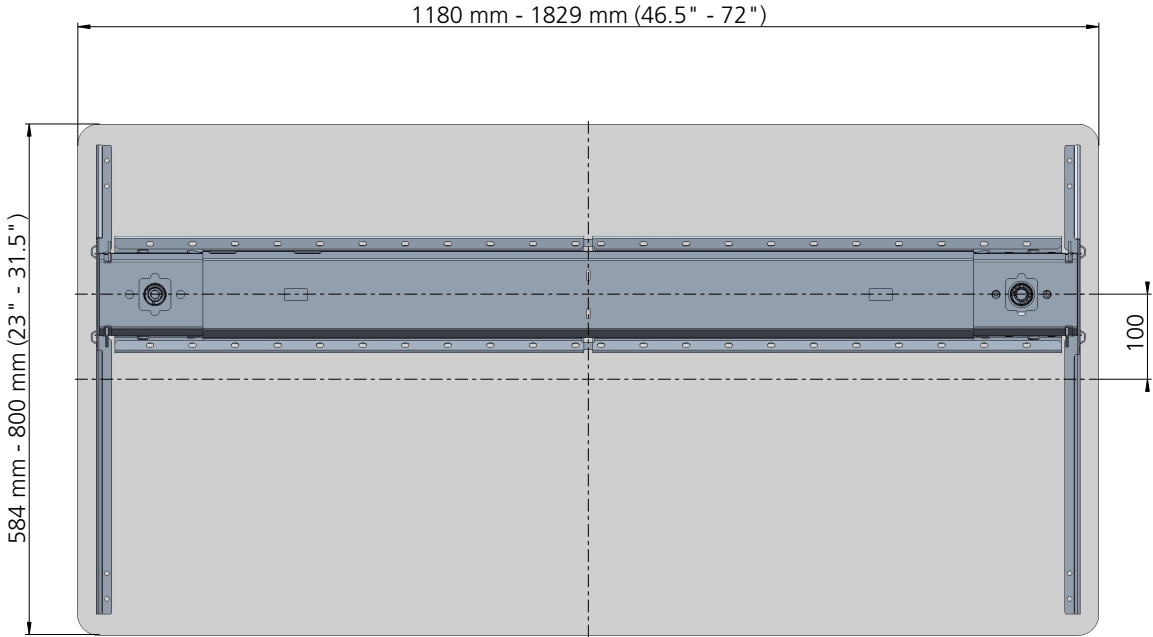
Recommended tabletop:

Material	Veneered chipboard
	Plywood
Thickness	Min. 21 mm (13/16")
Size	Min. 584 mm x 1180 mm (23" x 46.5")
	Max. 800 mm x 1829 mm (31.5" x 72")



Drawing No. 1066W4037

Figure 4 DF2 (T-desk design) with cantilevers mounted centrally on the tabletop



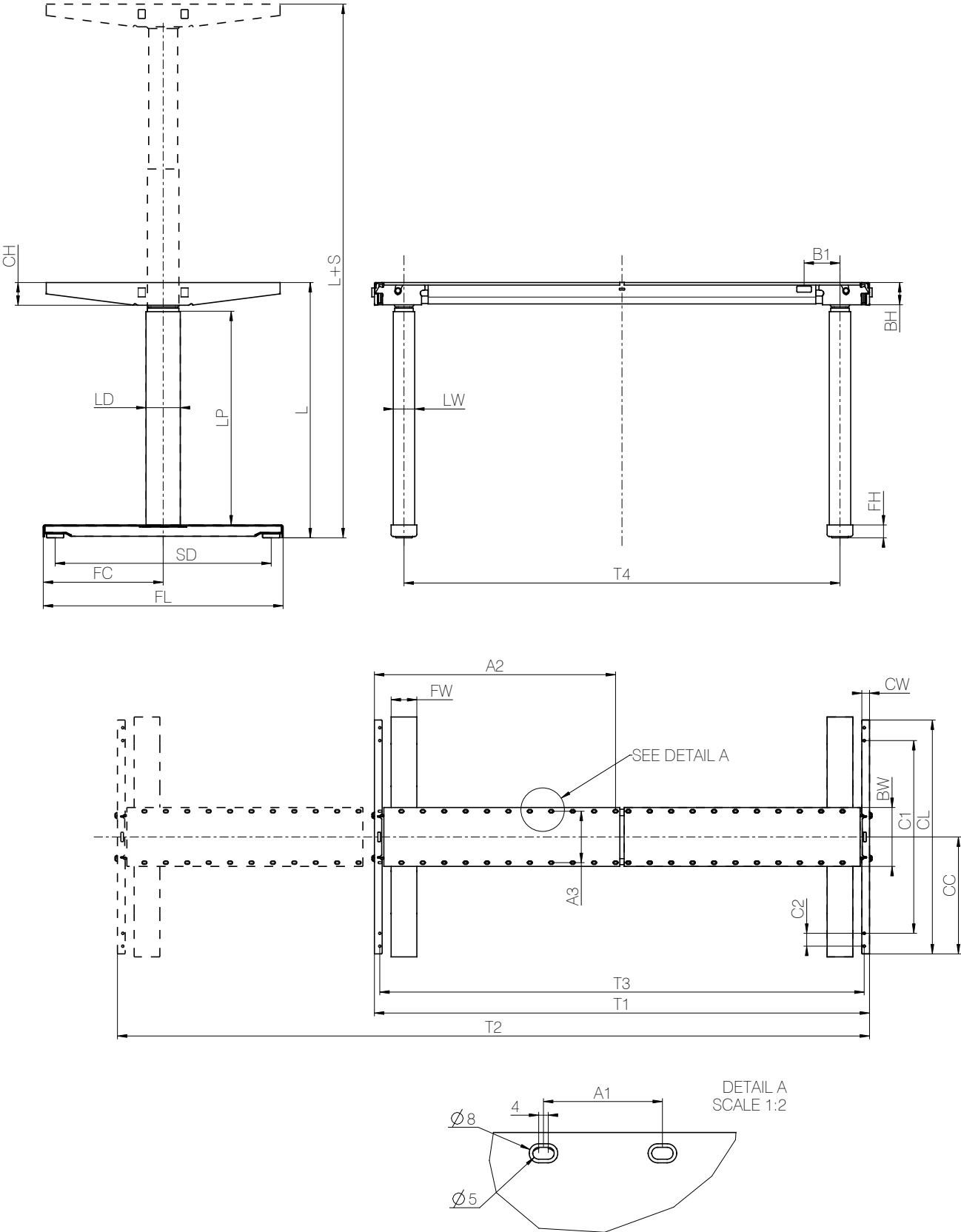
Drawing No. 1066W4038

Figure 5 DF2 (C-desk design) with cantilevers mounted centrally on the tabletop

Dimension drawings

More dimension drawings are available on our website:
<https://www.linak.com/products/desk-frames/desk-frame-2/#/2d3d>

Overview



Drawing No. 1023W4010

Figure 6 Desk Frame 2 dimensions (mm)

For specifications, see the following tables.

Top frame

Legend	Description	Measurement
T1	Length (completely retracted)	1150
T2	Length (completely extracted)	1750
T3	Distance between screw holes for cantilever (completely retracted beam)	1131
T4	Distance between centre of columns (completely retracted beam)	1018

Table 7 Top frame dimensions (mm)

Beam

Legend	Description	Measurement
BH	Height	50
BW	Width	137.5
B1	Distance between column centre and centre of hole for RJ45 ports	84
A1	Distance between screw holes for beam (length)	50
A2	Distance between outside cantilever and centre of innermost screw hole	563
A3	Distance between screw holes for beam (width)	119

Table 8 Beam dimensions (mm)

Cantilevers

Legend	Description	T-desk	C-desk
CL	Length	546	550
CH	Height	53	53
CW	Width	18	18
C1	Distance between inner screw holes	450	454
C2	Distance between screw holes	30	30
CC	Distance from centre of column to front of cantilever	69	69

Table 9 Cantilever dimensions (mm)

Columns

Legend	Description	DF2L06	DF2L06 (BIFMA)	DF2L19	DF2L19 (BIFMA)
L *	Length	597	538	597	538
S	Stroke	650	665	650	665
LP	Length of outer profile	498	456	498	456
LD	Depth	80	80	70	70
LW	Width	50	50	70	70

Table 10 Column dimensions (mm)

* DL6 BIFMA: recessed foot

The other columns: on top foot

The adjustment screw: minimum height

Feet

Legend	Description		On top	Recessed	Click-on
FL	Length	Long	710	710	710
		Short	560	560	560
FH	Height		31	27 (14*)	21
FW	Width	DF2L06	60	75	75
		DF2L19	80	95	75
FC	Distance from centre of column to front of foot	Long	T: 355 C: 455	T: 355 C: 455	355
		Short	T: 280 C: 380	T: 280 C: 380	280
SD	Distance between centre of adjustment screws	Long	656.8	656.8	649
		Short	506.8	506.8	499

Table 11 Feet dimensions (mm)

* Distance from floor to bottom of column mounting hole.

Contacts

FACTORIES

Denmark - Headquarters

LINAK A/S
Phone: +45 73 15 15 15
Fax: +45 74 45 80 48
Fax (Sales): +45 73 15 16 13
Web: www.linak.com

China

LINAK (Shenzhen) Actuator Systems, Ltd.
Phone: +86 755 8610 6656
Phone: +86 755 8610 6990
Web: www.linak.cn

Slovakia

LINAK Slovakia s.r.o.
Phone: +421 51 7563 444
Web: www.linak.sk

Thailand

LINAK APAC Ltd.
Phone: +66 33 265 400
Web: www.linak.com

USA

LINAK U.S. Inc.
Americas Headquarters
Phone: +1 502 253 5595
Fax: +1 502 253 5596
Web: www.linak-us.com
www.linak-latinamerica.com

SUBSIDIARIES

Australia

LINAK Australia Pty. Ltd
Phone: +61 3 8796 9777
Fax: +61 3 8796 9778
E-mail: sales@linak.com.au
Web: www.linak.com.au

Austria

LINAK Zweigniederlassung - Österreich (Wien)
Phone: +43 (1) 890 7446
Fax: +43 (1) 890 744615
E-mail: info@linak.de
Web: www.linak.at - www.linak.hu

Belgium

LINAK Actuator-Systems NV/SA
(Belgium & Luxembourg)
Phone: +32 (0)9 230 01 09
E-mail: beinfo@linak.be
Web: www.linak.be - www.fr.linak.be

Brazil

LINAK Do Brasil Comércio De Atuadores Ltda.
Phone: +55 (11) 2832 7070
Fax: +55 (11) 2832 7060
E-mail: info@linak.com.br
Web: www.linak.com.br

Canada

LINAK Canada Inc.
Phone: +1 502 253 5595
Fax: +1 416 255 7720
E-mail: info@linak.ca
Web: www.linak-us.com

Czech Republic

LINAK C&S s.r.o.
Phone: +42 058 174 1814
Fax: +42 058 170 2452
E-mail: info@linak.cz
Web: www.linak.cz - www.linak.sk

Denmark - International

LINAK International
Phone: +45 73 15 15 15
E-mail: info@linak.com
Web: www.linak.com

Denmark - Sales

LINAK Danmark A/S
Phone: +45 86 80 36 11
Fax: +45 86 82 90 51
E-mail: linak@linak-silkeborg.dk
Web: www.linak.dk

Finland

LINAK OY
Phone: +358 10 841 8700
E-mail: linak@linak.fi
Web: www.linak.fi

France

LINAK France E.U.R.L.
Phone: +33 (0) 2 41 36 34 34
Fax: +33 (0) 2 41 36 35 00
E-mail: linak@linak.fr
Web: www.linak.fr

Germany

LINAK GmbH
Phone: +49 6043 9655 0
Fax: +49 6043 9655 60
E-mail: info@linak.de
Web: www.linak.de

India

LINAK A/S India Liaison Office
Phone: +91 120 4531797
Fax: +91 120 4786428
E-mail: info@linak.in
Web: www.linak.in

Ireland

LINAK UK Limited (Ireland)
Phone: +44 (0)121 544 2211
Fax: +44 (0)121 544 2552
+44 (0)796 855 1606 (UK Mobile)
+35 387 634 6554 (Rep.of Ireland Mobile)
E-mail: sales@linak.co.uk
Web: www.linak.co.uk

Italy

LINAK ITALIA S.r.l.
Phone: +39 02 48 46 33 66
Fax: +39 02 48 46 82 52
E-mail: info@linak.it
Web: www.linak.it

Japan

LINAK K.K.
Phone: 81-45-533-0802
Fax: 81-45-533-0803
E-mail: linak@linak.jp
Web: www.linak.jp

Malaysia

LINAK Actuators Sdn. Bhd.
Phone: +60 4 210 6500
Fax: +60 4 226 8901
E-mail: info@linak-asia.com
Web: www.linak.my

Netherlands

LINAK Actuator-Systems B.V.
Phone: +31 76 5 42 44 40 /
+31 76 200 11 10
E-mail: info@linak.nl
Web: www.linak.nl

New Zealand

LINAK New Zealand Ltd
Phone: +64 9580 2071
Fax: +64 9580 2072
E-mail: nzsales@linak.com.au
Web: www.linak.com.au

Norway

LINAK Norge AS
Phone: +47 32 82 90 90
E-mail: info@linak.no
Web: www.linak.no

Poland

LINAK Polska
LINAK Danmark A/S (Spółka Akcyjna)
Phone: +48 22 295 09 70 /
+48 22 295 09 71
E-mail: info@linak.pl
Web: www.linak.pl

Republic of Korea

LINAK Korea Ltd.
Phone: +82 2 6231 1515
Fax: +82 2 6231 1516
E-mail: info@linak.kr
Web: www.linak.kr

Slovakia

LINAK Slovakia S.R.O.
Phone: +421 51 7563 444
Web: www.linak.sk

Spain

LINAK Actuadores, S.L.u
Phone: +34 93 588 27 77
Fax: +34 93 588 27 85
E-mail: esma@linak.es
Web: www.linak.es

Sweden

LINAK Scandinavia AB
Phone: +46 8 732 20 00
Fax: +46 8 732 20 50
E-mail: info@linak.se
Web: www.linak.se

Switzerland

LINAK AG
Phone: +41 43 388 31 88
E-mail: info@linak.ch
Web: www.linak.ch - www.fr.linak.ch
www.it.linak.ch

Taiwan

LINAK (Shenzhen) Actuator systems Ltd.
Taiwan Representative office
Phone: +886 2 272 90068
Fax: +886 2 272 90096
E-mail: sales@linak.com.tw
Web: www.linak.com.tw

Turkey

LINAK İth. İhr. San. ve Tic. A.Ş.
Phone: +90 312 4726338
Fax: +90 312 4726635
E-mail: info@linak.com.tr
Web: www.linak.com.tr

United Kingdom

LINAK UK Limited
Phone: +44 (0)121 544 2211
Fax: +44 (0)121 544 2552
E-mail: sales@linak.co.uk
Web: www.linak.co.uk

Argentina

Novotec Argentina SRL
Phone: 011-4303-8989 / 8900
Fax: 011-4032-0184
E-mail: info@novotecargentina.com
Web: www.novotecargentina.com

Colombia

MEM Ltda
Phone: +[57] (1) 334-7666
Fax: +[57] (1) 282-1684
E-mail: servicioalcliente@memltda.com.co
Web: www.mem.net.co

India

Mechatronics Control Equipments India Pvt Ltd
Phone: +91-44-28558484, 85
E-mail: bala@mechatronicscontrol.com
Web: www.mechatronicscontrol.com

Indonesia

PT. Himalaya Everest Jaya
Phone: +6 221 544 8956 /+6 221 544 8965
Fax: +6 221 619 1925
Fax (Sales): +6 221 619 4658
E-mail: hejplastic-div@centrin.net.id
Web: www.hej.co.id

Israel

NetivTech LTD
Phone: +972 55-2266-535
Fax: +972 2-9900-560
Email: info@NetivTech.com
Web: www.netivtech.com

Singapore

Servo Dynamics Pte Ltd
Phone: +65 6844 0288
Fax: +65 6844 0070
E-mail: servodynamics@servo.com.sg

South Africa

Industrial Specialised Applications CC
Phone: +27 011 466 0346
E-mail: gartht@isagroup.co.za
Web: www.isaza.co.za

United Arab Emirates

Mechatronics
Phone: +971 4 267 4311
Fax: +971 4 267 4312
E-mail: mechtron@emirates.net.ae

DISTRIBUTORS

Terms of use

LINAK® takes great care in providing accurate and up-to-date information on its products. However, the user is responsible for determining the suitability of LINAK products for a specific application. Due to continual development, LINAK products are subject to frequent modifications and changes. LINAK reserves the rights to conduct modifications, updates, and changes without any prior notice. For the same reason, LINAK cannot guarantee the correctness and actual status of imprinted information on its products.

LINAK uses its best efforts to fulfil orders. However, for the reasons mentioned above, LINAK cannot guarantee availability of any particular product at any given time. LINAK reserves the right to discontinue the sale of any product displayed on its website or listed in its catalogues or in other written material created and produced by LINAK, LINAK subsidiaries, or LINAK affiliates. All sales are subject to the 'Standard Terms of Sale and Delivery for LINAK A/S' available on LINAK websites. LINAK and the LINAK logotype are registered trademarks of LINAK A/S. All rights reserved.



WE IMPROVE YOUR LIFE