

TECHLINE SYSTEM SOLUTIONS

www.linak.com/techline

LINAK® 
WE IMPROVE YOUR LIFE

Plug & Play with LINAk system solutions

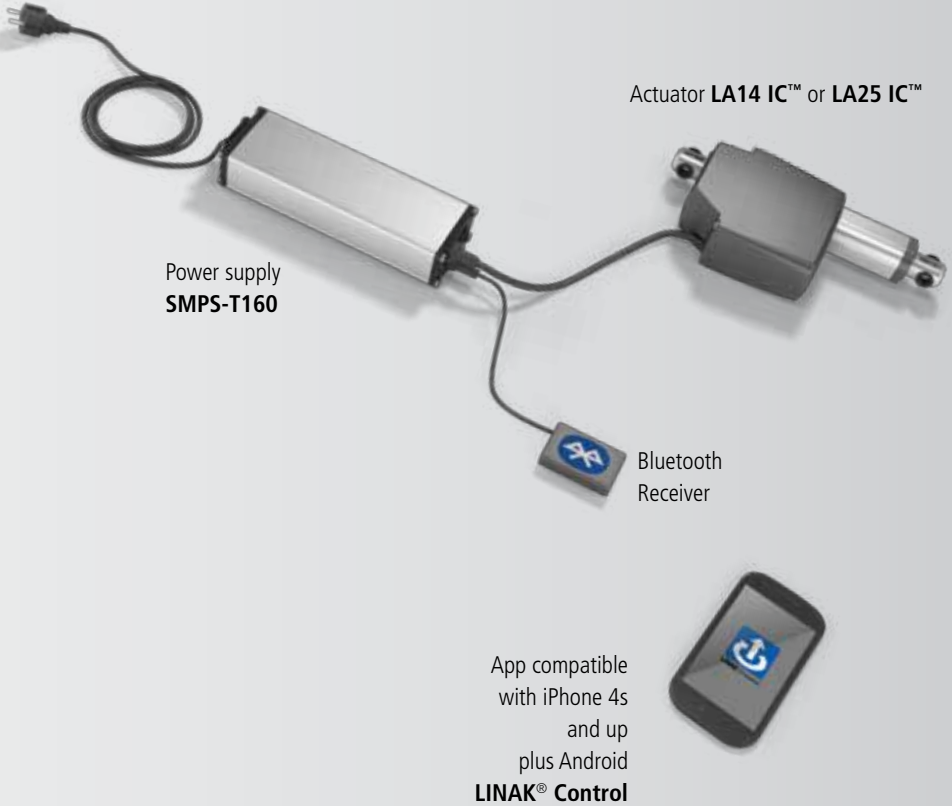
TECHLINE® system solutions improve functionality and add value to your application. Our systems offer:

- Simple Plug & play functionality
- Easy integration into your application
- Time saving installation
- Significant minimisation of installation failures
- The possibility of simultaneous run with up to two actuators at a time
- Signal cable with open leads enables you to connect your own control along with an RF or Bluetooth solution. These can be run at the same time



TECHLINE® system solution examples

Bluetooth Solution

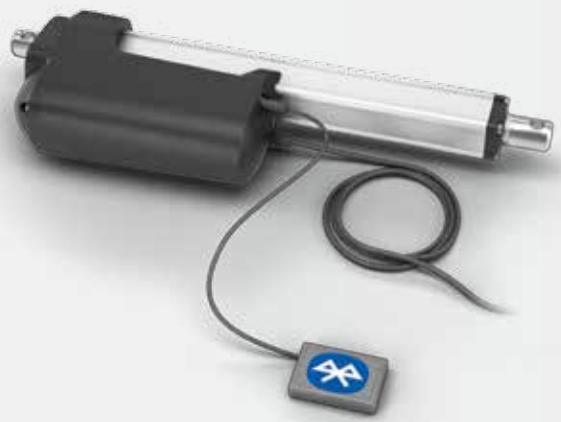


The TECHLINE® Bluetooth solutions run via a LINAK® Bluetooth control app.
Download it on:



TECHLINE[®] system solution examples

Bluetooth Solution



Actuator **LA36 IC™** or **LA37 IC™**

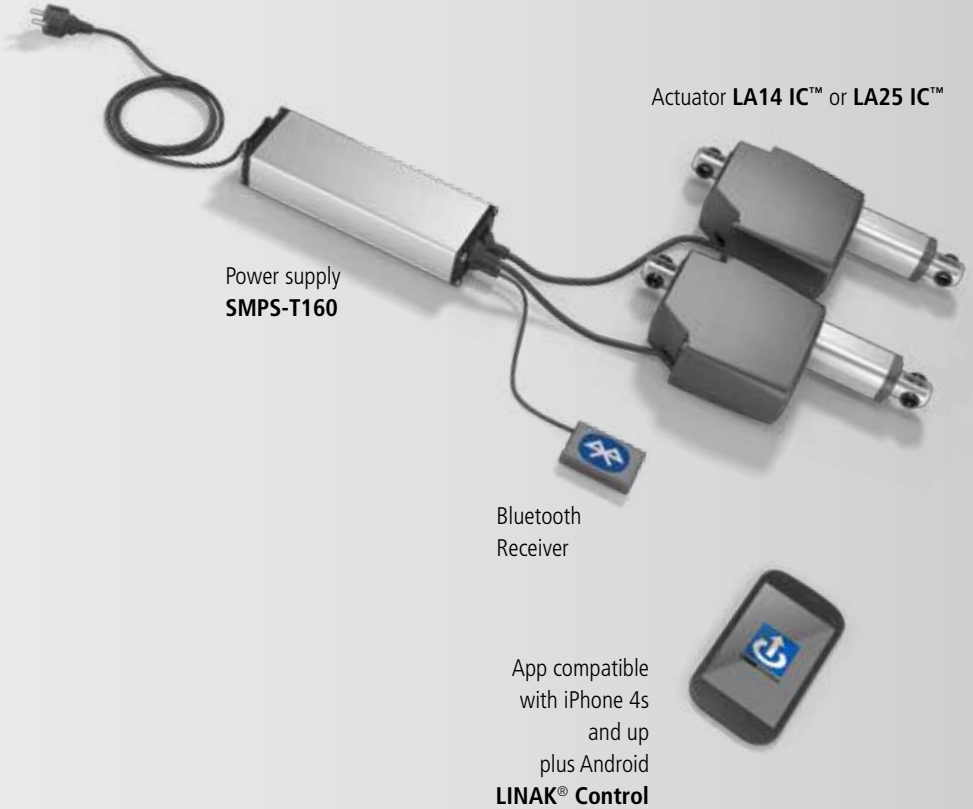
Bluetooth Receiver



App compatible with iPhone 4s and up plus Android
LINAK[®] Control

TECHLINE® system solution examples

Simultaneous run Solution

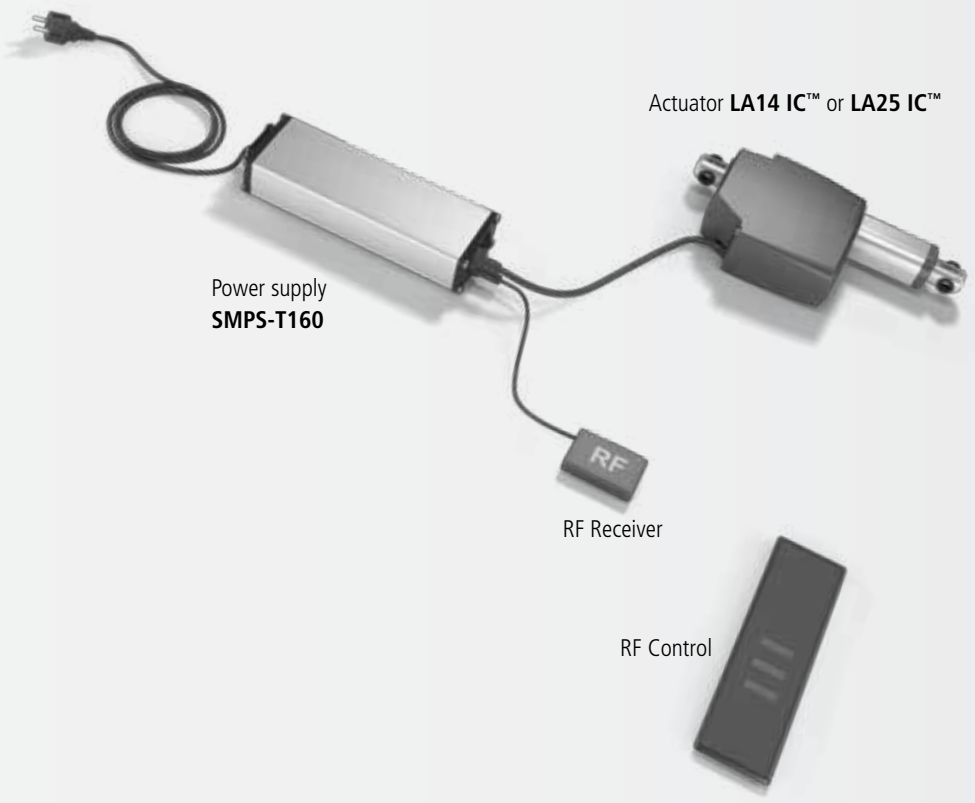


Compatible with Bluetooth, RF or other alternative controls.

The cable(s) between the SMPS-T160 and the actuators LA14 and LA25 can be either 300mm or 1500mm.

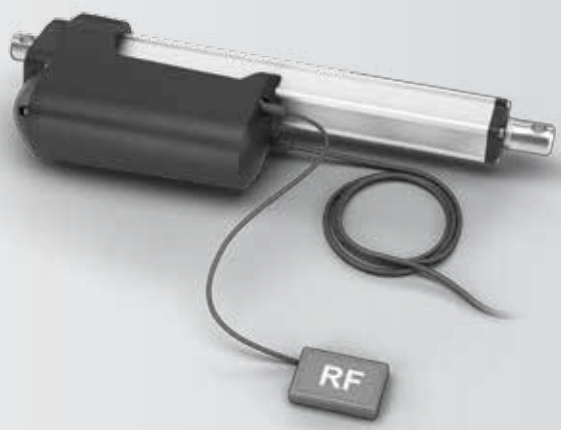
TECHLINE® system solution examples

RF Solution



TECHLINE® system solution examples

RF Solution



Actuator LA36 IC™ or LA37 IC™



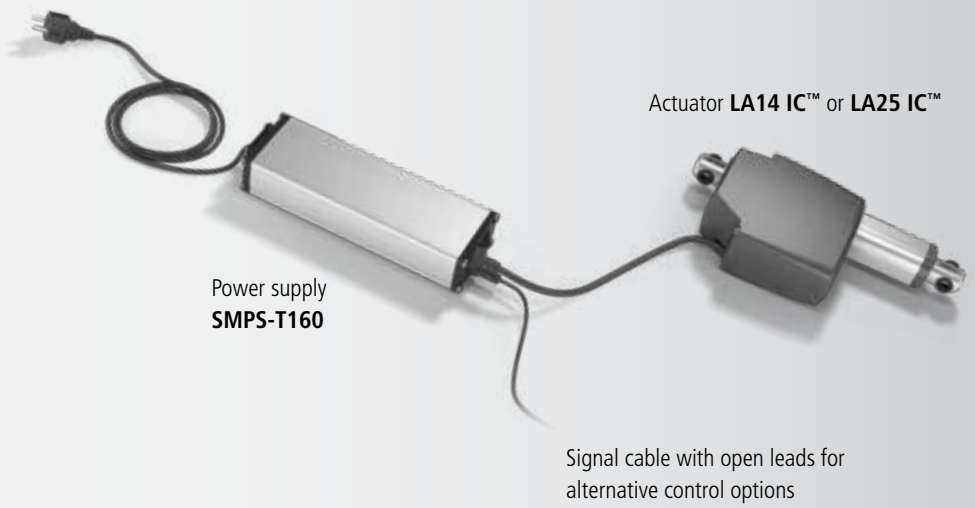
RF Receiver



RF Control

TECHLINE® system solution examples

Flying wire Solution



Power supply
SMPS-T160

Actuator **LA14 IC™** or **LA25 IC™**

Signal cable with open leads for
alternative control options

Actuator

Actuator LA37 - solid and powerful

Tough applications require equally tough actuator solutions. The actuator LA37 is specifically developed for heavy-duty applications in harsh environments, where there is a need for high lifting capacity and holding force. The LA37 offers the well-known LINAK quality, guaranteeing you a maintenance-free product with a long lifetime.



LA37 features:

- Max thrust up to 15,000 N
- Max speed up to 3.5 mm/sec
- Standard stroke 100-600 mm
- Protection class IP66 / IP69K
- Voltage 12 or 24V DC
- Heavy-duty aluminum housing for harsh conditions
- Integrated brake, high self-locking ability
- Hall sensors or potentiometer for relative or absolute feedback, regardless of the stroke length
- Built-in endstop
- Solid metal construction
- Hand crank for manual operation
- Salt spray and chemical tested
- High-pressure cleaning resistant
- **Available with IC™**



Actuator

Actuator LA36 - reliable and tough

The actuator LA36 is one of the most solid and powerful LINAK actuators, designed to operate under extreme conditions. The LA36 is a maintenance-free product with a long lifetime and a high IP degree. This high-quality actuator offers a very strong alternative to hydraulic solutions.



LA36 features:

- Max thrust up to 10,000 N
- Max speed up to 160 mm/sec
- Standard stroke 100-999 mm
- Heavy-duty aluminium housing for harsh conditions
- Protection class IP66 / IP69K
- Integrated brake, high self-locking ability
- Voltage 12, 24 or 36 V DC
- Hall sensors or potentiometer for relative or absolute feedback, regardless of the stroke length
- Endstops: slip clutch or built-in limit switches
- Solid metal construction
- Hand crank for manual operation
- Salt and chemical tested
- High-pressure cleaning resistant
- **Available with IC™**
- **Available with IECEx and ATEX certifications**



Actuator

Actuator LA25 - tough and compact

With its robust design, high IP degree and aluminium housing, the actuator LA25 is ideal for harsh environments where operation under extreme conditions is required. Furthermore, the compact dimensions of the LA25 make it applicable for confined spaces.



LA25 features:

- Max thrust up to 2,500 N
- Max speed 13 mm/sec
- Standard stroke 20-300 mm
- Protection class IP66 and IP69K
- Voltage 12 or 24 V DC
- Built-in electrical endstop
- **Available with IC™**
- **Available with IECEx and ATEX certifications**

IC INTEGRATED CONTROLLER



Actuator

Actuator LA14 - robust and reliable

The actuator LA14 is a very tough actuator with a high IP degree and aluminium housing, making it ideal for use in harsh and demanding environments.

The LA14 offers top quality in every detail and ensures reliable performance in temperatures ranging from -40° to +85 °C. With its small size the LA14 is well suited for applications that require short linear movements.



LA14 features:

- Max thrust up to 750 N
- Max speed up to 45 mm/sec
- Standard stroke 40-130 mm
- Protection class IP66 dynamic / IP69K static
- Stainless steel inner tube and piston rod
- Voltage 12 or 24 V DC
- Heavy-duty aluminium housing for harsh conditions
- Built-in limit switches
- Wide range of customised feedback options
- **Available with IC™**
- **Available with IECEx and ATEX certifications**

IC INTEGRATED CONTROLLER



Controls

HB40

The TECHLINE HB40 handset is intended to be used with the SMPS-T160. This sturdy compact unit is ergonomically designed and ideal for a vast range of applications.

HB40 features:

- Robust plastic housing
- Protection class up to IP66
- Compatible with:
LA14 IC™ via SMPS-T160, LA25 IC™ via SMPS-T160
LA36 IC™, LA37 IC™



DP

The DP has a compact design and can control up to three actuators independently.

DP features:

- Protection class IP30
- Compatible with:
LA14 IC™ via SMPS-T160
LA25 IC™ via SMPS-T160
LA36 IC™
LA37 IC™



Controls

EVO

EVO features:

- Dimensions: 125 x 40 x 10 mm
- Compatible with RF receiver



TXP

TXP features:

- Dimensions: 60 x 30 x 10 mm
- Compatible with RF receiver



Accessories

SMPS-T160

The SMPS-T160 is a powerful Switch Mode Power Supply typically used for outdoor applications within the Techline segments. SMPS-T160 is an eco-friendly solution due to a low standby power consumption compared to traditional transformer solutions. The universal input voltage makes the SMPS adaptable to the worldwide market irrespective of the input voltage.



SMPS-T160 features:

- Nominal input voltage (mains voltage):
100 V AC - 240 V AC +10/-15%
- Nominal input frequency: 50 Hz/60 Hz
- Typical standby power consumption:
Approx. 0.1 W
- Protection: IP66
- Compatible with:
LA14 IC™
LA25 IC™

Accessories

Bluetooth Receiver

The small and compact TECHLINE Bluetooth receiver enables easy control of the actuator with an iPhone 4S and up or an Android device. Its small form factor makes this device easy to implement into your application.



Bluetooth Receiver features:

- Power supply: 24V DC
- Operation current: 20 mA
- Range in open space: up to 12 meters
- Protection class: IP66
- Housing: ABS
- Cables: integrated
- Cable length: 150 mm
- Compatible with:
 - LA14 IC™ via SMPS-T160
 - LA25 IC™ via SMPS-T160
 - LA36 IC™
 - LA37 IC™

Accessories

RF Receiver

The small and compact RF receiver enables easy control of the actuator via remote control. Its small form factor makes this device easy to implement into your application.



RF Receiver features:

- Operating temperature: -20°C $+45^{\circ}\text{C}$
- Working frequency: 868.3 Mhz
- Range in open space: up to 80 meters
- Protection Class: IP66
- Housing material: polycarbonate
- Cables: integrated
- Cable length: 1500 mm
- Compatible with:
 - LA14 IC™ via SMPS-T160
 - LA25 IC™ via SMPS-T160
 - LA36 IC™
 - LA37 IC™

100% function tests

In each application, the actuator is just one component of many, but at TECHLINE® we fully appreciate that it is of utmost importance to you and your customers. Not a single actuator leaves LINAK® until it has undergone a 100% function test.

Depending on the actuator type, various tests have been carried through. Please consult your local LINAK office or take a look at the actuator data sheet in question to get a thorough test overview.

This is your guarantee that a solution based on LINAK TECHLINE electric actuator systems is a solution that will work reliably for years and years.

Electrical tests:

All electrical parts are tested i.e. power supply, power and signals cables, control signals etc. Electrical immunity is tested according to industrial standards i.e. for radio noise, electrical discharge and burst.*

(*) These tests do not apply to third party products!

Climatic tests:

In the climatic test the actuators are tested to operate in extreme temperatures as well as to endure rapid changes in temperature. In some tests, the actuator has to withstand going from a +100°C environment to -30°C repeatedly and still maintain full functionality.

Mechanical tests:

Vibration: The actuator must withstand continuous vibration in three directions.

Shock: The shock test puts the actuator through 3 shocks of up to 100 G in each of 6 directions.

Bump: The actuator receives bumps of up to 40 G in each of six directions several hundred times.

- EN/IEC 61000-6-4** - Generic standard emission industry
- EN/IEC 60204** - Electrical equipment of machinery
- EN 50121-3-2** - Railway applications - Rolling stock apparatus
- 94/25/EC** - Recreational crafts directive
- EN/ISO 13766** - Earth moving machinery
- EN/IEC 61000-6-2** - Generic standard immunity industry
- 2004/104/EC** - Automotive Directive
- EN/ISO 14982** - Agricultural and forestry machines
- EN/ISO 13309** - Construction machinery



- EN600068-2-1 (Ab)** - Cold test
- EN60068-2-2 (Bb)** - Dry heat:
- EN60068-2-14** - Change of temperature
- EN60068-2-30** - Damp heat
- EN60068-2-52** - Salt spray
- EN60529-IP66** - Degrees of protection
- BS7691/96 hours** - Chemicals



- EN60068-2-36 (Fdb)** - Vibration
- EN60068-2-29 (Eb)** - Bump
- EN60068-2-27 (Ea)** - Shock





Global presence

LINAK® has a well-developed sales and service organisation in Europe, America, Asia and Australia. Therefore, we can assist you and your customers locally, under the global sales concept idea: Be global, act local



INNOVATION



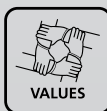
KNOWLEDGE



LEAN
WORLD-CLASS
PRODUCTION



PARTNERSHIP



VALUES

We add value to your products by offering innovative solutions, extensive knowledge, world-class production and global presence.



For further information about the **TECHLINE** product overview:
www.linak.com/techline

Terms of use

The user is responsible for determining the suitability of LINAK products for a specific application. LINAK takes great care in providing accurate and up-to-date information on its products. However, due to continuous development in order to improve its products, LINAK products are subject to frequent modifications and changes without prior notice. Therefore, LINAK cannot guarantee the correct and actual status of said information on its products. While LINAK uses its best efforts to fulfill orders, LINAK cannot, for the same reasons as mentioned above, guarantee the availability of any particular product. Therefore, LINAK reserves the right to discontinue the sale of any product displayed on its website or listed in its catalogues or other written material drawn up by LINAK.

All sales are subject to the Standard Terms of Sale and Delivery for LINAK. For a copy hereof, please contact LINAK.



WE IMPROVE YOUR LIFE