

Setup of Profibus for WCU

The GSD file for the M40 module is called LINA1167.gsd and can be downloaded on linak3p.com.

At delivery the node for Compact com M40 is set to 126. To change the node-number you need to access the profibus network and change the node-number with Simatic manager.

It is also possible to order the module from LINAK with a pre-set node number.

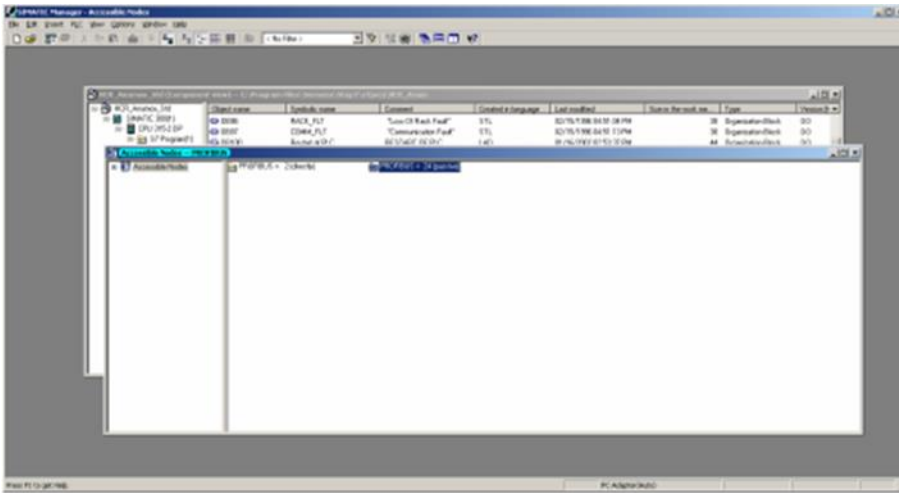
IMPORTANT: GSD is developed for Tiaportal, not STEP 7. If installed on an old step 7 system, please contact Siemens support.

Setup Siemens PLC

Search the module, the module is delivered as node no. 126.

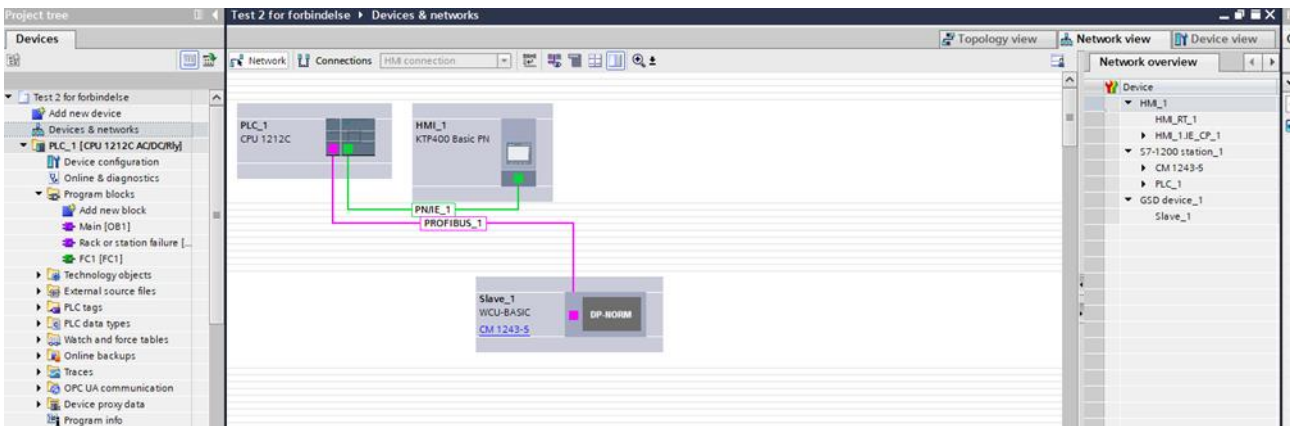


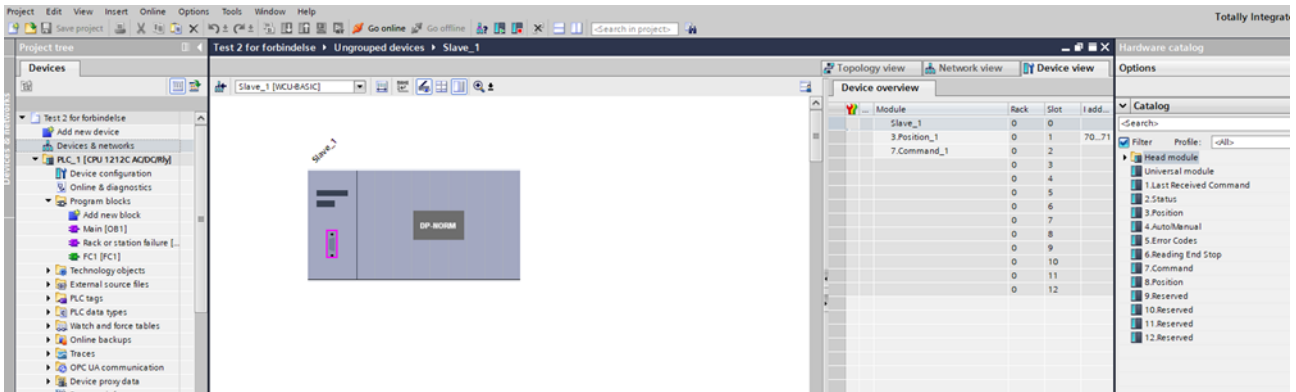
Change of the node-address with the help of SIMATIC Manager



GSD file in TIA portal

Remember to map all 12, otherwise it may cause problems!





Module	Rack	Slot	I address	Q address	Type	Article no.	Firmware
Slave_1	0	0			WCU-BASIC		Version 1.00
3.Position_1	0	1	70...71		3.Position		
7.Command_1	0	2		64...65	7.Command		
1.Last Received Command_1	0	3	68...69		1.Last Received Co...		
8.Position_1	0	4		66...67	8.Position		
4.Auto/Manual_1	0	5	72...73		4.Auto/Manual		
5.Error Codes_1	0	6	74...75		5.Error Codes		
	0	7					
	0	8					
	0	9					

Parameter list

Be aware that the bit order can be reversed, depending on the application

The user has three different commands to control the WCU-BUS control via the Bus module. It is possible to select two different parameter types:

- Mode 0, the parameters are limited.
- Mode 1, all parameters are available.

The memory area is read and written every second.

Command is written in parameter 2

- 0x54 – runs to position
- 0x5A – read parameter (can only be used in mode 1)
- 0x60 – write to parameter (area 15-66), only mode 1
- 0x90 – command reads parameter 6, limited parameter or full pack

Write the required position before start command is given.

Mode 0: Limited parameter

Write word area

Word	Byte	Description
1	1	Command = 54 drive to target (value written in word HEX), 5A reads status value, all parameters can be changed, cannot write until after reading, dangerous to play with. 60 = write value in parameter.
	2	
2	3	Position 0 ... 100
	4	
3	5	Mode 0 = limited parameter, 1 = all parameters.
	6	
4	7	Not in use.
	8	
5	9	Not in use.
	10	
6	11	Not in use.
	12	

Read word area (input)

Word	Byte	Description
1	1	Last received command
	2	
2	3	Status: Actuator run, 1 FW, 2 BW, 0 stop
	4	
3	5	Position 0 ... 100
	6	
4	7	Auto 0 / Manual 1
	8	
5	9	Error codes: 1 = overcurrent 2 = fault in power supply 3 = battery failure 4 = timeout 5 = overheating 6 = overvoltage 7 = error sp. See section troubleshooting.
	10	
6	11	Reading end stop: 0 = no limit 1 = atc. back 2 = act. forward
	12	