

# EMENTOOL

Programming tool for most Electromen  
motor controllers type TR-EM

## Instruction Manual



EmentoolLite



## Introduction

EMENTOOL comprises a programming device, TR-EM-328 and a software for EMENTOOL lite. When installed on a PC you can download a program (firmware) and parameters to most Electromen motor controllers, type TR-EM.

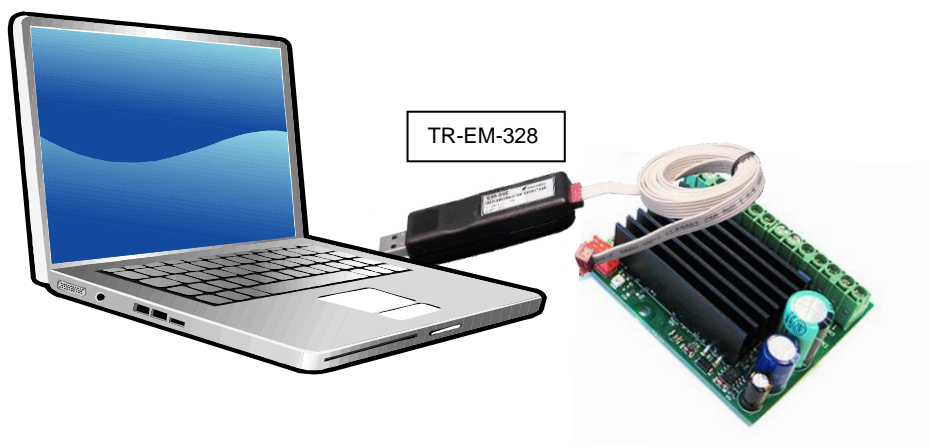
EMENTOOL Lite is a simple software used to set parameter values in the motor controller, and read and monitor current operating values.

## Table of contents

<b>You will need</b>	3
System requirements	3
<b>Installation of software</b>	4
<b>Ementool lite</b>	4
The Menu button	5
Tabs	5
<b>Parameters</b>	6
<b>Parameter-file (.PAR)</b>	7
<b>Monitor</b>	7
<b>Program</b>	8
<b>Parameter values</b>	9

## You will need

To set parameters in the motor controller, you need access to a PC with the EMENTOOL software installed, the EM-328 programming device (programming device incl. necessary cables). The programming device including software is available from LINAK Danmark A/S.  
Order no. **TR-EM-328**

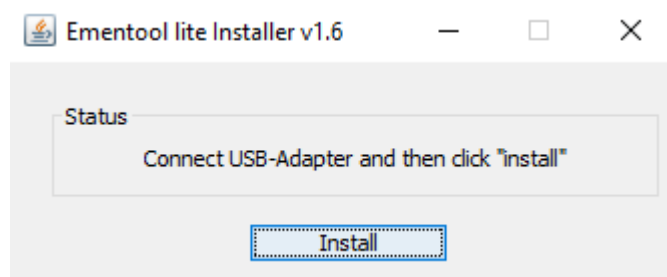


### **System requirements:**

To ensure that EMENTOOL can run on the PC in question, you need to have the latest version of Java installed. This can be downloaded for free on <http://www.java.com/en/>


## Installation of software

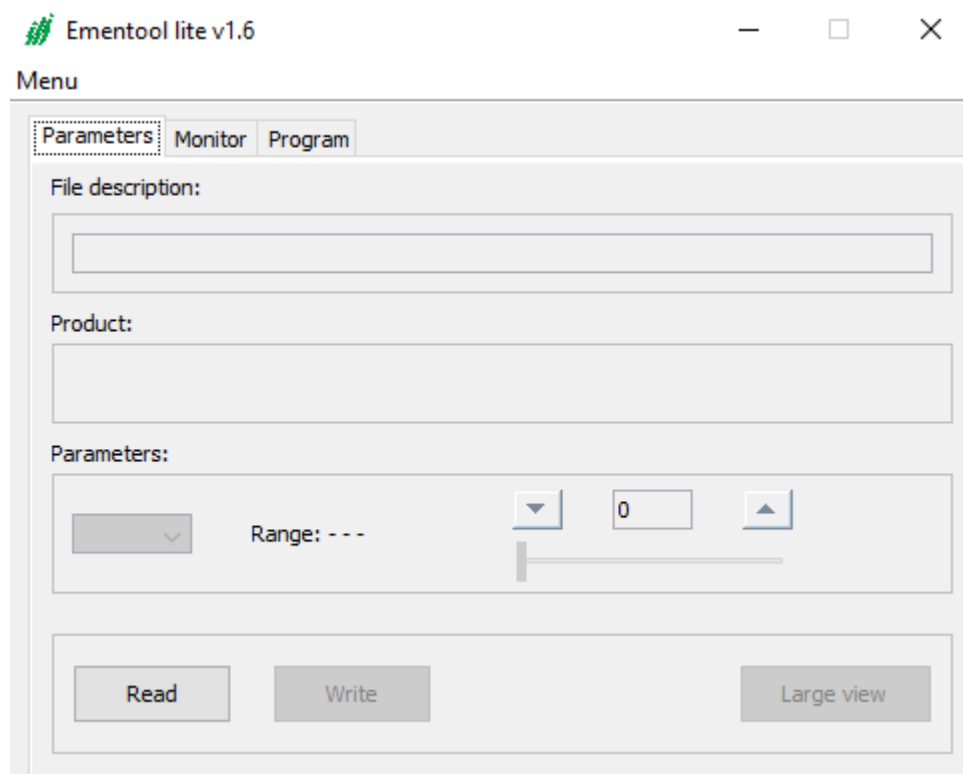
When you insert TR-EM-328 in your PC, you need to follow the instructions on how to install Ementool lite:



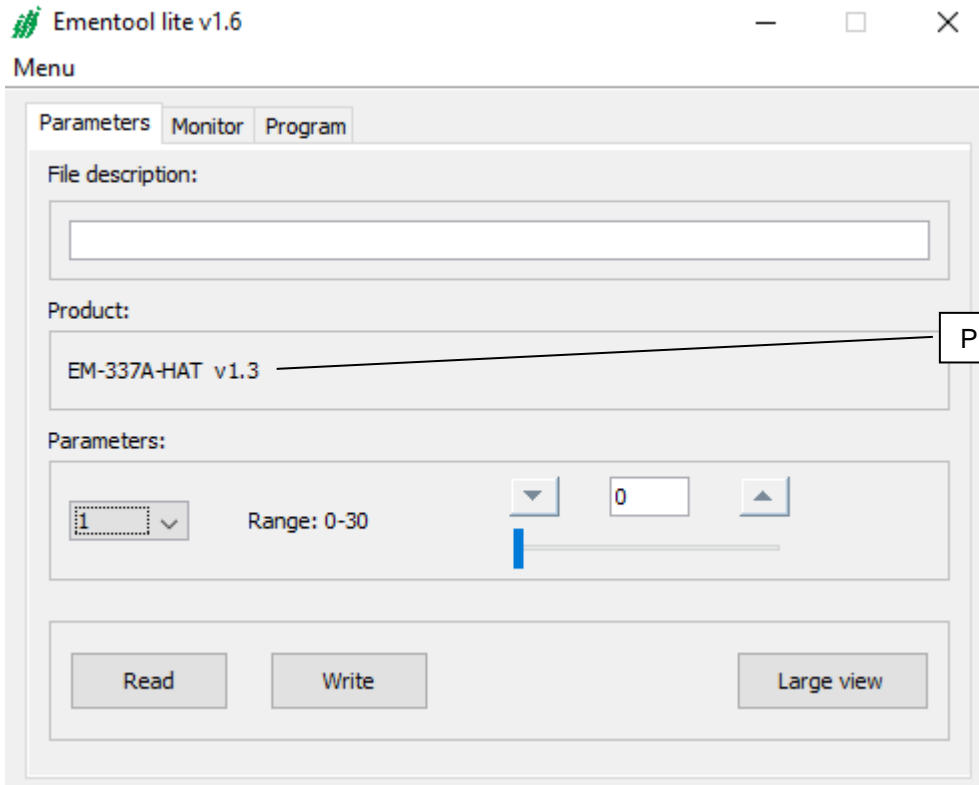
## Ementool lite

Ementool lite is used to set parameters, download firmware and monitor the system during operation.

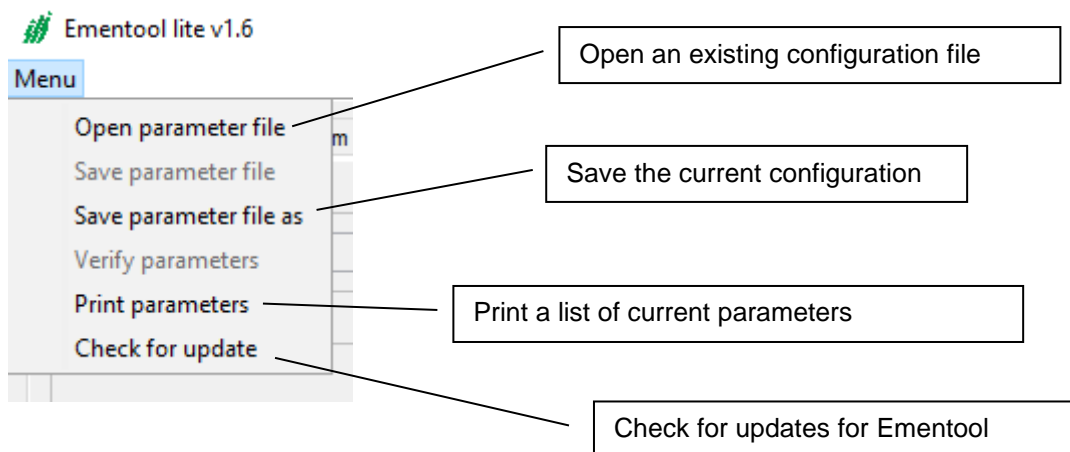
Start Ementool lite by clicking the icon  EmentoolLite



Connect a motor controller to the programming device. Click the “Read” button to read the motor controller configuration and data.



### The Menu button



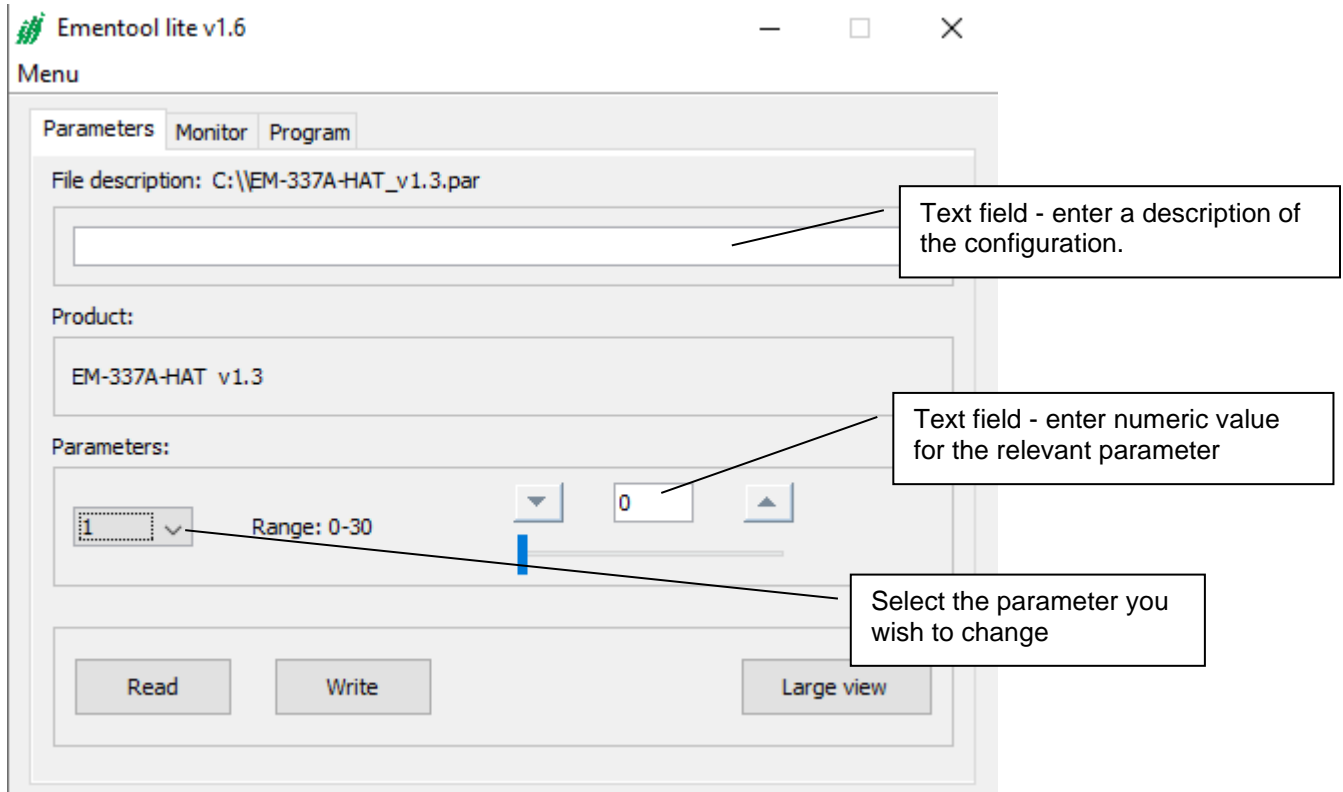
### Tabs

The functions in EMENTOOL lite are subdivided under tabs. Here you find the following:

- *Parameters*
- *Monitor*
- *Program*

## Parameters

The motor controller's parameters can be entered or changed from this tab.

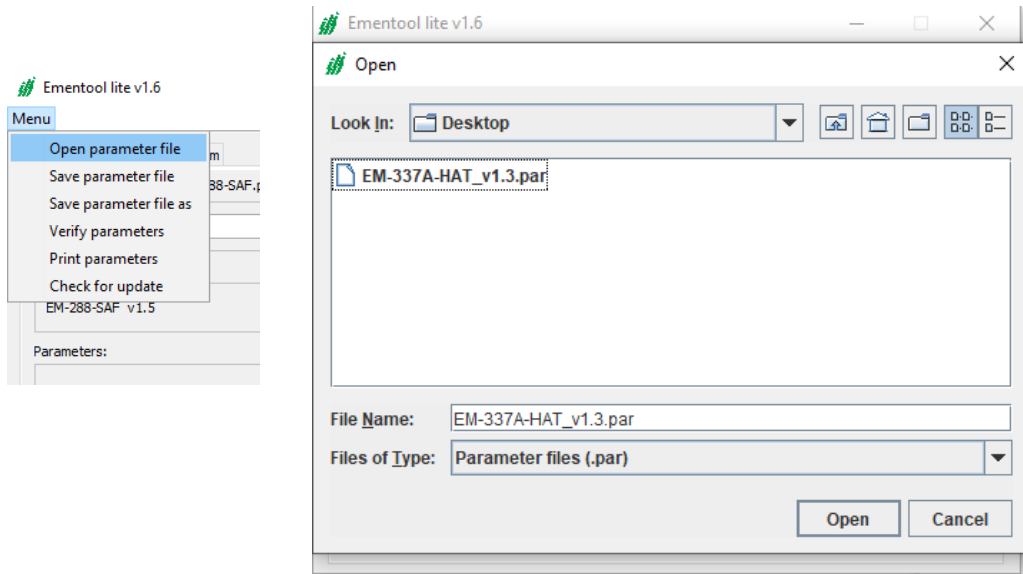


Click "Write" to transfer the changed values to the motor controller. The system is now ready for use.

You can find the recommended parameter values in the user manuals for the specific products on <http://www.linakthirdparty.com/>.

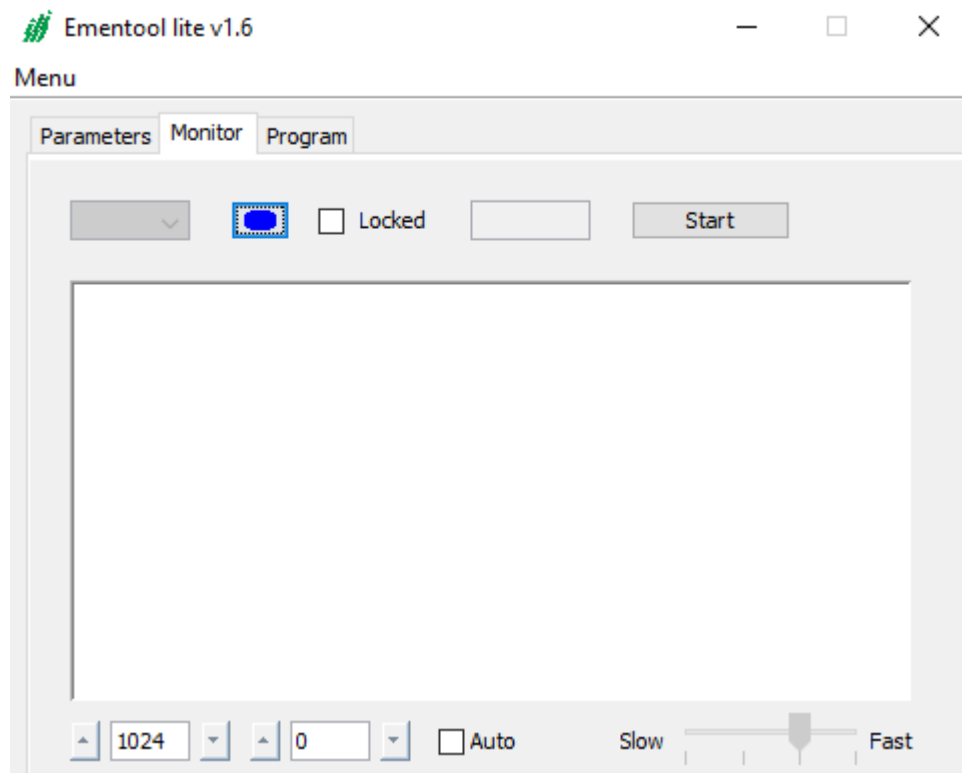
## Parameter-file (.PAR)

Parameters can easily be loaded into one or more motor controllers if a Parameter file (.par) has been created in an earlier stage by using "Save as" under the "Menu" tab.



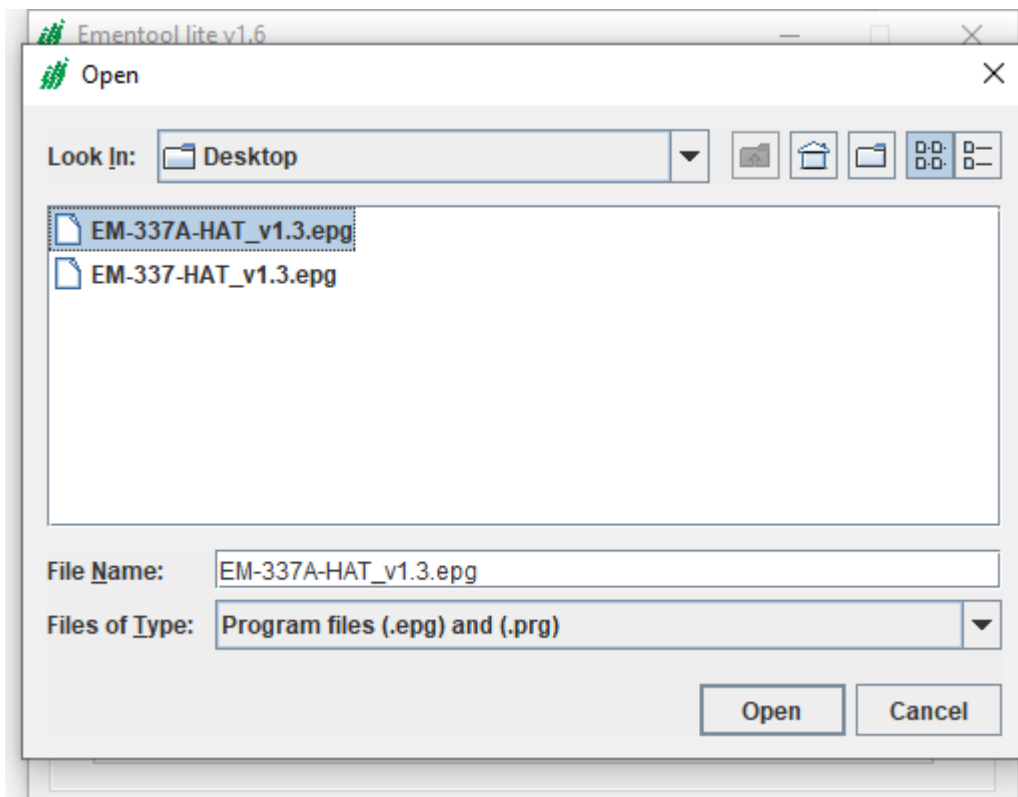
## Monitor

In the monitor tab there is a graphic presentation of the current LINAK system in operation. Very useful when troubleshooting the system.



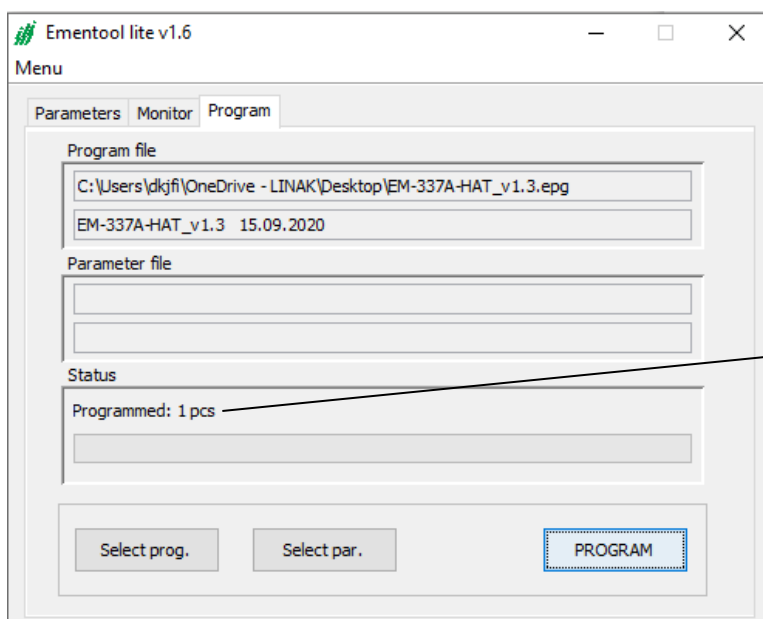
## Program

This function allows you to update the motor controller's firmware. On the button "Select prog." you choose from where you want to make the update.



Click "Open" to retrieve the file.

After this click on the "PROGRAM" button to download the new firmware to the motor controller. If you have several motor controllers – when you have completed programming the first one, simply connect the programming plug to the next motor controller and click "PROGRAM" again.



Status field shows the number of devices programmed.



## **Parameter values**

The parameter values for the different motor controllers can be found in the user manuals for the specific products on <http://www.linakthirdparty.com/>.