

How to pair a LINAK® Wireless LIFT50™



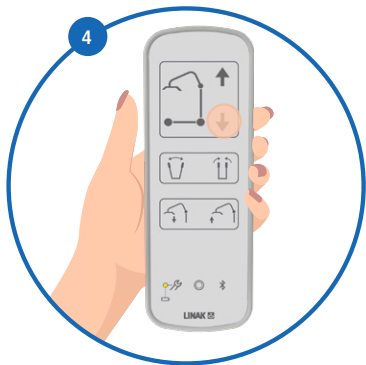
Move within two meters of the patient lift.



Enter Direct Pairing Mode by activating key 1 and magnet in 3 seconds.



Release key and magnet and move closer to the LIFT50™ until buzzer frequency change from slow to fast.



Confirm pairing by pushing key 1



Double confirmation beep - Pairing OK

How to pair