

Product introduction

ABL - Analogue input to Bluetooth® Low Energy

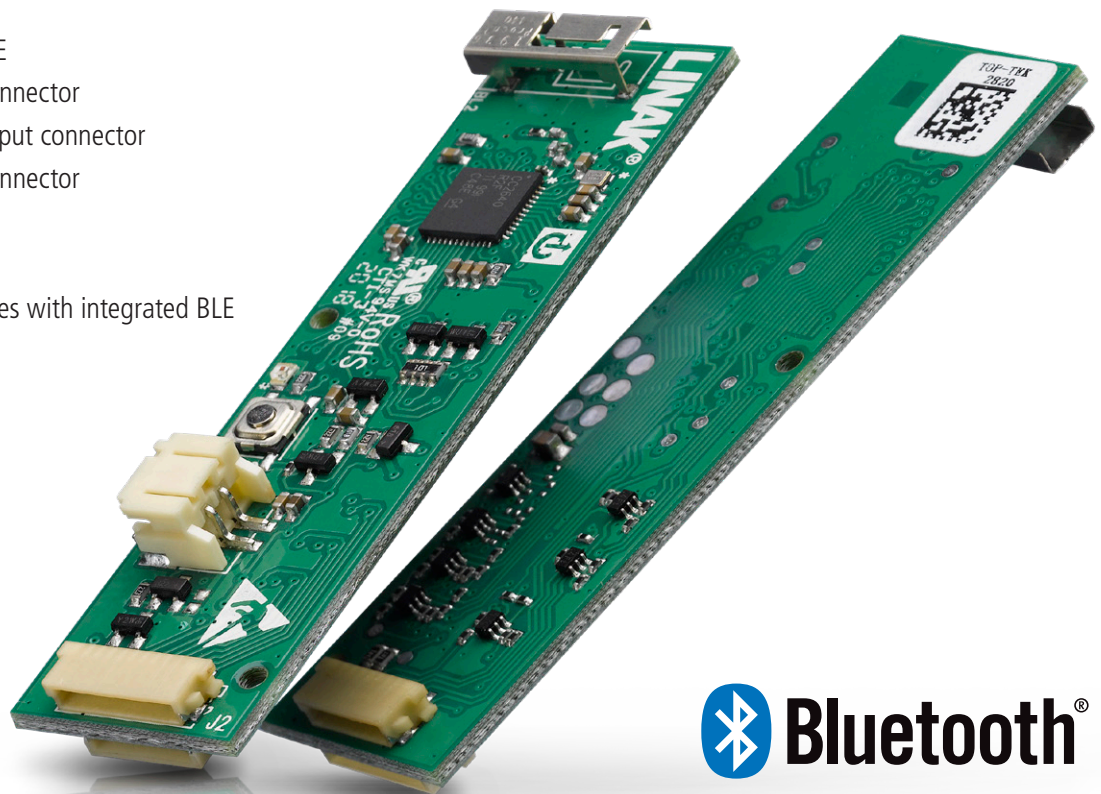
LINAK has developed a new printed circuit board (PCB) that converts analogue input to Bluetooth® Low Energy (BLE). The ABL allows for wireless communication, which makes cabling redundant. The ABL enables customers to create their own specific controls for their application. In addition, the ABL can be used in combination with third-party products, giving customers the freedom to adapt the solution according to their needs.

Specifications:

- Converts to BLE
- 10 pin input connector
- 8 pin input/output connector
- 2 pin supply connector

Compatibility:

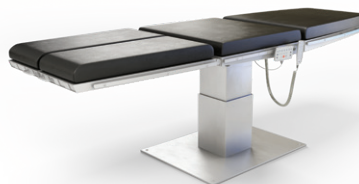
- CO control boxes with integrated BLE



Healthcare beds



Surgery tables



Couches



ABL

To learn more about the ABL, please visit our website
[LINAK.COM/PRODUCTS/CONTROLS/ABL/](https://www.linak.com/products/controls/abl/)

LINAK 
WE IMPROVE YOUR LIFE