



TD4 Quick guide

- Pairing devices and mechanical lowering

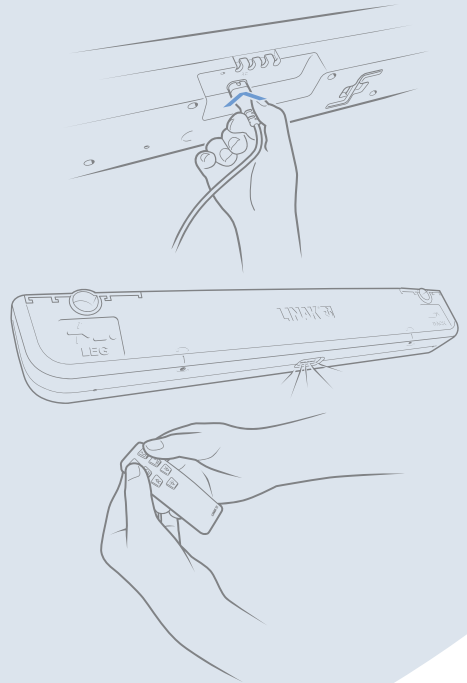
Via Bluetooth® wireless technology, it is possible to pair multiple devices to your bed motor, TWINDRIVE® TD4. See instructions below.

1: How to pair your device

Connect the TD4 to the mains. Now the TD4 is in pairing mode for 3 minutes. This is indicated by the flashing Under Bed Light.

Take your hand control and press the two upper buttons at the same time. The light will now flash in a long flash, indicating that the TD4 and the hand control have been paired. The TD4 remains in pairing mode and you can add more controls by repeating the procedure.

Please, be aware that there must be minimum 5 seconds between pairing the devices. To get the system out of pairing mode – simply press any button on an already paired device.



2: Pairing your smartphone or tablet

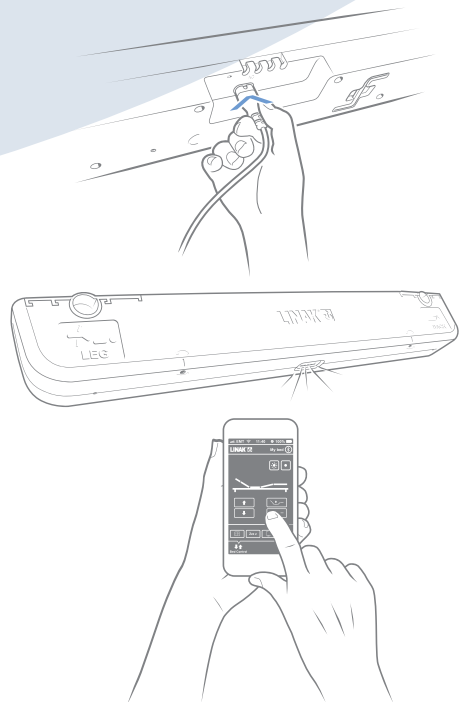
Start with finding and installing the app Bed Control from LINAK®.

Connect the TD4 to the mains. Now the TD4 is in pairing mode for 3 minutes. This is indicated by the flashing Under Bed Light.

Enable Bluetooth® on your smartphone or tablet. When you open the Bed Control app, a page opens where you can search for the bed. A list of previously connected TWINDRIVE devices as well as TWINDRIVE devices in pairing mode is displayed.

On the list, find the TD4 to which you want to connect and tap to connect. The TD4 is now paired with your smartphone or tablet and the app displays the page from which you can operate the bed.

The Bluetooth® pairing mode will stop as soon as the phone is connected. Thus, we recommend start pairing the hand control and thereafter the phone to avoid having to disconnect the power again.

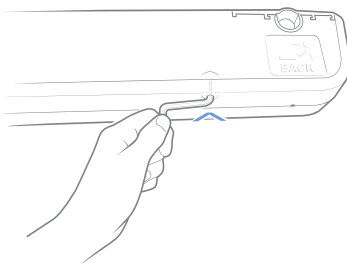
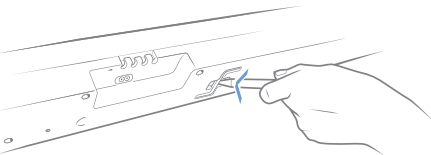
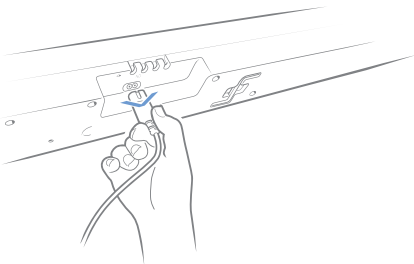
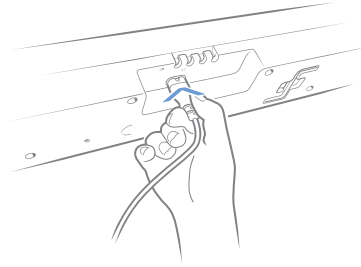
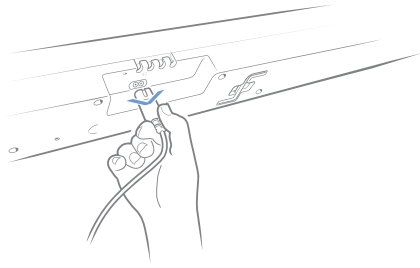


3: Pairing of devices later

If you wish to connect another hand control, a smartphone or a tablet to your TD4 later, you must disconnect from the mains, wait for one minute and plug it in again. Now the TD4 is in pairing mode again. Follow the instructions on the opposite page depending on which device you want to pair.

The TD4 goes into pairing mode every time the system is unplugged and reconnected again. To get the system out of pairing mode, you simply have to push a button on one of the devices/controls that are already paired with the TD4.

If you did not manage to pair a device with the TD4 within the 3 minutes it was in pairing mode, you need to disconnect it. After 1 minute, you can connect it again – it will now be in pairing mode for 3 minutes again.



Mechanical emergency lowering

Emergency lowering is meant for lowering the bed if a power failure occurs and the bed needs to be driven down into horizontal position.

Disconnect the TD4 from the mains. Take the hex key on the side of the TD4. Underneath the TD4 are two gaps for mechanical lowering – simply place the hex key in the gap, one end at a time, and turn the hex key in the direction the arrows indicate.

It is important that you turn the hex key in the direction indicated in the pictograms. If you turn it in the wrong direction, you can destroy the inner screw and thus make it impossible to lower the bed in an emergency.

Never use an electric screwdriver to lower the bed. It is important that you use only the supplied hex key.



Global presence

LINAK has a well-developed sales and service organisation in Europe, the Americas, Asia and Australia. Therefore, we can assist you and your customers locally, under the global sales concept idea: Be global, act local

TERMS OF USE

The user is responsible for determining the suitability of LINAK products for a specific application. LINAK takes great care in providing accurate and up-to-date information on its products. However, due to continuous development in order to improve its products, LINAK products are subject to frequent modifications and changes without prior notice. Therefore, LINAK cannot guarantee the correct and actual status of said information on its products. While LINAK uses its best efforts to fulfill orders, LINAK cannot, for the same reasons as mentioned above, guarantee the availability of any particular product. Therefore, LINAK reserves the right to discontinue the sale of any product displayed on its website or listed in its catalogues or other written material drawn up by LINAK.

All sales are subject to the Standard Terms of Sale and Delivery for LINAK. For a copy hereof, please contact LINAK.

LINAK has a world-class sales and service organisation.
Today we are present in 35 countries all over the world.
For further information, please visit our website: [LINAK.COM](https://www.linak.com)

LINAK® 
WE IMPROVE YOUR LIFE