

Height adjustable technical workstations

# Focus on trading desks



## Improve productivity and job satisfaction with ergonomic adjustability

Anyone concerned with ergonomics, job satisfaction and productivity should seriously consider the benefits provided by quick and easy electric height adjustment of trading desks.

Trading desks are used for applications in highly specialised workplaces such as banks and financial institutes. These jobs can be quite strenuous and therefore, it is of imperative importance that the employees feel comfortable at their desks. Electric adjustment of the desks means that the desks can be customised to the needs of the individual employee. Correct working height enables

the employees to obtain optimal working positions, which again leads to job satisfaction. For the workplace, it results in improved productivity and in the end, improved ergonomics results in less absence due to attrition and other work related ailments.

LINAK DESKLINE® electric actuator systems for trading desks are very powerful and yet they use less power than other adjustment solution. They are designed to manage the demands of trading desks. The easy, quiet and smooth operation fits perfectly in workplaces where trading desks are used, as adjusting the desks does not disturb colleagues.

LINAK linear actuators provide many years of maintenance-free service.

## LINAK DESKLINE® electric actuators benefits:

- Easy and quick individual adjustment in case of multiple shifts
- Optimal conditions for long work periods at one station
- User-friendly control
- Up to 16 legs in parallel

# Plug & Play

## LINAK DESKLINE® provides complete modular solutions

LINAK DESKLINE® can provide you with a modular system complete with lifting columns, programmable control boxes and controls for easy integration into your trading desk design.

**CBD6S;** a programmable control box capable of controlling up to 4 columns in parallel operation per control box. Settings such as preferred stroke length and speed are easily programmed using a simple software tool.

**DL4S;** a three part inline column with synchronous movement of the middle profile in a parallel system.

**DL6;** a three part lifting column with rectangular profiles with synchronous movement of the middle profile. A compact lifting unit with a small installation dimension and long stroke length.

**DL11;** a three part lifting column with round profiles. The robust construction with the largest profile downwards and reinforced motor housing gives a very compact and clean design.

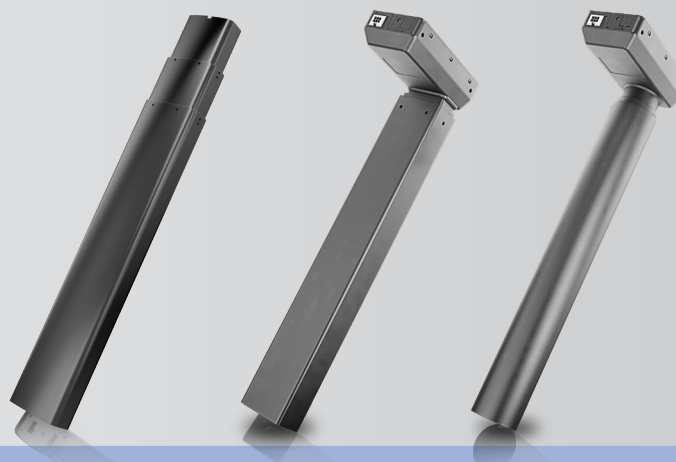
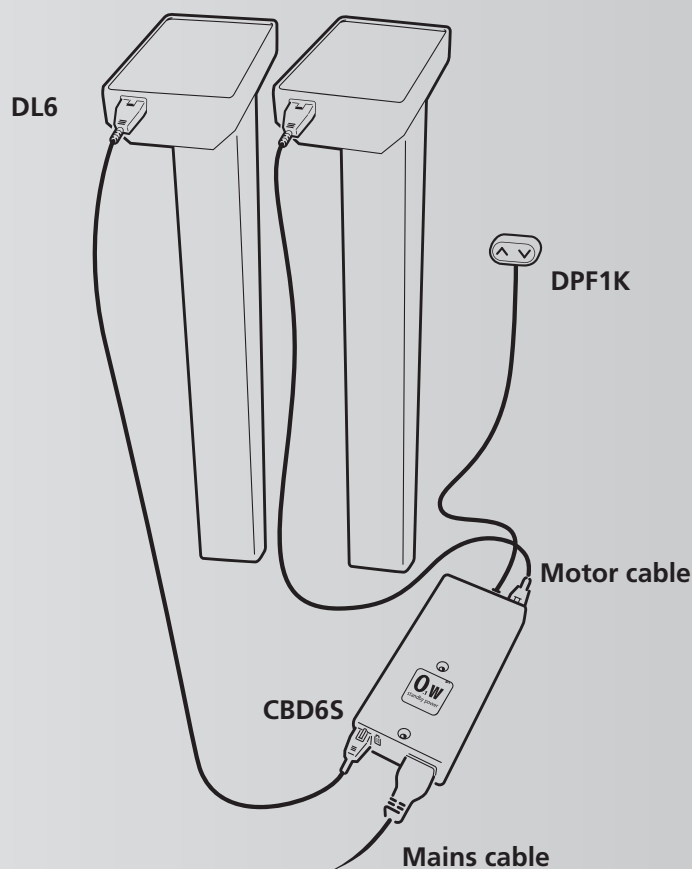
**DPF-series;** the hallmark of the DPF desk panel series is the modern design, which combines classic looks with intuitive, practical use.



For further information, please visit our websites:

[www.linak.com/deskline](http://www.linak.com/deskline)

Please scan the QR code for direct access to Technical Workstations



	DL4S	DL6	DL11
<b>Load, one column</b>	Max 70 kg	Max 120 kg	Max 80 kg
<b>Stroke length</b>	675 mm	650 mm	635 mm
<b>Built-in dimensions</b>	560 mm	560 mm	575 mm

### Terms of use

The user is responsible for determining the suitability of LINAK products for a specific application. LINAK takes great care in providing accurate and up-to-date information on its products. However, due to continuous development in order to improve its products, LINAK products are subject to frequent modifications and changes without prior notice. Therefore, LINAK cannot guarantee the correct and actual status of said information on its products. While LINAK uses its best efforts to fulfil orders, LINAK cannot, for the same reasons as mentioned above, guarantee the availability of any particular product. Therefore, LINAK reserves the right to discontinue the sale of any product displayed on its website or listed in its catalogues or other written material drawn up by LINAK.

All sales are subject to the Standard Terms of Sale and Delivery for LINAK. For a copy hereof, please contact LINAK.